



Super Globe Women

Wuxi (China)

Placement Match 7-8



IHF Women's Super Globe
2019

Match Team Statistics

Match No. 9

New York City 17 - 19 University of

Queensland

(7 - 10) (10 - 9)

4.8.2019. 14:00

Attendance:

Wuxi Sports Hall

Referees: Eunha Lee (KOR) / Gaeul Lee (KOR)

New York City

Players		Goals / shots										Attack					Def.			Penalties			TP		
#	Surname and name	S	Tot.	%	9m	6m	Wing	7m	FB	Brk.	LD	As.	PC	E7	E2	TF	St.	C7	Bik	YC	2m	R		B	
1	SORENSEN Elisabeth Ouus	S																							60:00
2	MICHAELSEN Signe Fangel	S	4/5	80	0/1	1/1			3/3			1				1	1								30:00
3	MOYON Sarah		0/1	0		0/1											1	1				2			30:36
4	HORTENSIUS Sem Robin	S	1/1	100					1/1							3	2								43:16
5	ENGELSTOFT Maja Storm		0/4	0	0/2					0/2			1			4									30:00
6	GAMTIS Louise		1/1	100						1/1		1				1	1	1				1			11:06
7	KESLEROVA Zuzana	S	1/5	20	1/2	0/2				0/1		1		3		3	2								32:51
8	MOSER Helen Laura	S	3/5	60	0/1	2/2			1/1	0/1				1		1	1	2	1	1	2				60:00
9	KHATTAB Jasmien	S	0/4	0	0/2		0/1			0/1								1							29:37
10	GUSTAFSSON Elsa Helena		2/5	40	2/4					0/1						1									36:19
11	BALANCHE Cecile Marie	S	1/7	14	0/3	1/3				0/1						2		2				2			46:37
12	SEVERIANO Daniela																								
13	NIELSEN Cecilie Maria		3/4	75					3/4																0:30
14	NIELSEN Maja Drud		1/9	11	1/8	0/1										2									9:08
	Team / bench																								
	UKUPNO		17/51	33	4/23	4/10	0/1	3/4	5/5	1/8	0/0	3	1	4	0	18	8	7	1	2	7	0	0		

Goalkeepers		Saves / shots									
#	Surname and name	Tot.	%	9m	6m	Wing	7m	FB	Brk.	LD	
1	SORENSEN Elisabeth Ouus	11/30	37	3/5	2/6		1/6	3/9	2/4		
12	SEVERIANO Daniela										
	TOTAL	11/30	37	3/5	2/6	0/0	1/6	3/9	2/4	0/0	

Coach: Pierre-Yves Coudrette

Number of attacks: 64, Efficiency: 27%, Average Duration: 28.3 seconds

Attack by type of defense

	Shots	9m	6m	Wing	TF	E7	E2
On def. 6-0	8/29	3/15	4/8	0/1	11	2	0
On def. 3-3	1/13	1/8	0/2	0/0	7	2	0
Fastbreak	5/5				0	0	0

Defense by type

	Total	9m	6m	Wing	Stl.	C7	2m
Def. 6-0	5/19	1/7	2/8	0/0	6	6	4
Def. 5-1	3/5	1/2	2/3	0/0	0	1	3
Def. 3-3	0/0	0/0	0/0	0/0	2	0	0
Fastbreak	6/12				0	0	0

Attack with goalkeeper out

	Attack				Reaction		
	Att.	Eff.	Shots	TF	FB	LD	Tot.
GK in	64	27%	17/51	18	6/12	0/0	6/12

GK out attack is counted if one part or whole attack was GK out

Defense with opponent goalkeeper out

	Attack				Reaction		
	Att.	Eff.	Shots	TF	FB	LD	Tot.
GK in	65	29%	19/43	24	5/5	0/0	5/5

Attack with player superiority/minority

	Attack				Reaction		
	Att.	Eff.	Shots	TF	FB	LD	Tot.
Superiority +1	1	100%	1/1	0	0/0	0/0	0/0
Normal	38	32%	12/30	11	3/6	0/0	3/6
Minority -1	16	6%	1/13	4	1/4	0/0	1/4

Player superiority counted at the end of attack (in case it changes during attack)

Defense with player superiority/minority

	Attack				Reaction		
	Att.	Eff.	Shots	TF	FB	LD	Tot.
Minority -1	16	25%	4/13	5	0/0	0/0	0/0
Normal	38	32%	12/25	15	5/5	0/0	5/5
Superiority +1	3	0%	0/0	1	0/0	0/0	0/0

Jersey number Tot. Total shooting 6m 6m (line) shooting 9m 9m shooting Wng Wing shooting FB Fastbreak sh. 7m 7m penalty sh.
 Brk. Breakthrough sh. LD Long distance sh. As. Assists PC Pass clear chance E7 Earned 7m pen. TF Technical faults St. Steals
 2m 2m punishments C7. Committed 7m E2 Earned 2m pun. YC. Yellow cards R/B Red/Blue cards Blk. Blocks S Starting Line-up



Super Globe Women

Wuxi (China)

Placement Match 7-8



IHF Women's Super Globe 2019

Match Team Statistics
Match No. 9

New York City 17 - 19 University of Queensland
(7 - 10) (10 - 9)

4.8.2019. 14:00
Attendance:
Wuxi Sports Hall

Referees: Eunha Lee (KOR) / Gaeul Lee (KOR)

Shot distribution by player

2 S. Michaelsen

2/2	1/1	1/1

3 S. Moyon

1 miss.

4 S. Hortensius

		1/1

5 M. Engelstoft

1 miss. 1 block

6 L. Gamtis

1/1		

7 Z. Keslerova

1/1		

1 block

8 H. Moser

		1/1

2/2
1 block

9 J. Khattab

1 block

10 E. Gustafsson

1/1		1/1

1 block

11 C. Balanche

1/1		

1 miss. 2 block

13 C. Nielsen

		2/2

14 M. Nielsen

1/1		

1 post 2 block

TOTAL

1/1		
1/1		2/2
7/7	1/1	4/4

1 post 3 miss. 9 block

Saves distribution goalkeepers

1 E. Sorensen

0/1		0/1
0/2		0/5
0/6	0/1	0/3

12 D. Severiano

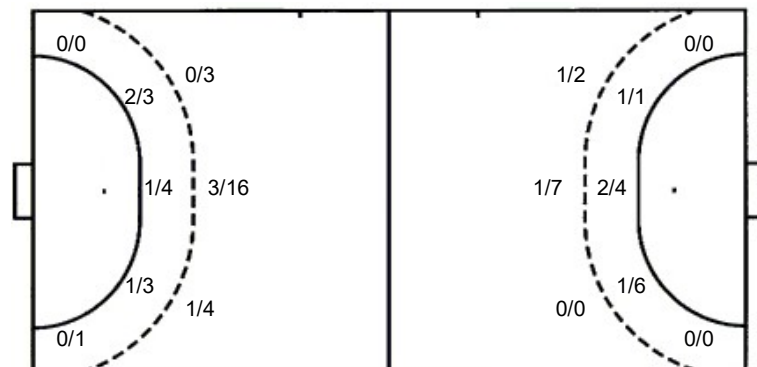
TOTAL

0/1		0/1
0/2		0/5
0/6	0/1	0/3

Shots by position

ATTACK

DEFENSE



7m penalties 3/4
Fastbreak 5/5
Breakthrough 1/8
Long dist. 0/0

7m penalties 5/7
Fastbreak 6/12
Breakthrough 2/4
Long dist. 0/0

Shooting statistics

Position	Goals	Sav.	Miss.	Post	Blk.	Total	%
Back (9m)	4	9	0	1	9	23	17
Line (6m)	4	5	1	0	0	10	40
Wing	0	1	0	0	0	1	0
7m penalties	3	1	0	0	0	4	75
Fastbreak	5	0	0	0	0	5	100
Breakthrough	1	5	2	0	0	8	13
Total	17	21	3	1	9	51	33

Jersey number Tot. Total shooting 6m 6m (line) shooting 9m 9m shooting Wng. Wing shooting FB Fastbreak sh. 7m 7m penalty sh.
Brk. Breakthrough sh. LD Long distance sh. As. Assists PC Pass clear chance E7 Earned 7m pen. TF Technical faults St. Steals
2m 2m punishments C7. Committed 7m E2 Earned 2m pun. YC. Yellow cards R/B Red/Blue cards Blk. Blocks S Starting Line-up



Super Globe Women

Wuxi (China)

Placement Match 7-8



IHF Women's Super Globe
2019

Match Team Statistics

Match No. 9

New York City 17 - 19 University of

Queensland

(7 - 10) (10 - 9)

4.8.2019. 14:00

Attendance:

Wuxi Sports Hall

Referees: Eunha Lee (KOR) / Gaeul Lee (KOR)

University of Queensland

Players		Goals / shots									Attack					Def.			Penalties			TP			
#	Surname and name	S	Tot.	%	9m	6m	Wing	7m	FB	Brk.	LD	As.	PC	E7	E2	TF	St.	C7	Blk	YC	2m		R	B	
1	HARBORT Jemima	S	0/1	0				0/1								1									59:21
2	KIRK Jane		4/6	67		1/3		3/3								1									12:42
3	MARIE-ANGELIQUE Sophia																2		4						29:35
7	SKJAERET Ane		2/2	100		1/1		1/1						2	1	2	1								11:44
9	LOFTUS Camille																								
10	VIANA Aline																								0:35
11	GUIGNARD Emma	S	0/1	0		0/1										2		1				1			28:28
13	TANIKAWA Shoko	S	1/4	25		1/2			0/2				1			1									40:36
14	MCACFEE Madeleine	S	4/10	40	2/5	0/1			2/3	0/1			2	1	2	2	5	1	2	1	1				60:00
15	GUSMAO Luiza	S	1/3	33	0/1	0/1			1/1																46:53
16	BOYD Rosalie		3/6	50	0/3	1/1				2/2		1		1	3	8	1		4						49:03
19	BERNER Kimberley	S	1/4	25		0/1		1/2		0/1			1			3	1	1		1		1			14:45
22	COOPER Heather		3/6	50					3/6						1	1	1	2							19:24
24	DOBLOUG Julie	S													1										46:54
25	ESTGFAELLER Nora																								
93	ROSENGREEN Simone																								
	Team / bench																								
	UKUPNO		19/43	44	2/9	4/11	0/0	5/7	6/12	2/4	0/0	3	3	7	7	24	8	4	9	2	1	1	0		

Goalkeepers		Saves / shots								
#	Surname and name	Tot.	%	9m	6m	Wing	7m	FB	Brk.	LD
1	HARBORT Jemima	21/38	55	9/13	5/9	1/1	1/4	0/5	5/6	
25	ESTGFAELLER Nora									
	TOTAL	21/38	55	9/13	5/9	1/1	1/4	3/5	5/6	0/0

Coach: Caleb Gahan

Number of attacks: 65, Efficiency: 29%, Average Duration: 27.5 seconds

Attack by type of defense

	Shots	9m	6m	Wing	TF	E7	E2
On def. 6-0	5/19	1/7	2/8	0/0	16	6	4
On def. 5-1	3/5	1/2	2/3	0/0	8	1	3
Fastbreak	6/12				0	0	0

Defense by type

	Total	9m	6m	Wing	Stl.	C7	2m
Def. 6-0	8/29	3/15	4/8	0/1	6	2	0
Def. 5-1	0/0	0/0	0/0	0/0	2	0	1
Def. 3-3	1/13	1/8	0/2	0/0	0	2	0
Fastbreak	5/5				0	0	0

Attack with goalkeeper out

	Attack				Reaction		
	Att.	Eff.	Shots	TF	FB	LD	Tot.
GK in	65	29%	19/43	24	5/5	0/0	5/5

GK out attack is counted if one part or whole attack was GK out

Defense with opponent goalkeeper out

	Attack				Reaction		
	Att.	Eff.	Shots	TF	FB	LD	Tot.
GK in	64	27%	17/51	18	6/12	0/0	6/12

Attack with player superiority/minority

	Attack				Reaction		
	Att.	Eff.	Shots	TF	FB	LD	Tot.
Superiority +1	16	25%	4/13	5	0/0	0/0	0/0
Normal	38	32%	12/25	15	5/5	0/0	5/5
Minority -1	3	0%	0/0	1	0/0	0/0	0/0

Player superiority counted at the end of attack (in case it changes during attack)

Defense with player superiority/minority

	Attack				Reaction		
	Att.	Eff.	Shots	TF	FB	LD	Tot.
Minority -1	1	100%	1/1	0	0/0	0/0	0/0
Normal	38	32%	12/30	11	3/6	0/0	3/6
Superiority +1	16	6%	1/13	4	1/4	0/0	1/4

Jersey number Tot. Total shooting 6m 6m (line) shooting 9m 9m shooting Wng Wing shooting FB Fastbreak sh. 7m 7m penalty sh.
 Brk. Breakthrough sh. LD Long distance sh. As. Assists PC Pass clear chance E7 Earned 7m pen. TF Technical faults St. Steals
 2m 2m punishments C7. Committed 7m E2 Earned 2m pun. YC. Yellow cards R/B Red/Blue cards Blk. Blocks S Starting Line-up



Super Globe Women

Wuxi (China)

Placement Match 7-8



IHF Women's Super Globe
2019

Match Team Statistics

Match No. 9

New York City 17 - 19 University of Queensland

(7 - 10) (10 - 9)

4.8.2019. 14:00

Attendance:

Wuxi Sports Hall

Referees: Eunha Lee (KOR) / Gaeul Lee (KOR)

Shot distribution by player

2 J. Kirk

1/1		1/1
1/1		1/1

2 post

3 S.

Marie-Angelique

7 A. Skjaeret

2/2		

9 C. Loftus

10 A. Viana

11 E. Guignard

13 S. Tanikawa

1/1		

2 post

14 M. McAfee

2/2		2/2

2 miss.

15 L. Gusmao

1/1		

2 post

16 R. Boyd

		1/1
		2/2

1 block

19 K. Berner

1/1		

2 post

22 H. Cooper

		2/2
	1/1	

2 post

24 J. Dobloug

93 S. Rosengreen

TOTAL

1/1		1/1
2/2		5/5
6/6	1/1	3/3

10 post 2 miss. 1 block

Saves distribution goalkeepers

1 J. Harbort

0/1		
0/1		0/2
0/7	0/1	0/4

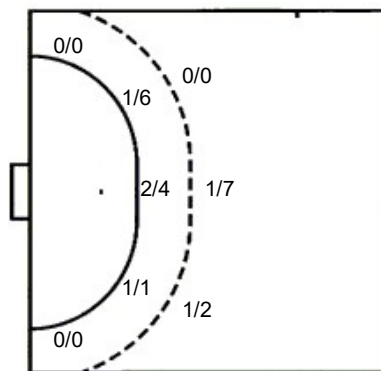
25 N. Estgfaeller

TOTAL

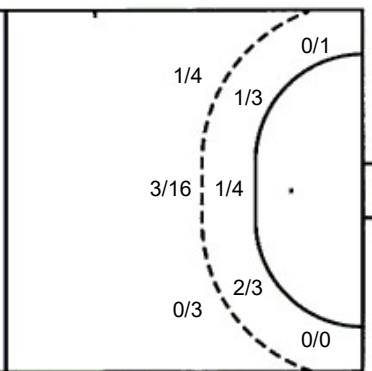
0/1		
0/1		0/2
0/7	0/1	0/4

Shots by position

ATTACK



DEFENSE



7m penalties 5/7
Fastbreak 6/12
Breakthrough 2/4
Long dist. 0/0

7m penalties 3/4
Fastbreak 5/5
Breakthrough 1/8
Long dist. 0/0

Shooting statistics

Position	Goals	Sav.	Miss.	Post	Blk.	Total	%
Back (9m)	2	3	2	1	1	9	22
Line (6m)	4	2	0	5	0	11	36
Wing	0	0	0	0	0	0	0
7m penalties	5	1	0	1	0	7	71
Fastbreak	6	3	0	3	0	12	50
Breakthrough	2	2	0	0	0	4	50
Total	19	11	2	10	1	43	44

Jersey number **Tot.** Total shooting **6m** 6m (line) shooting **9m** 9m shooting **Wng.** Wing shooting **FB** Fastbreak sh. **7m** 7m penalty sh.
Brk. Breakthrough sh. **LD** Long distance sh. **As.** Assists **PC** Pass clear chance **E7** Earned 7m pen. **TF** Technical faults **St.** Steals
2m 2m punishments **C7.** Committed 7m **E2** Earned 2m pun. **YC.** Yellow cards **R/B** Red/Blue cards **Blk.** Blocks **S** Starting Line-up



Super Globe Women

Wuxi (China)

Placement Match 7-8



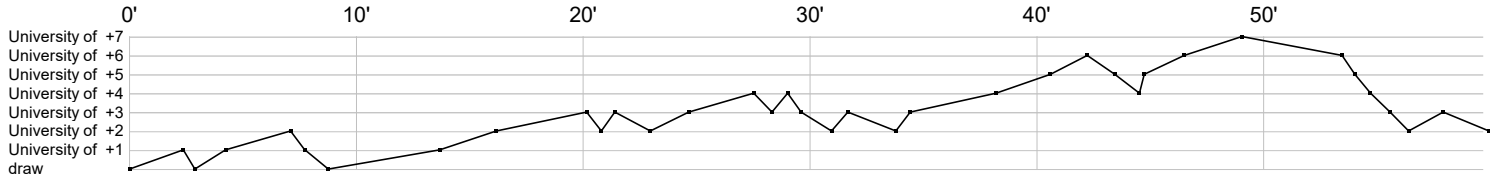
IHF Women's Super Globe
2019

Match Team Statistics
Match No. 9

New York City 17 - 19 University of Queensland
(7 - 10) (10 - 9)

4.8.2019. 14:00
Attendance:
Wuxi Sports Hall

Referees: Eunha Lee (KOR) / Gaeul Lee (KOR)



New York City

1 Sorensen E	r	r	r	ss	r	r	r	r	s	r	r	r	sr	r	s	r	r	r	s	s	s	r	s
2 Michaelsen																							
3 Moyon S																							
4 Hortensius																							
5 Engelstoft																							
6 Gamtis L																							
7 Keslerova																							
8 Moser H																							
9 Khattab J																							
10 Gustafsson																							
11 Balanche C																							
12 Severiano																							
13 Nielsen C																							
14 Nielsen M																							

University of Queensland

1 Harbort J	s	r	s	ss	r	r	s	s	s	s	r	f	r	s	s	s	r	r	r	s	r	t	s	s	sr	r	s	ss	r	r	r	r	s		
2 Kirk J																																			
3 Marie-Angel																																			
7 Skjaeret A																																			
9 Loftus C																																			
10 Viana A																																			
11 Guignard E																																			
13 Tanikawa S																																			
14 McAfee M																																			
15 Gusmao L																																			
16 Boyd R																																			
19 Berner K																																			
22 Cooper H																																			
24 Dobloug J																																			
25 Estgfaeller																																			
93 Rosengreen																																			

In game	g Goal scored	f Missed shot	a Assist	t Technical faults	b Steal
2 2min suspension	e Earned 7m	c Committed 7m	y Yellow card	r Red Card	k Blue card
i Earned 2min.	x Block	4 4min suspension	p Pass for clear chance	s Saved shot	r Received goal