



Super Globe Women

Wuxi (China)

Semifinal



Match Team Statistics
Match No. 8

Agosto Luanda 20 - 17 A.A. UnC Concord
(10 - 7) (10 - 10)

2.8.2019. 20:45
Attendance:
Wuxi Sports Hall

Referees: Ignacio Garcia (ESP) / Andreu Marin (ESP)

Agosto Luanda

Players		Goals / shots									Attack					Def.			Penalties			TP			
#	Surname and name	S	Tot.	%	9m	6m	Wing	7m	FB	Brk.	LD	As.	PC	E7	E2	TF	St.	C7	Blk	YC	2m		R	B	
3	DA SILVA Iracelma	S																1				1			4:34
4	PAULO Helena Gilda Simao	S	3/7	43	0/4	1/1		2/2				5	1			3									40:01
6	MACHADO Juliana		1/4	25	1/3					0/1		1		1	1	1									45:47
8	JOAO Ruth Francisco		1/1	100					1/1										1						9:56
9	BERNARDO Natalia	S																							6:12
10	SILVA Vilma	S	1/1	100			1/1										2								25:55
11	KASSOMA Albertina	S	1/2	50		1/2										2		1	5	1					35:01
12	LIOVERAS Eleneidys	S																							56:03
15	VENANCIO Liliana		3/4	75		3/4								3	1				6		2				47:04
16	SOUSA Helena																								0:16
18	JOSE Claudete	S	1/2	50			1/2																		53:03
19	DOMBAXI Wuta		2/5	40	1/1	0/1	1/2		0/1					2		2	1						1		14:11
20	PINTO Amalia																								
23	MWASESA Cristiane		6/9	67	2/4	1/1		2/3		1/1						2	1	1	1			1			32:04
31	SANTOS Janete		1/2	50			1/1		0/1								1								31:44
90	GUILAO Isabel		0/4	0	0/4							3													18:09
	Team / bench																								
	UKUPNO		20/41	49	4/16	6/9	4/6	4/5	1/3	1/2	0/0	9	1	6	2	10	5	3	13	1	5	0	0		

Goalkeepers		Saves / shots								
#	Surname and name	Tot.	%	9m	6m	Wing	7m	FB	Brk.	LD
12	LIOVERAS Eleneidys	10/26	38	6/13	0/3	1/2	0/3	2/3	1/1	0/1
16	SOUSA Helena	0/1	0				0/1			
20	PINTO Amalia									
	TOTAL	10/27	37	6/13	0/3	1/2	0/4	2/3	1/1	0/1

Coach: Morten Soubak

Number of attacks: 46, Efficiency: 43%, Average Duration: 31.7 seconds

Attack by type of defense

	Shots	9m	6m	Wing	TF	E7	E2
On def. 6-0	15/33	4/16	6/9	4/6	10	4	1
On def. 5-1	0/0	0/0	0/0	0/0	0	2	1
Fastbreak	1/3				0	0	0

Defense by type

	Total	9m	6m	Wing	Stl.	C7	2m
Def. 6-0	5/17	3/14	1/1	1/2	4	1	2
Def. 5-1	6/19	4/16	2/2	0/0	1	2	3
Fastbreak	1/3				0	0	0

Attack with goalkeeper out

	Attack				Reaction		
	Att.	Eff.	Shots	TF	FB	LD	Tot.
GK out (7 on 6)	1	0%	0/1	0	0/0	0/0	0/0
GK out pl. minority	2	0%	0/1	1	0/0	0/0	0/0
GK in	43	47%	20/39	9	1/3	1/1	2/4

GK out attack is counted if one part or whole attack was GK out

Attack with player superiority/minority

	Attack				Reaction		
	Att.	Eff.	Shots	TF	FB	LD	Tot.
Superiority +1	3	67%	2/4	0	0/0	0/0	0/0
Normal	31	45%	14/27	6	1/3	0/0	1/3
Minority -1	8	38%	3/9	1	0/0	1/1	1/1
Minority -2	1	0%	0/0	1	0/0	0/0	0/0

Player superiority counted at the end of attack (in case it changes during attack)

Defense with opponent goalkeeper out

	Attack				Reaction		
	Att.	Eff.	Shots	TF	FB	LD	Tot.
GK in	46	37%	17/44	9	1/3	0/0	1/3

Defense with player superiority/minority

	Attack				Reaction		
	Att.	Eff.	Shots	TF	FB	LD	Tot.
Minority -2	1	100%	1/1	0	0/0	0/0	0/0
Minority -1	8	50%	4/7	2	0/0	0/0	0/0
Normal	30	33%	10/29	6	1/2	0/0	1/2
Superiority +1	4	0%	0/5	0	0/1	0/0	0/1

Jersey number Tot. Total shooting 6m 6m (line) shooting 9m 9m shooting Wng Wing shooting FB Fastbreak sh. 7m 7m penalty sh.
Brk. Breakthrough sh. LD Long distance sh. As. Assists PC Pass clear chance E7 Earned 7m pen. TF Technical faults St. Steals
2m 2m punishments C7. Committed 7m E2 Earned 2m pun. YC. Yellow cards R/B Red/Blue cards Blk. Blocks S Starting Line-up



Super Globe Women

Wuxi (China)

Semifinal



IHF Women's Super Globe
2019

Match Team Statistics

Match No. 8

Agosto Luanda 20 - 17 A.A. UnC Concord

(10 - 7) (10 - 10)

2.8.2019. 20:45

Attendance:

Wuxi Sports Hall

Referees: Ignacio Garcia (ESP) / Andreu Marin (ESP)

Shot distribution by player

3 I. Da Silva

4 H. Paulo

1/1		
1/1		1/1

1 post 2 block

6 J. Machado

		1/1

2 miss.

8 R. Joao

		1/1

9 N. Bernardo

10 V. Silva

		1/1

11 A. Kassoma

1/1		

15 L. Venancio

		1/1
1/1		1/1

1 miss.

18 C. Jose

	1/1	

19 W. Dombaxi

1/1		
1/1		

23 C. Mwasesa

1/1		
		1/1
3/3		1/1

31 J. Santos

1/1		

90 I. Guilao

1 post 2 miss. 1 block

TOTAL

2/2	1/1	1/1
3/3		3/3
6/6		4/4

2 post 5 miss. 3 block

Saves distribution goalkeepers

12 E. Lioveras

0/1		
0/2	0/1	0/1
0/4	0/3	0/3

16 H. Sousa

0/1		

20 A. Pinto

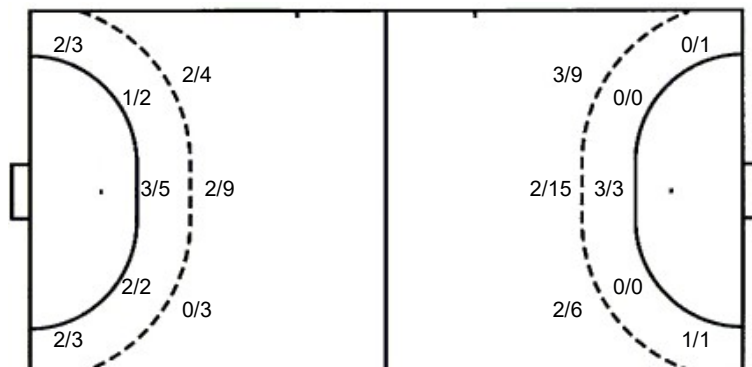
TOTAL

0/1		
0/2	0/1	0/1
0/5	0/3	0/3

Shots by position

ATTACK

DEFENSE



7m penalties 4/5

Fastbreak 1/3

Breakthrough 1/2

Long dist. 0/0

7m penalties 4/4

Fastbreak 1/3

Breakthrough 0/1

Long dist. 1/1

Shooting statistics

Position	Goals	Sav.	Miss.	Post	Blk.	Total	%
Back (9m)	4	3	4	2	3	16	25
Line (6m)	6	2	1	0	0	9	67
Wing	4	2	0	0	0	6	67
7m penalties	4	1	0	0	0	5	80
Fastbreak	1	2	0	0	0	3	33
Breakthrough	1	1	0	0	0	2	50
Total	20	11	5	2	3	41	49

Jersey number Tot. Total shooting 6m 6m (line) shooting 9m 9m shooting Wng. Wing shooting FB Fastbreak sh. 7m 7m penalty sh.
 Brk. Breakthrough sh. LD Long distance sh. As. Assists PC Pass clear chance E7 Earned 7m pen. TF Technical faults St. Steals
 2m 2m punishments C7. Committed 7m E2 Earned 2m pun. YC. Yellow cards R/B Red/Blue cards Blk. Blocks S Starting Line-up



Super Globe Women

Wuxi (China)

Semifinal



IHF Women's Super Globe
2019

Match Team Statistics

Agosto Luanda 20 - 17 A.A. UnC Concord

2.8.2019. 20:45

Match No. 8

(10 - 7) (10 - 10)

Attendance:

Wuxi Sports Hall

Referees: Ignacio Garcia (ESP) / Andreu Marin (ESP)

A.A. UnC Concordia

Players		Goals / shots										Attack					Def.			Penalties			TP		
#	Surname and name	S	Tot.	%	9m	6m	Wing	7m	FB	Brk.	LD	As.	PC	E7	E2	TF	St.	C7	Blk	YC	2m	R	B		
1	VERONA ROTTA Luciane																								0:12
2	KELLER MORCINECK Nadyne	S	1/1	100		1/1								1	1		1	1		1					52:04
3	MARIELLE ENGEL Eduarda																								
4	OLIVEIRA SOUSA Daise	S	3/10	30	2/9	1/1						1				1									56:29
6	M.C.F. CANATA MORINGO Sabrina	S	6/7	86	0/1	1/1		4/4	1/1							1	1	1		1	1				59:45
7	ISABEL BIEGER Aline																								
10	BELLA D CARMO MONTEIRO Barbarah																								
13	ALVES CARNEIRO Talita	S	3/10	30	3/10									1				1		1					31:10
14	R. GONCALVES PEREIRA Agda	S	1/4	25	1/3					0/1					1	2		1							46:45
15	AGUIAR CAMELO BORBA Ana Luiza		2/5	40	1/2		1/1		0/2							1									38:37
19	SOUZA CAETANO BUCK Amanda											1			1	1		1							2:34
20	LIMA DIAS Maite	S	1/1	100							1/1														59:24
22	SOTHE Francieli																								
73	PEREIRA COSTA Juliane																								3:37
88	B. DO NASCIMENTO FELIX Jamily		0/2	0	0/1		0/1																		18:29
99	MARTINS SCHNEIDER Tauani	S	0/4	0	0/4								1	1	2	1	2		1	2		1			50:54
	Team / bench																								
	UKUPNO		17/44	39	7/30	3/3	1/2	4/4	1/3	0/1	1/1	3	2	4	3	9	2	5	3	2	2	0	0		

Goalkeepers		Saves / shots									
#	Surname and name	Tot.	%	9m	6m	Wing	7m	FB	Brk.	LD	
1	VERONA ROTTA Luciane	0/1	0				0/1				
20	LIMA DIAS Maite	11/30	37	3/7	2/8	2/6	1/4	2/3	1/2		
	TOTAL	11/31	35	3/7	2/8	2/6	1/5	4/3	1/2	0/0	

Coach: Alexandre Trevisan Schneider

Number of attacks: 46, Efficiency: 37%, Average Duration: 46.6 seconds

Attack by type of defense

	Shots	9m	6m	Wing	TF	E7	E2
On def. 6-0	5/17	3/14	1/1	1/2	4	2	1
On def. 5-1	6/19	4/16	2/2	0/0	5	2	2
Fastbreak	1/3				0	0	0

Defense by type

	Total	9m	6m	Wing	Stl.	C7	2m
Def. 6-0	15/33	4/16	6/9	4/6	1	5	1
Def. 5-1	0/0	0/0	0/0	0/0	1	0	1
Fastbreak	1/3				0	0	0

Attack with goalkeeper out

	Attack				Reaction		
	Att.	Eff.	Shots	TF	FB	LD	Tot.
GK in	46	37%	17/44	9	1/3	0/0	1/3

GK out attack is counted if one part or whole attack was GK out

Defense with opponent goalkeeper out

	Attack				Reaction		
	Att.	Eff.	Shots	TF	FB	LD	Tot.
GK out (7 on 6)	1	0%	0/1	0	0/0	0/0	0/0
GK in	43	47%	20/39	9	1/3	1/1	2/4

Attack with player superiority/minority

	Attack				Reaction		
	Att.	Eff.	Shots	TF	FB	LD	Tot.
Superiority +2	1	100%	1/1	0	0/0	0/0	0/0
Superiority +1	8	50%	4/7	2	0/0	0/0	0/0
Normal	30	33%	10/29	6	1/2	0/0	1/2
Minority -1	4	0%	0/5	0	0/1	0/0	0/1

Player superiority counted at the end of attack (in case it changes during attack)

Defense with player superiority/minority

	Attack				Reaction		
	Att.	Eff.	Shots	TF	FB	LD	Tot.
Minority -1	3	67%	2/4	0	0/0	0/0	0/0
Normal	31	45%	14/27	6	1/3	0/0	1/3
Superiority +1	8	38%	3/9	1	0/0	1/1	1/1
Superiority +2	1	0%	0/0	1	0/0	0/0	0/0

Jersey number Tot. Total shooting 6m 6m (line) shooting 9m 9m shooting Wng Wing shooting FB Fastbreak sh. 7m 7m penalty sh.
 Brk. Breakthrough sh. LD Long distance sh. As. Assists PC Pass clear chance E7 Earned 7m pen. TF Technical faults St. Steals
 2m 2m punishments C7. Committed 7m E2 Earned 2m pun. YC. Yellow cards R/B Red/Blue cards Blk. Blocks S Starting Line-up



Super Globe Women

Wuxi (China)

Semifinal



IHF Women's Super Globe
2019

Match Team Statistics

Match No. 8

Agosto Luanda 20 - 17 A.A. UnC Concord

(10 - 7) (10 - 10)

2.8.2019. 20:45

Attendance:

Wuxi Sports Hall

Referees: Ignacio Garcia (ESP) / Andreu Marin (ESP)

Shot distribution by player

**2 N. Keller
Morcineck**

		1/1

3 E. Marielle Engel

**4 D. Oliveira
Sousa**

		1/1
		2/2

2 post 2 block

**6 S. M.C.F. Canata
Moringo**

3/3	2/2	

1 block 1/1 lob

7 A. Isabel Bieger

**10 B. Bella D
carmo Monteiro**

**13 T. Alves
Carneiro**

	1/1	
	1/1	
	1/1	

1 miss. 4 block

**14 A. R.
Goncalves Pereira**

	1/1	

2 block

**15 A. Aguiar
Camelo Borba**

1/1		
1/1		

1 block

**19 A. Souza
Caetano Buck**

22 F. Sothe

**73 J. Pereira
Costa**

**88 J. B. do
Nascimento Felix**

1 block

**99 T. Martins
Schneider**

1 miss. 2 block

TOTAL

1/1		
2/2		1/1
5/5	3/3	3/3

2 post 2 miss. 13 block
1/1 lob

Saves distribution goalkeepers

1 L. Verona Rotta

		0/1

20 M. Lima Dias

0/2	0/1	0/1
0/3		0/2
0/6		0/4

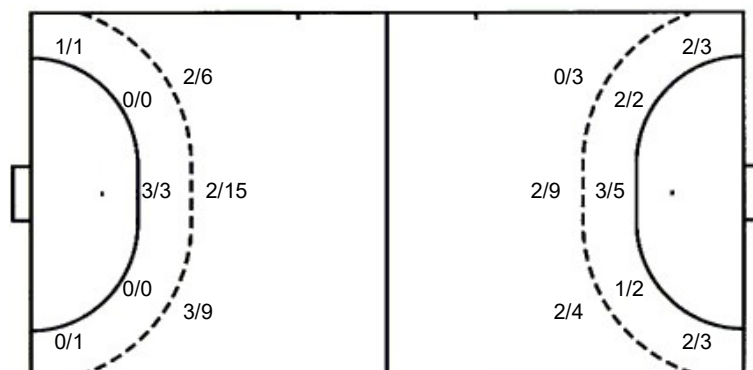
TOTAL

0/2	0/1	0/1
0/3		0/3
0/6		0/4

Shots by position

ATTACK

DEFENSE



7m penalties 4/4
Fastbreak 1/3
Breakthrough 0/1
Long dist. 1/1

7m penalties 4/5
Fastbreak 1/3
Breakthrough 1/2
Long dist. 0/0

Shooting statistics

Position	Goals	Sav.	Miss.	Post	Blk.	Total	%
Back (9m)	7	6	2	2	13	30	23
Line (6m)	3	0	0	0	0	3	100
Wing	1	1	0	0	0	2	50
7m penalties	4	0	0	0	0	4	100
Fastbreak	1	2	0	0	0	3	33
Breakthrough	0	1	0	0	0	1	0
Total	16	10	2	2	13	43	37

Jersey number Tot. Total shooting 6m 6m (line) shooting 9m 9m shooting Wng. Wing shooting FB Fastbreak sh. 7m 7m penalty sh.
 Brk. Breakthrough sh. LD Long distance sh. As. Assists PC Pass clear chance E7 Earned 7m pen. TF Technical faults St. Steals
 2m 2m punishments C7. Committed 7m E2 Earned 2m pun. YC. Yellow cards R/B Red/Blue cards Blk. Blocks S Starting Line-up

