



# Super Globe Women

## Wuxi (China)

### Placement Match 5-8



IHF Women's Super Globe  
2019

Match Team Statistics

Match No. 6

## Jiangsu Team 33 - 17 University of

## Queensland

(14 - 7) (19 - 10)

2.8.2019. 16:15

Attendance:

Wuxi Sports Hall

Referees: Viktoriia Alpaidze (RUS) / Tatiana Berzkina (RUS)

### Jiangsu Team

Players		Goals / shots									Attack					Def.			Penalties			TP				
#	Surname and name	S	Tot.	%	9m	6m	Wing	7m	FB	Brk.	LD	As.	PC	E7	E2	TF	St.	C7	Bik	YC	2m		R	B		
1	SONG Chenxi	S	0/1	0							0/1					1									29:15	
5	WANG Dan		8/10	80	1/1		1/1	2/2	2/3	2/3				1	1	1	1								18:10	
6	FENG Yang	S	2/6	33			1/3		1/2	0/1							1								35:59	
7	SUN Jiao	S	1/1	100					1/1				1	1			2	1	1			1			37:44	
10	WANG Keke	S	1/6	17	1/6							2		1	1		1						1		32:33	
11	YU Yuanyuan	S	4/5	80	1/1		1/1	1/1	1/2							1		1		1					49:25	
13	HUANG Huiying		2/4	50	0/2				1/1	1/1		2	1			1	1		1					1	16:47	
14	XU Hanshu																								9:09	
15	XIE Mingyue		4/6	67			1/3		3/3					1		2									17:30	
17	WU Meiqi		1/5	20	1/5							1					1								24:29	
18	DAI Xiaoyu	S	3/5	60	2/3				1/2			2			1	2	4		1	1	1				36:35	
19	JIAO Ya		2/3	67				1/1	1/2								1								11:20	
21	GAO Yuanyuan		3/6	50	3/6										1	1									30:31	
22	PENG Ruyu		0/1	0							0/1	1													29:35	
23	WANG Shuhui	S	1/3	33	1/2			0/1				1		1					2						18:42	
28	LIANG Rong		1/1	100				1/1						1	1		1								22:16	
	Team / bench																									
	UKUPNO		33/63	52	10/26	0/0	4/8	5/6	11/16	3/5	0/2	9	2	6	5	9	13	2	5	2	4	0	0			

Goalkeepers		Saves / shots								
#	Surname and name	Tot.	%	9m	6m	Wing	7m	FB	Brk.	LD
1	SONG Chenxi	9/16	56	3/4	0/1	5/8			1/3	
22	PENG Ruyu	10/20	50	2/3	0/5	3/4	0/1	2/2	3/5	
	TOTAL	19/36	53	5/7	0/6	8/12	0/1	2/2	4/8	0/0

Coach: Jiashu Kim

Number of attacks: 67, Efficiency: 49%, Average Duration: 18.5 seconds

### Attack by type of defense

	Shots	9m	6m	Wing	TF	E7	E2
On def. 6-0	17/39	10/26	0/0	4/8	9	6	5
Fastbreak	11/16				0	0	0

### Attack with goalkeeper out

	Attack				Reaction		
	Att.	Eff.	Shots	TF	FB	LD	Tot.
GK in	67	49%	33/63	9	0/2	0/1	0/3

GK out attack is counted if one part or whole attack was GK out

### Attack with player superiority/minority

	Attack				Reaction		
	Att.	Eff.	Shots	TF	FB	LD	Tot.
Superiority +1	12	50%	6/13	1	0/0	0/0	0/0
Normal	40	40%	16/35	7	0/2	0/0	0/2
Minority -1	9	78%	7/10	0	0/0	0/1	0/1

Player superiority counted at the end of attack (in case it changes during attack)

### Defense by type

	Total	9m	6m	Wing	Stl.	C7	2m
Def. 6-0	7/23	1/9	4/4	2/7	13	0	1
Def. 3-2-1	8/19	1/6	2/2	2/7	0	2	3
Def. 3-3	1/1	0/0	0/0	0/0	0	0	0
Fastbreak	0/2				0	0	0

### Defense with opponent goalkeeper out

	Attack				Reaction		
	Att.	Eff.	Shots	TF	FB	LD	Tot.
GK out (7 on 6)	1	0%	0/0	1	0/0	0/0	0/0
GK in	65	26%	17/47	27	11/16	0/2	11/18

### Defense with player superiority/minority

	Attack				Reaction		
	Att.	Eff.	Shots	TF	FB	LD	Tot.
Minority -1	9	33%	3/8	2	1/1	0/0	1/1
Normal	42	26%	11/28	20	8/11	0/1	8/12
Superiority +1	10	20%	2/10	2	1/2	0/1	1/3

# Jersey number Tot. Total shooting 6m 6m (line) shooting 9m 9m shooting Wng Wing shooting FB Fastbreak sh. 7m 7m penalty sh.  
 Brk. Breakthrough sh. LD Long distance sh. As. Assists PC Pass clear chance E7 Earned 7m pen. TF Technical faults St. Steals  
 2m 2m punishments C7. Committed 7m E2 Earned 2m pun. YC. Yellow cards R/B Red/Blue cards Blk. Blocks S Starting Line-up



# Super Globe Women

Wuxi (China)

Placement Match 5-8



IHF Women's Super Globe  
2019

Match Team Statistics

Match No. 6

## Jiangsu Team 33 - 17 University of Queensland

(14 - 7) (19 - 10)

2.8.2019. 16:15

Attendance:

Wuxi Sports Hall

Referees: Viktoriia Alpaidze (RUS) / Tatiana Berzkina (RUS)

### Shot distribution by player

**5 D. Wang**

		2/2
1/1	1/1	4/4

1 post

**6 Y. Feng**

1/1		
1/1		

1 post

**7 J. Sun**

		1/1

**10 K. Wang**

1/1		

2 miss. 1 block

**11 Y. Yu**

1/1		2/2

1/1 lob

**13 H. Huang**

		2/2

1 block

**14 H. Xu**


**15 M. Xie**

1/1		1/1
1/1	1/1	

**17 M. Wu**

		1/1

2 block

**18 X. Dai**

1/1		
2/2		

1 block

**19 Y. Jiao**

1/1		1/1

**21 Y. Gao**

2/2		1/1

1 post 2 block

**23 S. Wang**

		1/1

**28 R. Liang**

1/1		

### TOTAL

1/1		1/1
3/3		2/2
10/10	2/2	13/13

3 post 2 miss. 7 block 1/1 lob

### Saves distribution goalkeepers

**1 C. Song**

0/1		
		0/1
0/5		

**22 R. Peng**

0/1		
0/1		0/1
0/1	0/1	0/5

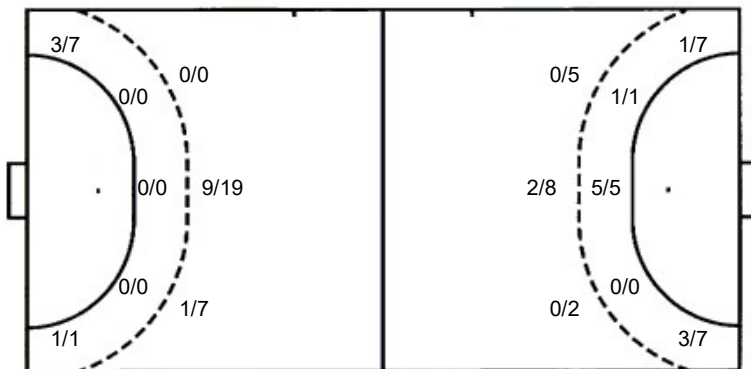
**TOTAL**

0/2		
0/1		0/2
0/6	0/1	0/5

### Shots by position

ATTACK

DEFENSE



7m penalties 5/6

Fastbreak 11/16

Breakthrough 3/5

Long dist. 0/2

7m penalties 1/2

Fastbreak 0/2

Breakthrough 4/8

Long dist. 0/1

### Shooting statistics

Position	Goals	Sav.	Miss.	Post	Blk.	Total	%
Back (9m)	10	6	2	1	7	26	38
Line (6m)	0	0	0	0	0	0	0
Wing	4	3	0	1	0	8	50
7m penalties	5	1	0	0	0	6	83
Fastbreak	11	4	0	1	0	16	69
Breakthrough	3	2	0	0	0	5	60
<b>Total</b>	<b>33</b>	<b>16</b>	<b>2</b>	<b>3</b>	<b>7</b>	<b>61</b>	<b>54</b>

# Jersey number Tot. Total shooting 6m 6m (line) shooting 9m 9m shooting Wng. Wing shooting FB Fastbreak sh. 7m 7m penalty sh.  
Brk. Breakthrough sh. LD Long distance sh. As. Assists PC Pass clear chance E7 Earned 7m pen. TF Technical faults St. Steals  
2m 2m punishments C7. Committed 7m E2 Earned 2m pun. YC. Yellow cards R/B Red/Blue cards Blk. Blocks S Starting Line-up



# Super Globe Women

## Wuxi (China)

### Placement Match 5-8



IHF Women's Super Globe  
2019

Match Team Statistics

Match No. 6

## Jiangsu Team 33 - 17 University of

## Queensland

(14 - 7) (19 - 10)

2.8.2019. 16:15

Attendance:

Wuxi Sports Hall

Referees: Viktoriia Alpaidze (RUS) / Tatiana Berzkina (RUS)

### University of Queensland

Players		Goals / shots										Attack					Def.			Penalties			TP			
#	Surname and name	S	Tot.	%	9m	6m	Wing	7m	FB	Brk.	LD	As.	PC	E7	E2	TF	St.	C7	Bik	YC	2m	R		B		
1	HARBORT Jemima	S																							38:13	
2	KIRK Jane	S	2/4	50			2/3	0/1								2									34:24	
3	MARIE-ANGELIQUE Sophia	S	0/1	0	0/1											1	1					1			25:09	
7	SKJAERET Ane		3/3	100		2/2		1/1							1	1			1				1		20:05	
9	LOFTUS Camille		0/3	0			0/1		0/2						1	1									10:42	
10	VIANA Aline		2/2	100		2/2										1				1					27:20	
11	GUIGNARD Emma	S	1/3	33	0/1	1/1	0/1									2	1						1		30:35	
13	TANIKAWA Shoko		2/8	25	1/5		0/2			1/1		1				1									39:09	
14	MCAFFEE Madeleine	S	2/7	29	0/2					2/5		1	1	1											15:50	
15	GUSMAO Luiza		1/4	25			1/3			0/1			1			3									23:53	
16	BOYD Rosalie	S	1/6	17	1/5						0/1	3	1		1	10	1	1	6			1			46:16	
19	BERNER Kimberley		2/3	67	0/1	1/1	1/1									1	1	1					1		19:43	
22	COOPER Heather	S	1/4	25			0/3			1/1							1	1							39:20	
24	DOBLOUG Julie														1	1			2		1				24:52	
25	ESTGFAELLER Nora												1												12:55	
93	ROSENGREEN Simone											1				5									11:34	
	Team / bench																									
	UKUPNO		17/48	35	2/15	6/6	4/14	1/2	0/2	4/8	0/1	6	4	2	4	28	5	6	7	1	5	0	0			

Goalkeepers		Saves / shots									
#	Surname and name	Tot.	%	9m	6m	Wing	7m	FB	Brk.	LD	
1	HARBORT Jemima	14/37	38	5/13		1/4	1/5	4/10	2/4	1/1	
25	ESTGFAELLER Nora	4/14	29	1/3		2/3	0/1	0/5	0/1	1/1	
	TOTAL	18/51	35	6/16	0/0	3/7	1/6	6/15	2/5	2/2	

Coach: Caleb Gahan

Number of attacks: 67, Efficiency: 25%, Average Duration: 35.2 seconds

### Attack by type of defense

	Shots	9m	6m	Wing	TF	E7	E2
On def. 6-0	7/23	1/9	4/4	2/7	13	0	1
On def. 3-2-1	8/19	1/6	2/2	2/7	15	2	3
On def. 3-3	1/1	0/0	0/0	0/0	0	0	0
Fastbreak	0/2				0	0	0

### Defense by type

	Total	9m	6m	Wing	Stl.	C7	2m
Def. 6-0	17/39	10/26	0/0	4/8	3	6	5
Def. 3-2-1	0/0	0/0	0/0	0/0	2	0	0
Fastbreak	11/16				0	0	0

### Attack with goalkeeper out

	Attack				Reaction		
	Att.	Eff.	Shots	TF	FB	LD	Tot.
GK out (7 on 6)	1	0%	0/0	1	0/0	0/0	0/0
GK out pl. minority	1	0%	0/1	0	0/0	0/0	0/0
GK in	65	26%	17/47	27	11/16	0/2	11/18

GK out attack is counted if one part or whole attack was GK out

### Attack with player superiority/minority

	Attack				Reaction		
	Att.	Eff.	Shots	TF	FB	LD	Tot.
Superiority +1	9	33%	3/8	2	1/1	0/0	1/1
Normal	42	26%	11/28	20	8/11	0/1	8/12
Minority -1	10	20%	2/10	2	1/2	0/1	1/3

Player superiority counted at the end of attack (in case it changes during attack)

### Defense with opponent goalkeeper out

	Attack				Reaction		
	Att.	Eff.	Shots	TF	FB	LD	Tot.
GK in	67	49%	33/63	9	0/2	0/1	0/3

### Defense with player superiority/minority

	Attack				Reaction		
	Att.	Eff.	Shots	TF	FB	LD	Tot.
Minority -1	12	50%	6/13	1	0/0	0/0	0/0
Normal	40	40%	16/35	7	0/2	0/0	0/2
Superiority +1	9	78%	7/10	0	0/0	0/1	0/1

# Jersey number Tot. Total shooting 6m 6m (line) shooting 9m 9m shooting Wng Wing shooting FB Fastbreak sh. 7m 7m penalty sh.  
 Brk. Breakthrough sh. LD Long distance sh. As. Assists PC Pass clear chance E7 Earned 7m pen. TF Technical faults St. Steals  
 2m 2m punishments C7. Committed 7m E2 Earned 2m pun. YC. Yellow cards R/B Red/Blue cards Blk. Blocks S Starting Line-up



# Super Globe Women

Wuxi (China)

Placement Match 5-8



IHF Women's Super Globe  
2019

Match Team Statistics

Match No. 6

**Jiangsu Team 33 - 17 University of Queensland**

(14 - 7) (19 - 10)

2.8.2019. 16:15

Attendance:

Wuxi Sports Hall

Referees: Viktoriia Alpaidze (RUS) / Tatiana Berzkina (RUS)

## Shot distribution by player

**2 J. Kirk**

		1/1
1/1		

1 post 1 miss.

**3 S.**


Marie-Angelique

**7 A. Skjaeret**

1/1		
		2/2

**9 C. Loftus**


**10 A. Viana**

	1/1	1/1

**11 E. Guignard**

	1/1	

1 post 1 block

**13 S. Tanikawa**

2/2		

1 miss. 2 block

**14 M. McAfee**

1/1		1/1

1 miss. 1 block

**15 L. Gusmao**

	1/1	

**16 R. Boyd**

		1/1

2 miss. 1 block

**19 K. Berner**

2/2		

**22 H. Cooper**

		1/1

**24 J. Dobloug**


**93 S. Rosengreen**


## TOTAL

2/2		
1/1		2/2
6/6	1/1	5/5

2 post 5 miss. 5 block

## Saves distribution goalkeepers

**1 J. Harbort**

0/3		0/2
0/6	0/1	0/10

**25 N. Estgfaeller**

0/1		0/1
0/4	0/1	0/3

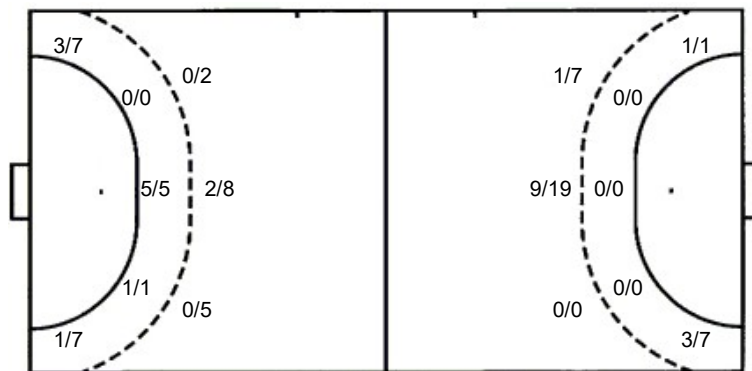
**TOTAL**

0/1		0/1
0/3		0/2
0/10	0/2	0/13

## Shots by position

ATTACK

DEFENSE



7m penalties 1/2  
Fastbreak 0/2  
Breakthrough 4/8  
Long dist. 0/1

7m penalties 5/6  
Fastbreak 11/16  
Breakthrough 3/5  
Long dist. 0/2

## Shooting statistics

Position	Goals	Sav.	Miss.	Post	Blk.	Total	%
Back (9m)	2	5	3	0	5	15	13
Line (6m)	6	0	0	0	0	6	100
Wing	4	8	0	2	0	14	29
7m penalties	1	0	1	0	0	2	50
Fastbreak	0	2	0	0	0	2	0
Breakthrough	4	4	0	0	0	8	50
<b>Total</b>	<b>17</b>	<b>19</b>	<b>4</b>	<b>2</b>	<b>5</b>	<b>47</b>	<b>36</b>

# Jersey number Tot. Total shooting 6m 6m (line) shooting 9m 9m shooting Wng. Wing shooting FB Fastbreak sh. 7m 7m penalty sh.  
Brk. Breakthrough sh. LD Long distance sh. As. Assists PC Pass clear chance E7 Earned 7m pen. TF Technical faults St. Steals  
2m 2m punishments C7. Committed 7m E2 Earned 2m pun. YC. Yellow cards R/B Red/Blue cards Blk. Blocks S Starting Line-up

