



Super Globe Women

Wuxi (China)

Quarterfinal



IHF Women's Super Globe
2019

Match Team Statistics

A.A. UnC Concordia 31 - 16 University of

1.8.2019. 20:45

Match No. 4

Queensland

Attendance:

(16 - 9) (15 - 7)

Wuxi Sports Hall

Referees: Eunha Lee (KOR) / Gaeul Lee (KOR)

A.A. UnC Concordia

Players		Goals / shots									Attack					Def.			Penalties			TP		
#	Surname and name	S	Tot.	%	9m	6m	Wing	7m	FB	Brk.	LD	As.	PC	E7	E2	TF	St.	C7	Blk	YC	2m		R	B
1	VERONA ROTTA Luciane											1				1								17:28
2	KELLER MORCINECK Nadyne	S	3/4	75		3/4										2		1	1	6	1			39:41
3	MARIELLE ENGEL Eduarda																	1				1		4:23
4	OLIVEIRA SOUSA Daise	S	4/6	67	4/6							1				1								37:56
6	M.C.F. CANATA MORINGO Sabrina	S	4/8	50	0/1	2/2	0/3		2/2			1			1					1	1			30:35
7	ISABEL BIEGER Aline		2/2	100					2/2															12:34
10	BELLA D CARMO MONTEIRO Barbarah																							10:07
13	ALVES CARNEIRO Talita	S	6/12	50	3/8	0/1			1/1	2/2		2												36:42
14	R. GONCALVES PEREIRA Agda	S	5/7	71	1/2		1/1	3/3	0/1			1		1	1	1	3							41:41
15	AGUIAR CAMELO BORBA Ana Luiza		2/2	100					2/2						1	2	2					1		24:19
19	SOUZA CAETANO BUCK Amanda		1/1	100	1/1							2				3	2							25:05
20	LIMA DIAS Maite	S										1	1											42:32
22	SOTHE Francieli																	1				1		5:19
73	PEREIRA COSTA Juliane		1/1	100						1/1		2						1	1					22:04
88	B. DO NASCIMENTO FELIX Jamily		2/2	100			1/1		1/1						1	1	1					1		26:01
99	MARTINS SCHNEIDER Tauani	S	1/5	20	0/2	0/2				1/1		1	1			3	2	1	2					43:33
	Team / bench																							
	UKUPNO		31/50	62	9/20	5/9	2/5	3/3	8/9	4/4	0/0	12	2	3	3	13	11	5	9	2	5	0	0	

Goalkeepers		Saves / shots								
#	Surname and name	Tot.	%	9m	6m	Wing	7m	FB	Brk.	LD
1	VERONA ROTTA Luciane	3/8	38	2/2	0/1	1/3	0/2			
20	LIMA DIAS Maite	10/21	48	6/8		2/5	0/3	0/2	2/3	
	TOTAL	13/29	45	8/10	0/1	3/8	0/5	0/2	2/3	0/0

Coach: Alexandre Trevisan Schneider

Number of attacks: 62, Efficiency: 50%, Average Duration: 16.9 seconds

Attack by type of defense

	Shots	9m	6m	Wing	TF	E7	E2
On def. 6-0	18/35	9/19	4/8	1/4	10	2	2
On def. 5-1	2/3	0/1	1/1	1/1	3	1	1
Fastbreak	8/9				0	0	0

Defense by type

	Total	9m	6m	Wing	Stl.	C7	2m
Def. 6-0	9/34	2/20	1/2	5/9	8	5	5
Def. 5-1	0/0	0/0	0/0	0/0	3	0	0
Fastbreak	2/2				0	0	0

Attack with goalkeeper out

	Attack				Reaction		
	Att.	Eff.	Shots	TF	FB	LD	Tot.
GK in	62	50%	31/50	13	2/2	0/0	2/2

GK out attack is counted if one part or whole attack was GK out

Defense with opponent goalkeeper out

	Attack				Reaction		
	Att.	Eff.	Shots	TF	FB	LD	Tot.
GK in	62	26%	16/41	24	8/9	0/0	8/9

Attack with player superiority/minority

	Attack				Reaction		
	Att.	Eff.	Shots	TF	FB	LD	Tot.
Superiority +1	6	50%	3/6	1	0/0	0/0	0/0
Normal	33	64%	21/25	7	1/1	0/0	1/1
Minority -1	14	21%	3/10	5	1/1	0/0	1/1

Player superiority counted at the end of attack (in case it changes during attack)

Defense with player superiority/minority

	Attack				Reaction		
	Att.	Eff.	Shots	TF	FB	LD	Tot.
Minority -1	17	47%	8/12	5	0/0	0/0	0/0
Normal	32	22%	7/21	13	7/7	0/0	7/7
Superiority +1	3	0%	0/2	1	0/0	0/0	0/0

Jersey number Tot. Total shooting 6m 6m (line) shooting 9m 9m shooting Wng Wing shooting FB Fastbreak sh. 7m 7m penalty sh.
 Brk. Breakthrough sh. LD Long distance sh. As. Assists PC Pass clear chance E7 Earned 7m pen. TF Technical faults St. Steals
 2m 2m punishments C7. Committed 7m E2 Earned 2m pun. YC. Yellow cards R/B Red/Blue cards Blk. Blocks S Starting Line-up



Super Globe Women

Wuxi (China)

Quarterfinal



IHF Women's Super Globe 2019

Match Team Statistics
Match No. 4

A.A. UnC Concordia 31 - 16 University of Queensland

(16 - 9) (15 - 7)

1.8.2019. 20:45
Attendance:
Wuxi Sports Hall

Referees: Eunha Lee (KOR) / Gaeul Lee (KOR)

Shot distribution by player

2 N. Keller Morcinek

1/1		
	1/1	1/1

3 E. Marielle Engel

4 D. Oliveira Sousa

		1/1
1/1		
2/2		

1 post 1 miss.

6 S. M.C.F. Canata Moringo

1/1		
1/1	2/2	

3 miss.

7 A. Isabel Bieger

2/2		

10 B. Bella D carmo Monteiro

13 T. Alves Carneiro

2/2		
2/2		1/1
1/1		

2 post 1 miss. 1 block

14 A. R. Goncalves Pereira

1/1		
2/2		1/1

1/1 lob

15 A. Aguiar Camelo Borba

1/1		
	1/1	

19 A. Souza Caetano Buck

1/1		

22 F. Sothe

73 J. Pereira Costa

1/1		

88 J. B. do Nascimento Felix

1/1		

1/1 lob

99 T. Martins Schneider

1/1		

1 post 1 block

TOTAL

4/4		1/1
8/8		1/1
9/9	4/4	2/2

4 post 5 miss. 2 block 2/2 lob

Saves distribution goalkeepers

1 L. Verona Rotta

		0/2
0/1		
		0/2

20 M. Lima Dias

		0/2
		0/2
0/6		0/1

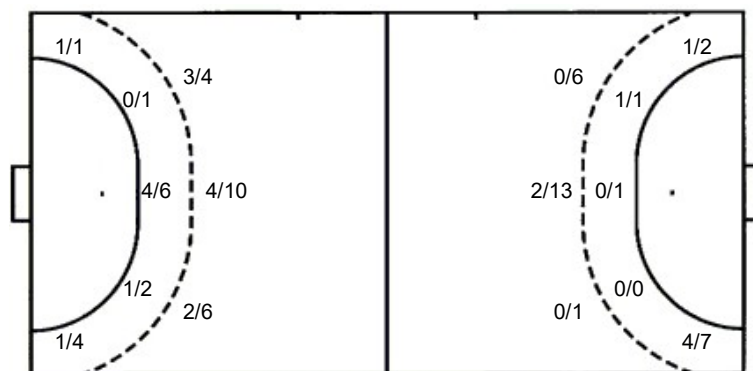
TOTAL

		0/4
0/1		0/2
0/6		0/3

Shots by position

ATTACK

DEFENSE



7m penalties 3/3
Fastbreak 8/9
Breakthrough 4/4
Long dist. 0/0

7m penalties 5/5
Fastbreak 2/2
Breakthrough 1/3
Long dist. 0/0

Shooting statistics

Position	Goals	Sav.	Miss.	Post	Blk.	Total	%
Back (9m)	9	3	3	3	2	20	45
Line (6m)	5	3	0	1	0	9	56
Wing	2	1	2	0	0	5	40
7m penalties	3	0	0	0	0	3	100
Fastbreak	8	1	0	0	0	9	89
Breakthrough	4	0	0	0	0	4	100
Total	31	8	5	4	2	50	62

Jersey number Tot. Total shooting 6m 6m (line) shooting 9m 9m shooting Wng. Wing shooting FB Fastbreak sh. 7m 7m penalty sh.
Brk. Breakthrough sh. LD Long distance sh. As. Assists PC Pass clear chance E7 Earned 7m pen. TF Technical faults St. Steals
2m 2m punishments C7. Committed 7m E2 Earned 2m pun. YC. Yellow cards R/B Red/Blue cards Blk. Blocks S Starting Line-up



Super Globe Women

Wuxi (China)

Quarterfinal



IHF Women's Super Globe
2019

Match Team Statistics

A.A. UnC Concordia 31 - 16 University of Queensland

1.8.2019. 20:45

Match No. 4

Attendance:

Wuxi Sports Hall

(16 - 9) (15 - 7)

Referees: Eunha Lee (KOR) / Gaeul Lee (KOR)

University of Queensland

Players		Goals / shots									Attack					Def.			Penalties			TP		
#	Surname and name	S	Tot.	%	9m	6m	Wing	7m	FB	Brk.	LD	As.	PC	E7	E2	TF	St.	C7	Blk	YC	2m		R	B
1	HARBORT Jemima	S																						47:48
2	KIRK Jane		7/9	78			4/6	3/3										1						20:29
3	MARIE-ANGELIQUE Sophia	S	1/5	20	1/4					0/1						2		1	2		1			31:00
7	SKJAERET Ane		1/2	50		1/2						1				2								43:54
9	LOFTUS Camille	S																						10:11
10	VIANA Aline													1	1									10:03
11	GUIGNARD Emma		1/3	33	0/2					1/1		1	1			2								40:08
13	TANIKAWA Shoko		1/2	50		1/2								1										31:44
14	MCAFEE Madeleine	S	0/5	0	0/5							1		1	3	6	1							24:35
15	GUSMAO Luiza	S	1/2	50			0/1		1/1							1								31:43
16	BOYD Rosalie	S	0/3	0	0/3								1			3		1			1			27:24
19	BERNER Kimberley		2/5	40	0/3			2/2				1		2	1	7	1	1			1			32:14
22	COOPER Heather	S	1/2	50					1/1	0/1														17:43
24	DOBLOUG Julie																							35:47
25	ESTGFAELLER Nora																							3:58
93	ROSENGREEN Simone		1/3	33	1/3											1								11:19
	Team / bench																							
	UKUPNO		16/41	39	2/20	1/2	5/9	5/5	2/2	1/3	0/0	4	2	5	5	24	3	3	2	0	3	0	0	

Goalkeepers		Saves / shots								
#	Surname and name	Tot.	%	9m	6m	Wing	7m	FB	Brk.	LD
1	HARBORT Jemima	7/34	21	3/11	2/6	1/3	0/3	1/7	0/4	
25	ESTGFAELLER Nora	1/5	20	0/1	1/2			0/2		
	TOTAL	8/39	21	3/12	3/8	1/3	0/3	1/9	0/4	0/0

Coach: Caleb Gahan

Number of attacks: 62, Efficiency: 26%, Average Duration: 41.2 seconds

Attack by type of defense

	Shots	9m	6m	Wing	TF	E7	E2
On def. 6-0	9/34	2/20	1/2	5/9	24	5	5
Fastbreak	2/2				0	0	0

Defense by type

	Total	9m	6m	Wing	Stl.	C7	2m
Def. 6-0	18/35	9/19	4/8	1/4	3	2	2
Def. 5-1	2/3	0/1	1/1	1/1	0	1	1
Fastbreak	8/9				0	0	0

Attack with goalkeeper out

	Attack				Reaction		
	Att.	Eff.	Shots	TF	FB	LD	Tot.
GK in	62	26%	16/41	24	8/9	0/0	8/9

GK out attack is counted if one part or whole attack was GK out

Defense with opponent goalkeeper out

	Attack				Reaction		
	Att.	Eff.	Shots	TF	FB	LD	Tot.
GK in	62	50%	31/50	13	2/2	0/0	2/2

Attack with player superiority/minority

	Attack				Reaction		
	Att.	Eff.	Shots	TF	FB	LD	Tot.
Superiority +1	17	47%	8/12	5	0/0	0/0	0/0
Normal	32	22%	7/21	13	7/7	0/0	7/7
Minority -1	3	0%	0/2	1	0/0	0/0	0/0

Player superiority counted at the end of attack (in case it changes during attack)

Defense with player superiority/minority

	Attack				Reaction		
	Att.	Eff.	Shots	TF	FB	LD	Tot.
Minority -1	6	50%	3/6	1	0/0	0/0	0/0
Normal	33	64%	21/25	7	1/1	0/0	1/1
Superiority +1	14	21%	3/10	5	1/1	0/0	1/1

Jersey number Tot. Total shooting 6m 6m (line) shooting 9m 9m shooting Wng Wing shooting FB Fastbreak sh. 7m 7m penalty sh.
 Brk. Breakthrough sh. LD Long distance sh. As. Assists PC Pass clear chance E7 Earned 7m pen. TF Technical faults St. Steals
 2m 2m punishments C7. Committed 7m E2 Earned 2m pun. YC. Yellow cards R/B Red/Blue cards Blk. Blocks S Starting Line-up



Super Globe Women

Wuxi (China)

Quarterfinal



IHF Women's Super Globe
2019

Match Team Statistics

Match No. 4

A.A. UnC Concordia 31 - 16 University of Queensland

(16 - 9) (15 - 7)

1.8.2019. 20:45

Attendance:

Wuxi Sports Hall

Referees: Eunha Lee (KOR) / Gaeul Lee (KOR)

Shot distribution by player

2 J. Kirk

		2/2
2/2		3/3

1 post

3 S.

Marie-Angelique

		1/1

1 miss. 1 block

7 A. Skjaeret

1/1		

1 miss.

9 C. Loftus

10 A. Viana

11 E. Guignard

		1/1

1 block

13 S. Tanikawa

1/1		

14 M. McAfee

2 block

15 L. Gusmao

1/1		

16 R. Boyd

2 block

19 K. Berner

		1/1
1/1		

2 block

22 H. Cooper

		1/1

24 J. Dobloug

93 S. Rosengreen

1/1		

1 block

TOTAL

		4/4
1/1		2/2
6/6		3/3

1 post 2 miss. 9 block

Saves distribution goalkeepers

1 J. Harbort

0/4		0/1
0/6		
0/9	0/3	0/2

25 N. Estgfaeller

0/2		0/1
	0/1	

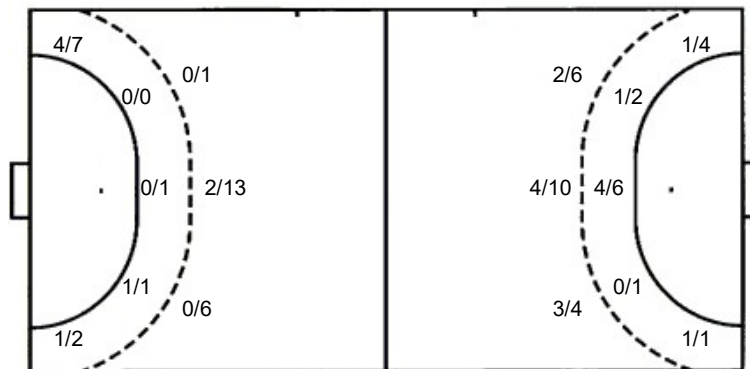
TOTAL

0/4		0/1
0/8		0/1
0/9	0/4	0/2

Shots by position

ATTACK

DEFENSE



7m penalties 5/5
Fastbreak 2/2
Breakthrough 1/3
Long dist. 0/0

7m penalties 3/3
Fastbreak 8/9
Breakthrough 4/4
Long dist. 0/0

Shooting statistics

Position	Goals	Sav.	Miss.	Post	Blk.	Total	%
Back (9m)	2	8	1	0	9	20	10
Line (6m)	1	0	1	0	0	2	50
Wing	5	3	0	1	0	9	56
7m penalties	5	0	0	0	0	5	100
Fastbreak	2	0	0	0	0	2	100
Breakthrough	1	2	0	0	0	3	33
Total	16	13	2	1	9	41	39

Jersey number Tot. Total shooting 6m 6m (line) shooting 9m 9m shooting Wng. Wing shooting FB Fastbreak sh. 7m 7m penalty sh.
Brk. Breakthrough sh. LD Long distance sh. As. Assists PC Pass clear chance E7 Earned 7m pen. TF Technical faults St. Steals
2m 2m punishments C7. Committed 7m E2 Earned 2m pun. YC. Yellow cards R/B Red/Blue cards Blk. Blocks S Starting Line-up

