



Super Globe Women

Wuxi (China)

Quarterfinal



IHF Women's Super Globe
2019

Match Team Statistics

Agosto Luanda 41 - 20 Jianguo Team

1.8.2019. 18:30

Match No. 3

(23 - 11) (18 - 9)

Attendance:

Wuxi Sports Hall

Referees: Viktoriia Alpaidze (RUS) / Tatiana Berzkina (RUS)

Agosto Luanda

#	Surname and name	S	Goals / shots							Attack					Def.			Penalties			TP			
			Tot.	%	9m	6m	Wing	7m	FB	Brk.	LD	As.	PC	E7	E2	TF	St.	C7	Blk	YC		2m	R	B
3	DA SILVA Iracelma	S	3/3	100		3/3										2								45:56
4	PAULO Helena Gilda Simao	S	5/7	71	1/2			3/3		1/1	0/1	2				1	1		1					28:09
6	MACHADO Juliana		4/4	100	2/2				1/1	1/1		1			3			1						22:05
8	JOAO Ruth Francisco		2/3	67		0/1			1/1	1/1			1	1				3						19:33
9	BERNARDO Natalia		2/2	100				2/2					1	1										10:25
10	SILVA Vilma		2/2	100	1/1				1/1				2			1	1		1					15:48
11	KASSOMA Albertina	S	5/5	100		2/2		1/1			2/2	1	3	1	1			3						37:00
12	LIOVERAS Eleneidys	S												1										19:00
15	VENANCIO Liliana	S	1/1	100		1/1								1				3						31:39
16	SOUSA Helena																							33:55
18	JOSE Claudete	S	3/6	50		2/3			1/1		0/2				2				1					35:13
19	DOMBAXI Wuta	S	4/6	67	1/2	2/3					1/1	2		1	4									33:53
20	PINTO Amalia																							6:52
23	MWASESA Cristiane		5/7	71	4/5			1/1		0/1		3	1	1				1						28:39
31	SANTOS Janete		2/5	40		1/4					1/1													24:59
90	GUILAO Isabel		3/5	60	3/4			0/1				1	2		1			1						26:54
	Team / bench																							
	UKUPNO		41/56	73	12/16	11/17	0/0	7/8	4/4	3/4	4/7	10	3	8	2	15	4	2	12	2	1	0	0	

#	Surname and name	Saves / shots								
		Tot.	%	9m	6m	Wing	7m	FB	Brk.	LD
12	LIOVERAS Eleneidys	4/11	36	2/7	1/3		1/1			
16	SOUSA Helena	10/19	53	4/5	3/7			3/4	0/3	
20	PINTO Amalia	0/4	0		0/1		0/1	0/1	0/1	
	TOTAL	14/34	41	6/12	4/11	0/0	1/2	3/5	0/4	0/0

Coach: Morten Soubak

Number of attacks: 69, Efficiency: 59%, Average Duration: 26.0 seconds

Attack by type of defense

	Shots	9m	6m	Wing	TF	E7	E2
On def. 6-0	25/37	11/16	11/17	0/0	14	8	2
On def. 5-1	0/0	0/0	0/0	0/0	1	0	0
Fastbreak	4/4				0	0	0

Defense by type

	Total	9m	6m	Wing	Stl.	C7	2m
Def. 6-0	5/19	0/10	3/7	0/0	4	1	1
Def. 5-1	11/27	5/19	4/6	0/0	0	1	0
Fastbreak	2/6				0	0	0

Attack with goalkeeper out

	Attack				Reaction		
	Att.	Eff.	Shots	TF	FB	LD	Tot.
GK in	69	58%	40/56	15	2/6	0/0	2/6

GK out attack is counted if one part or whole attack was GK out

Defense with opponent goalkeeper out

	Attack				Reaction		
	Att.	Eff.	Shots	TF	FB	LD	Tot.
GK out (7 on 6)	3	67%	2/2	0	0/0	0/0	0/0
GK in	61	26%	16/46	19	4/4	2/5	6/9

Attack with player superiority/minority

	Attack				Reaction		
	Att.	Eff.	Shots	TF	FB	LD	Tot.
Superiority +1	25	64%	16/20	5	0/0	0/0	0/0
Normal	41	56%	23/35	8	1/5	0/0	1/5
Minority -1	3	33%	1/1	2	1/1	0/0	1/1

Player superiority counted at the end of attack (in case it changes during attack)

Defense with player superiority/minority

	Attack				Reaction		
	Att.	Eff.	Shots	TF	FB	LD	Tot.
Minority -1	3	100%	3/3	0	0/0	0/0	0/0
Normal	44	30%	13/37	11	1/1	0/0	1/1
Superiority +1	22	14%	3/13	9	3/3	4/7	7/10

Jersey number Tot. Total shooting 6m 6m (line) shooting 9m 9m shooting Wng Wing shooting FB Fastbreak sh. 7m 7m penalty sh.
 Brk. Breakthrough sh. LD Long distance sh. As. Assists PC Pass clear chance E7 Earned 7m pen. TF Technical faults St. Steals
 2m 2m punishments C7. Committed 7m E2 Earned 2m pun. YC. Yellow cards R/B Red/Blue cards Blk. Blocks S Starting Line-up



Super Globe Women

Wuxi (China)

Quarterfinal



IHF Women's Super Globe 2019

Match Team Statistics

Match No. 3

Agosto Luanda 41 - 20 Jiangsu Team

(23 - 11) (18 - 9)

1.8.2019. 18:30

Attendance:

Wuxi Sports Hall

Referees: Viktoriia Alpaidze (RUS) / Tatiana Berzkina (RUS)

Shot distribution by player

3 I. Da Silva

1/1		
1/1		

1/1 lob

4 H. Paulo

1/1		
1/1		3/3

2 miss.

6 J. Machado

2/2		
1/1		
		1/1

1 post 1 block

8 R. Joao

		1/1
1/1		

1 miss.

9 N. Bernardo

1/1		
1/1		

1 post 1 miss.

10 V. Silva

1/1		
		1/1

1 post

11 A. Kassoma

		1/1
	1/1	
2/2		1/1

15 L. Venancio

		1/1

18 C. Jose

		1/1
2/2		

1 miss.

19 W. Dombaxi

1/1		
	1/1	
2/2		

1 post 1 block

23 C. Mwasesa

1/1		1/1
3/3		

1 miss.

31 J. Santos

	1/1	
		1/1

1 post 1 miss.

90 I. Guilao

		2/2

1 post

TOTAL

7/7		4/4
2/2	3/3	3/3
13/13		7/7

3 post 5 miss. 1 block 1/1 lob

Saves distribution goalkeepers

12 E. Lioveras

0/1		0/1
		0/1
0/3		

16 H. Sousa

		0/1
0/4	0/1	0/3

20 A. Pinto

0/2		0/2

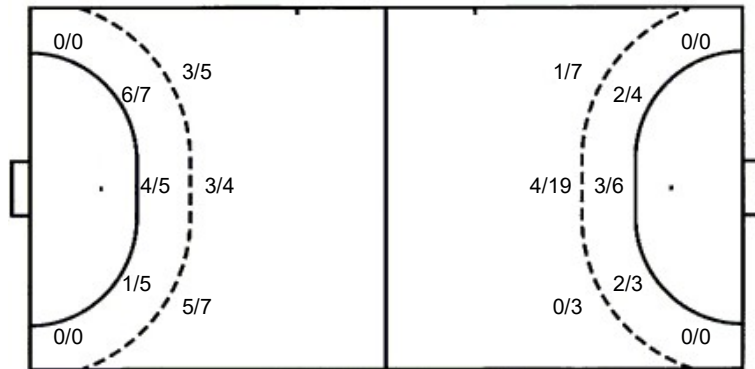
TOTAL

0/1		0/1
		0/2
0/9	0/1	0/5

Shots by position

ATTACK

DEFENSE



7m penalties 7/8
Fastbreak 4/4
Breakthrough 3/4
Long dist. 4/7

7m penalties 1/2
Fastbreak 2/6
Breakthrough 4/4
Long dist. 0/0

Shooting statistics

Position	Goals	Sav.	Miss.	Post	Bik.	Total	%
Back (9m)	11	1	1	1	1	16	69
Line (6m)	11	3	1	2	0	17	65
Wing	0	0	0	0	0	0	0
7m penalties	7	1	0	0	0	8	88
Fastbreak	4	0	0	0	0	4	100
Breakthrough	3	0	1	0	0	4	75
Total	36	5	3	3	1	49	73

Jersey number Tot. Total shooting 6m 6m (line) shooting 9m 9m shooting Wng. Wing shooting FB Fastbreak sh. 7m 7m penalty sh.
Brk. Breakthrough sh. LD Long distance sh. As. Assists PC Pass clear chance E7 Earned 7m pen. TF Technical faults St. Steals
2m 2m punishments C7. Committed 7m E2 Earned 2m pun. YC. Yellow cards R/B Red/Blue cards Blk. Blocks S Starting Line-up



Super Globe Women

Wuxi (China)

Quarterfinal



IHF Women's Super Globe
2019

Match Team Statistics

Agosto Luanda 41 - 20 Jianguo Team

1.8.2019. 18:30

Match No. 3

(23 - 11) (18 - 9)

Attendance:

Wuxi Sports Hall

Referees: Viktoriia Alpaidze (RUS) / Tatiana Berzkina (RUS)

Jianguo Team

Players		Goals / shots									Attack					Def.			Penalties			TP			
#	Surname and name	S	Tot.	%	9m	6m	Wing	7m	FB	Brk.	LD	As.	PC	E7	E2	TF	St.	C7	Blk	YC	2m		R	B	
1	SONG Chenxi	S																							31:30
5	WANG Dan		1/1	100		1/1										4		1					1		17:28
6	FENG Yang	S	2/4	50		1/2			0/1	1/1						2		1					1		40:07
7	SUN Jiao	S	1/3	33		1/3													3				1		46:11
10	WANG Keke		1/3	33	0/2					1/1								1							14:23
11	YU Yuanyuan	S														1									30:00
13	HUANG Huiying		3/4	75		0/1			1/1	2/2					1	1		1							30:40
14	XU Hanshu		2/5	40		0/1		1/1	1/3									1							
15	XIE Mingyue												1												19:53
17	WU Meiqi																								
18	DAI Xiaoyu	S	2/7	29	0/3	2/3		0/1					1	1	1	6		2					1		42:42
19	JIAO Ya		0/4	0	0/4								1			2									22:30
21	GAO Yuanyuan		1/4	25	1/4								1										1		21:45
22	PENG Ruyu	S																1							30:20
23	WANG Shuhui	S	6/17	35	5/16	1/1							1			5		1	1	1	1	2			35:40
28	LIANG Rong		1/2	50		1/1			0/1																36:51
	Team / bench																						1		
	UKUPNO		20/54	37	6/29	7/13	0/0	1/2	2/6	4/4	0/0	4	4	2	1	20	4	8	1	2	7	0	0		

Goalkeepers		Saves / shots								
#	Surname and name	Tot.	%	9m	6m	Wing	7m	FB	Brk.	LD
1	SONG Chenxi	5/21	24	1/5	2/8		1/4	0/1		1/3
22	PENG Ruyu	1/26	4	0/8	1/6		0/4	0/3	0/3	0/2
	TOTAL	6/47	13	1/13	3/14	0/0	1/8	3/4	0/3	1/5

Coach: Jiashu Kim

Number of attacks: 70, Efficiency: 29%, Average Duration: 25.8 seconds

Attack by type of defense

	Shots	9m	6m	Wing	TF	E7	E2
On def. 6-0	5/19	0/10	3/7	0/0	9	1	1
On def. 5-1	11/27	5/19	4/6	0/0	11	1	0
Fastbreak	2/6				0	0	0

Defense by type

	Total	9m	6m	Wing	Stl.	C7	2m
Def. 6-0	25/37	11/16	11/17	0/0	3	8	6
Def. 5-1	0/0	0/0	0/0	0/0	1	0	1
Fastbreak	4/4				0	0	0

Attack with goalkeeper out

	Attack				Reaction		
	Att.	Eff.	Shots	TF	FB	LD	Tot.
GK out (7 on 6)	3	67%	2/2	0	0/0	0/0	0/0
GK out pl. minority	6	17%	1/6	1	0/0	2/2	2/2
GK in	61	26%	16/46	19	4/4	2/5	6/9

GK out attack is counted if one part or whole attack was GK out

Attack with player superiority/minority

	Attack				Reaction		
	Att.	Eff.	Shots	TF	FB	LD	Tot.
Superiority +1	3	100%	3/3	0	0/0	0/0	0/0
Normal	44	30%	13/37	11	1/1	0/0	1/1
Minority -1	22	14%	3/13	9	3/3	4/7	7/10

Player superiority counted at the end of attack (in case it changes during attack)

Defense with opponent goalkeeper out

	Attack				Reaction		
	Att.	Eff.	Shots	TF	FB	LD	Tot.
GK in	69	58%	40/56	15	2/6	0/0	2/6

Defense with player superiority/minority

	Attack				Reaction		
	Att.	Eff.	Shots	TF	FB	LD	Tot.
Minority -1	25	64%	16/20	5	0/0	0/0	0/0
Normal	41	56%	23/35	8	1/5	0/0	1/5
Superiority +1	3	33%	1/1	2	1/1	0/0	1/1

Jersey number Tot. Total shooting 6m 6m (line) shooting 9m 9m shooting Wng Wing shooting FB Fastbreak sh. 7m 7m penalty sh.
 Brk. Breakthrough sh. LD Long distance sh. As. Assists PC Pass clear chance E7 Earned 7m pen. TF Technical faults St. Steals
 2m 2m punishments C7. Committed 7m E2 Earned 2m pun. YC. Yellow cards R/B Red/Blue cards Blk. Blocks S Starting Line-up



Super Globe Women

Wuxi (China)

Quarterfinal



IHF Women's Super Globe
2019

Match Team Statistics

Match No. 3

Agosto Luanda 41 - 20 Jiangsu Team

(23 - 11) (18 - 9)

1.8.2019. 18:30

Attendance:

Wuxi Sports Hall

Referees: Viktoriia Alpaidze (RUS) / Tatiana Berzkina (RUS)

Shot distribution by player

5 D. Wang

		1/1

6 Y. Feng

		1/1
1/1		

1 miss.

7 J. Sun

1/1		

10 K. Wang

		1/1

1 block

11 Y. Yu

13 H. Huang

1/1		2/2

14 H. Xu

1/1		1/1

1 post 1 miss.

15 M. Xie

17 M. Wu

18 X. Dai

1/1	1/1	

1 miss. 1 block

19 Y. Jiao

2 miss. 1 block

21 Y. Gao

		1/1

1 miss. 1 block

23 S. Wang

1/1		1/1
3/3		

1 miss. 8 block

28 R. Liang

1/1		

TOTAL

1/1		1/1
		2/2
9/9	1/1	5/5

1 post 7 miss. 12 block

Saves distribution goalkeepers

1 C. Song

0/3		0/2
	0/2	0/1
0/4		0/4

22 R. Peng

0/4		0/2
0/2	0/1	0/2
0/9		0/3

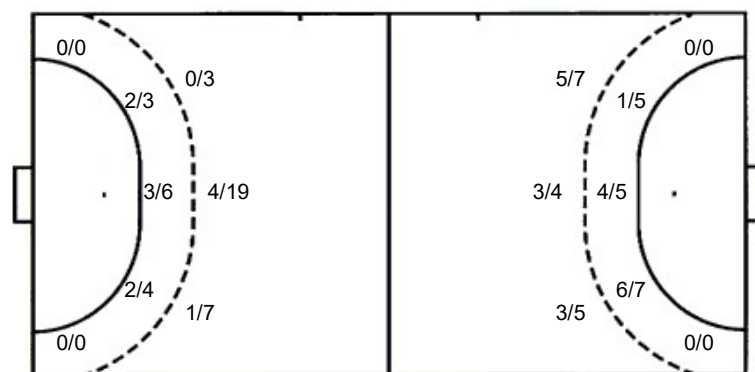
TOTAL

0/7		0/4
0/2	0/3	0/3
0/13		0/7

Shots by position

ATTACK

DEFENSE



7m penalties 1/2
Fastbreak 2/6
Breakthrough 4/4
Long dist. 0/0

7m penalties 7/8
Fastbreak 4/4
Breakthrough 3/4
Long dist. 4/7

Shooting statistics

Position	Goals	Sav.	Miss.	Post	Blk.	Total	%
Back (9m)	5	6	5	0	12	29	17
Line (6m)	7	4	1	1	0	13	54
Wing	0	0	0	0	0	0	0
7m penalties	1	1	0	0	0	2	50
Fastbreak	2	3	1	0	0	6	33
Breakthrough	4	0	0	0	0	4	100
Total	19	14	7	1	12	54	35

Jersey number Tot. Total shooting 6m 6m (line) shooting 9m 9m shooting Wng. Wing shooting FB Fastbreak sh. 7m 7m penalty sh.
Brk. Breakthrough sh. LD Long distance sh. As. Assists PC Pass clear chance E7 Earned 7m pen. TF Technical faults St. Steals
2m 2m punishments C7. Committed 7m E2 Earned 2m pun. YC. Yellow cards R/B Red/Blue cards Blk. Blocks S Starting Line-up

