



Super Globe Women

Wuxi (China)

Quarterfinal



IHF Women's Super Globe
2019

Match Team Statistics

Match No. 2

Kaysar Club 21 - 24 Chinese National C

(9 - 10) (12 - 14)

1.8.2019. 16:15

Attendance: 250

Wuxi Sports Hall

Referees: Ignacio Garcia (ESP) / Andreu Marin (ESP)

Kaysar Club

Players		Goals / shots										Attack					Def.			Penalties			TP		
#	Surname and name	S	Tot.	%	9m	6m	Wing	7m	FB	Brk.	LD	As.	PC	E7	E2	TF	St.	C7	Blk	YC	2m	R		B	
3	SITNIKOVA Mariya		1/1	100		1/1																			17:55
4	REJEMETOVA Sevara	S	0/1	0						0/1															46:18
7	SYZDYKOVA Lunara		1/1	100			1/1																		11:11
8	POLUYANKO Natalya		1/1	100		1/1																			7:40
9	PUPCHENKOVA Mariya		1/1	100		1/1											1								27:53
10	YEGUNOVA Olga																								
11	ISKAKOVA Feruza																								
12	AITENOVA Zhannat	S										1				1	1								54:43
13	ILINA Natalya	S	1/4	25	0/1			0/1	0/1	1/1			1			1		1	1						41:06
14	KHARDINA Veronika	S	2/5	40	2/4		0/1							1	1			1				1			43:05
15	ABDIKHAMIT Arailym		0/1	0		0/1								1		1									19:40
16	DAVYDOVA Tatyana																								
17	ALEXANDROVA Irina	S	7/12	58	3/8	2/2		2/2						1		3		1	1	1					52:50
18	PIKALOVA Marina	S	1/2	50		1/1			0/1					1		1									31:18
44	STEPANOVA Kristina		0/2	0	0/2							1													6:45
96	ABILDA Dana	S	6/10	60	2/4			1/1	1/1	2/3	0/1		1			1	5		1			1			59:36
	Team / bench																								
	UKUPNO		21/41	51	7/19	5/6	2/3	3/4	1/3	3/5	0/1	3	1	4	2	12	2	4	2	1	2	0	0		

Goalkeepers		Saves / shots									
#	Surname and name	Tot.	%	9m	6m	Wing	7m	FB	Brk.	LD	
12	AITENOVA Zhannat	15/39	38	3/10	3/9	5/9	1/3	2/4	1/3	0/1	
16	DAVYDOVA Tatyana										
	TOTAL	15/39	38	3/10	3/9	5/9	1/3	2/4	1/3	0/1	

Coach: Vyacheslav Kim

Number of attacks: 51, Efficiency: 41%, Average Duration: 44.8 seconds

Attack by type of defense

	Shots	9m	6m	Wing	TF	E7	E2
On def. 6-0	12/25	6/15	2/3	2/3	8	1	0
On def. 3-2-1	5/8	1/4	3/3	0/0	4	3	2
Fastbreak	1/3				0	0	0

Defense by type

	Total	9m	6m	Wing	Stl.	C7	2m
Def. 6-0	19/34	7/12	6/9	4/9	2	4	2
Fastbreak	2/4				0	0	0

Attack with goalkeeper out

	Attack				Reaction		
	Att.	Eff.	Shots	TF	FB	LD	Tot.
GK out (7 on 6)	2	0%	0/0	2	0/0	0/0	0/0
GK out pl. minority	1	0%	0/1	0	0/0	0/0	0/0
GK in	48	44%	21/40	10	2/4	1/1	3/5

GK out attack is counted if one part or whole attack was GK out

Attack with player superiority/minority

	Attack				Reaction		
	Att.	Eff.	Shots	TF	FB	LD	Tot.
Superiority +1	7	57%	4/7	0	0/0	0/0	0/0
Normal	40	40%	16/32	10	2/4	1/1	3/5
Minority -1	3	33%	1/2	1	0/0	0/0	0/0

Player superiority counted at the end of attack (in case it changes during attack)

Defense with opponent goalkeeper out

	Attack				Reaction		
	Att.	Eff.	Shots	TF	FB	LD	Tot.
GK out (7 on 6)	1	0%	0/1	0	0/0	0/0	0/0
GK in	46	50%	23/39	9	1/3	0/1	1/4

Defense with player superiority/minority

	Attack				Reaction		
	Att.	Eff.	Shots	TF	FB	LD	Tot.
Minority -1	4	50%	2/3	1	0/0	0/0	0/0
Normal	39	49%	19/34	7	1/3	0/0	1/3
Superiority +1	5	20%	1/4	1	0/0	0/1	0/1

Jersey number Tot. Total shooting 6m 6m (line) shooting 9m 9m shooting Wng Wing shooting FB Fastbreak sh. 7m 7m penalty sh.
 Brk. Breakthrough sh. LD Long distance sh. As. Assists PC Pass clear chance E7 Earned 7m pen. TF Technical faults St. Steals
 2m 2m punishments C7. Committed 7m E2 Earned 2m pun. YC. Yellow cards R/B Red/Blue cards Blk. Blocks S Starting Line-up



Super Globe Women

Wuxi (China)

Quarterfinal



IHF Women's Super Globe
2019

Match Team Statistics

Match No. 2

Kaysar Club 21 - 24 Chinese National C

(9 - 10) (12 - 14)

1.8.2019. 16:15

Attendance: 250

Wuxi Sports Hall

Referees: Ignacio Garcia (ESP) / Andreu Marin (ESP)

Shot distribution by player

3 M. Sitnikova

		1/1

4 S. Rejemetova

7 L. Syzdykova

1/1		

8 N. Poluyanko

	1/1	

9 M. Pupchenkova

1/1		

10 O. Yegunova

11 F. Iskakova

13 N. Ilina

1/1		

14 V. Khardina

		1/1
		1/1

2 post 1 block

15 A. Abdikhamit

17 I. Alexandrova

1/1		
		1/1
3/3		2/2

1 miss. 2 block

18 M. Pikalova

1/1 lob

44 K. Stepanova

1 miss.

96 D. Abilda

		2/2
1/1		1/1
1/1		1/1

1 block

TOTAL

1/1		3/3
1/1		3/3
6/6	2/2	4/4

2 post 2 miss. 4 block 1/1
lob

Saves distribution goalkeepers

12 Z. Aitenova

0/9		0/2
0/2	0/1	0/2
0/1	0/1	0/5

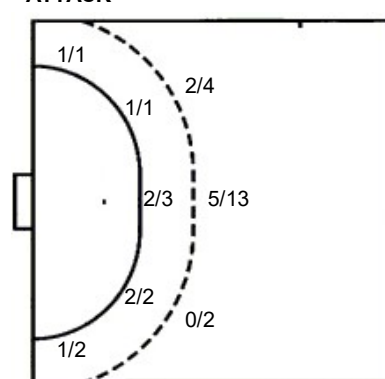
16 T. Davydova

TOTAL

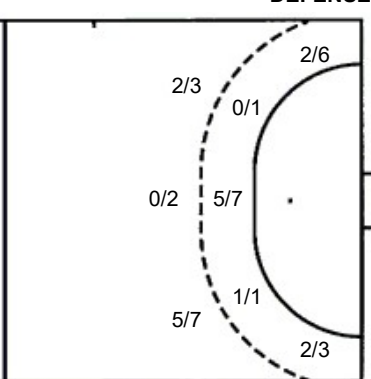
0/9		0/2
0/2	0/1	0/2
0/1	0/1	0/5

Shots by position

ATTACK



DEFENSE



7m penalties 3/4
Fastbreak 1/3
Breakthrough 3/5
Long dist. 0/1

7m penalties 2/4
Fastbreak 2/4
Breakthrough 2/4
Long dist. 1/1

Shooting statistics

Position	Goals	Sav.	Miss.	Post	Blk.	Total	%
Back (9m)	7	5	2	1	4	19	37
Line (6m)	5	1	0	0	0	6	83
Wing	2	0	0	1	0	3	67
7m penalties	3	1	0	0	0	4	75
Fastbreak	1	2	0	0	0	3	33
Breakthrough	3	2	0	0	0	5	60
Total	21	11	2	2	4	40	53

Jersey number Tot. Total shooting 6m 6m (line) shooting 9m 9m shooting Wng. Wing shooting FB Fastbreak sh. 7m 7m penalty sh.
Brk. Breakthrough sh. LD Long distance sh. As. Assists PC Pass clear chance E7 Earned 7m pen. TF Technical faults St. Steals
2m 2m punishments C7. Committed 7m E2 Earned 2m pun. YC. Yellow cards R/B Red/Blue cards Blk. Blocks S Starting Line-up



Super Globe Women

Wuxi (China)

Quarterfinal



IHF Women's Super Globe
2019

Match Team Statistics

Match No. 2

Kaysar Club 21 - 24 Chinese National C

(9 - 10) (12 - 14)

1.8.2019. 16:15

Attendance: 250

Wuxi Sports Hall

Referees: Ignacio Garcia (ESP) / Andreu Marin (ESP)

Chinese National Club

Players		Goals / shots									Attack					Def.			Penalties			TP			
#	Surname and name	S	Tot.	%	9m	6m	Wing	7m	FB	Brk.	LD	As.	PC	E7	E2	TF	St.	C7	Blk	YC	2m	R	B		
1	LU Chang																								0:30
2	LIN Yan Qun															1									5:50
3	ZHANG Hai Xia		3/5	60			2/3		1/2							1	1								47:26
5	XIN Yan		0/1	0		0/1								1											8:54
6	HUANG Yan	S	1/5	20	0/2	0/1			1/1	0/1		1			1										22:29
10	TIAN Xiu Xiu	S	2/7	29			1/4	0/1	0/1	1/1								1		1					30:00
14	LIU Xiao Mei	S	5/7	71	5/7							5	1			3		2							41:36
19	MO Meng Meng	S												1								1			31:44
21	ZHAO Jia Qin	S	2/4	50	1/1			1/2		0/1		4	2			2									31:12
22	YANG Yu Rou	S											1			1									57:20
27	LI Yao		2/3	67			1/2				1/1						1								29:50
28	QIAO Ru		6/7	86		6/7						2		1					2						38:13
30	ZHOU Lei	S																		1	2				15:47
34	JIN Meng Qing		2/2	100				1/1		1/1			1												19:49
69	LAN Xiao Ling		1/2	50	1/2							1						1	2						39:20
93	ZHANG Ting Ting																								
	Team / bench																								
	UKUPNO		24/43	56	7/12	6/9	4/9	2/4	2/4	2/4	1/1	13	5	3	0	9	2	4	4	2	3	0	0		

Goalkeepers		Saves / shots								
#	Surname and name	Tot.	%	9m	6m	Wing	7m	FB	Brk.	LD
1	LU Chang	0/3	0				0/2	0/1		
22	YANG Yu Rou	12/30	40	5/12	1/6	0/2	1/2	2/2	2/5	1/1
	TOTAL	12/33	36	5/12	1/6	0/2	1/4	4/3	2/5	1/1

Coach: **Jorn-Uwe Lommel**

Number of attacks: 50, Efficiency: 48%, Average Duration: 26.3 seconds

Attack by type of defense

	Shots	9m	6m	Wing	TF	E7	E2
On def. 6-0	19/34	7/12	6/9	4/9	9	3	0
Fastbreak	2/4				0	0	0

Defense by type

	Total	9m	6m	Wing	Stl.	C7	2m
Def. 6-0	12/25	6/15	2/3	2/3	2	1	1
Def. 3-2-1	5/8	1/4	3/3	0/0	0	3	2
Fastbreak	1/3				0	0	0

Attack with goalkeeper out

	Attack				Reaction		
	Att.	Eff.	Shots	TF	FB	LD	Tot.
GK out (7 on 6)	1	0%	0/1	0	0/0	0/0	0/0
GK out pl. minority	3	33%	1/3	0	0/0	0/0	0/0
GK in	46	50%	23/39	9	1/3	0/1	1/4

GK out attack is counted if one part or whole attack was GK out

Defense with opponent goalkeeper out

	Attack				Reaction		
	Att.	Eff.	Shots	TF	FB	LD	Tot.
GK out (7 on 6)	2	0%	0/0	2	0/0	0/0	0/0
GK in	48	44%	21/40	10	2/4	1/1	3/5

Attack with player superiority/minority

	Attack				Reaction		
	Att.	Eff.	Shots	TF	FB	LD	Tot.
Superiority +1	4	50%	2/3	1	0/0	0/0	0/0
Normal	39	49%	19/34	7	1/3	0/0	1/3
Minority -1	5	20%	1/4	1	0/0	0/1	0/1

Player superiority counted at the end of attack (in case it changes during attack)

Defense with player superiority/minority

	Attack				Reaction		
	Att.	Eff.	Shots	TF	FB	LD	Tot.
Minority -1	7	57%	4/7	0	0/0	0/0	0/0
Normal	40	40%	16/32	10	2/4	1/1	3/5
Superiority +1	3	33%	1/2	1	0/0	0/0	0/0

Jersey number Tot. Total shooting 6m 6m (line) shooting 9m 9m shooting Wng Wing shooting FB Fastbreak sh. 7m 7m penalty sh.
 Brk. Breakthrough sh. LD Long distance sh. As. Assists PC Pass clear chance E7 Earned 7m pen. TF Technical faults St. Steals
 2m 2m punishments C7. Committed 7m E2 Earned 2m pun. YC. Yellow cards R/B Red/Blue cards Blk. Blocks S Starting Line-up



Super Globe Women

Wuxi (China)

Quarterfinal



IHF Women's Super Globe 2019

Match Team Statistics

Match No. 2

Kaysar Club 21 - 24 Chinese National C

(9 - 10) (12 - 14)

1.8.2019. 16:15

Attendance: 250

Wuxi Sports Hall

Referees: Ignacio Garcia (ESP) / Andreu Marin (ESP)

Shot distribution by player

2 Y. Lin

3 H. Zhang

3/3		

5 Y. Xin

6 Y. Huang

		1/1

1 block

10 X. Tian

1/1		1/1

14 X. Liu

2/2		
1/1		1/1
		1/1

1 block

19 M. Mo

21 J. Zhao

1/1		
		1/1

1 post 1 miss.

27 Y. Li

	1/1	
		1/1

28 R. Qiao

1/1		
1/1	1/1	2/2

1/1 lob

30 L. Zhou

34 M. Jin

2/2		

69 X. Lan

		1/1

93 T. Zhang

TOTAL

9/9		2/2
2/2	1/1	2/2
1/1	1/1	5/5

1 post 1 miss. 2 block 1/1 lob

Saves distribution goalkeepers

1 C. Lu

0/1		0/1
0/1		

22 Y. Yang

		0/2
0/1		0/3
0/5	0/2	0/4

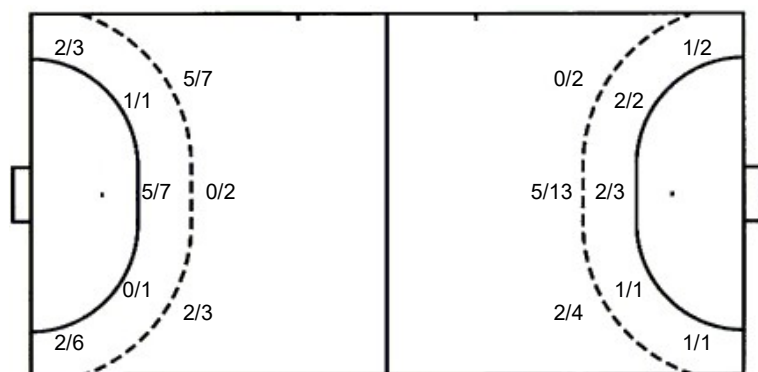
TOTAL

0/1		0/3
0/1		0/3
0/6	0/2	0/4

Shots by position

ATTACK

DEFENSE



7m penalties 2/4
Fastbreak 2/4
Breakthrough 2/4
Long dist. 1/1

7m penalties 3/4
Fastbreak 1/3
Breakthrough 3/5
Long dist. 0/1

Shooting statistics

Position	Goals	Sav.	Miss.	Post	Blk.	Total	%
Back (9m)	7	3	0	0	2	12	58
Line (6m)	6	3	0	0	0	9	67
Wing	4	5	0	0	0	9	44
7m penalties	2	1	1	0	0	4	50
Fastbreak	2	2	0	0	0	4	50
Breakthrough	2	1	0	1	0	4	50
Total	23	15	1	1	2	42	55

Jersey number Tot. Total shooting 6m 6m (line) shooting 9m 9m shooting Wng. Wing shooting FB Fastbreak sh. 7m 7m penalty sh.
Brk. Breakthrough sh. LD Long distance sh. As. Assists PC Pass clear chance E7 Earned 7m pen. TF Technical faults St. Steals
2m 2m punishments C7. Committed 7m E2 Earned 2m pun. YC. Yellow cards R/B Red/Blue cards Blk. Blocks S Starting Line-up

