



Super Globe Women

Wuxi (China)

Quarterfinal



Match Team Statistics
Match No. 1

OMRON 29 - 22 New York City
(14 - 9) (15 - 13)

1.8.2019. 14:00
Attendance:
Wuxi Sports Hall

Referees: Yufeng Cheng (CHN) / Yunlei Zhou (CHN)

OMRON

Players		Goals / shots										Attack					Def.			Penalties			TP		
#	Surname and name	S	Tot.	%	9m	6m	Wing	7m	FB	Brk.	LD	As.	PC	E7	E2	TF	St.	C7	Blk	YC	2m	R		B	
4	YOSHIDA Yukiko	S	8/12	67	2/3	0/1		2/4	1/1	3/3		1	2	1	1	2									41:59
5	TAKASUGI Momoka																								
6	ISHII Yuka	S	6/7	86	4/5					2/2		3				1	3								50:33
7	IWABUCHI Ikumi	S	2/8	25	1/6				1/2			3		1											57:16
8	NISHIO Runa		4/7	57	0/1		2/4		2/2			1				1	1								38:14
10	YAMASHITA Marina																								
11	OZAKI Kana	S	3/6	50			3/5		0/1								2								57:07
12	SHIROISHI Sato	S																							54:55
13	ETO Mika		1/2	50			1/2																		5:18
14	KAWAMATA Yukari	S	3/3	100		1/1			2/2			3		2	1	1	3		1	1					57:12
15	TAKEHARA Chika	S																							2:19
16	WATANABE Ayana																								3:21
18	IJICHI Miki		1/2	50	0/1				1/1																9:27
19	FUKUI Ayumi		1/2	50					1/2								2	1	1			1			42:19
	Team / bench																								
	UKUPNO		29/49	59	7/16	1/2	6/11	2/4	8/11	5/5	0/0	11	2	4	2	5	7	5	1	1	2	0	0		

Goalkeepers		Saves / shots									
#	Surname and name	Tot.	%	9m	6m	Wing	7m	FB	Brk.	LD	
12	SHIROISHI Sato	8/26	31	5/11	1/8	1/2	0/3	0/1	1/1		
16	WATANABE Ayana	0/4	0	0/2			0/2				
	TOTAL	8/30	27	5/13	1/8	1/2	0/5	0/1	1/1	0/0	

Coach: Yuki Mizuno

Number of attacks: 54, Efficiency: 54%, Average Duration: 19.7 seconds

Attack by type of defense

	Shots	9m	6m	Wing	TF	E7	E2
On def. 6-0	19/34	7/16	1/2	6/11	6	4	2
Fastbreak	8/11				0	0	0

Defense by type

	Total	9m	6m	Wing	Stl.	C7	2m
Def. 6-0	15/24	8/15	6/7	1/2	7	4	2
Def. 5-1	1/7	0/3	1/1	0/3	0	1	0
Def. 3-2-1	0/1	0/0	0/0	0/0	0	0	0
Fastbreak	1/1				0	0	0

Attack with goalkeeper out

	Attack				Reaction		
	Att.	Eff.	Shots	TF	FB	LD	Tot.
GK out (7 on 6)	1	100%	1/1	0	0/0	0/0	0/0
GK in	53	53%	28/48	6	1/1	0/0	1/1

GK out attack is counted if one part or whole attack was GK out

Defense with opponent goalkeeper out

	Attack				Reaction		
	Att.	Eff.	Shots	TF	FB	LD	Tot.
GK in	55	40%	22/38	16	8/11	0/0	8/11

Attack with player superiority/minority

	Attack				Reaction		
	Att.	Eff.	Shots	TF	FB	LD	Tot.
Superiority +2	1	100%	1/1	0	0/0	0/0	0/0
Superiority +1	3	67%	2/2	1	0/0	0/0	0/0
Normal	29	52%	15/29	1	1/1	0/0	1/1
Minority -1	4	50%	2/3	1	0/0	0/0	0/0

Player superiority counted at the end of attack (in case it changes during attack)

Defense with player superiority/minority

	Attack				Reaction		
	Att.	Eff.	Shots	TF	FB	LD	Tot.
Minority -1	4	75%	3/3	1	0/0	0/0	0/0
Normal	30	47%	14/22	7	4/6	0/0	4/6
Superiority +1	3	0%	0/1	2	1/1	0/0	1/1
Superiority +2	2	0%	0/1	1	0/0	0/0	0/0

Jersey number Tot. Total shooting 6m 6m (line) shooting 9m 9m shooting Wng Wing shooting FB Fastbreak sh. 7m 7m penalty sh.
Brk. Breakthrough sh. LD Long distance sh. As. Assists PC Pass clear chance E7 Earned 7m pen. TF Technical faults St. Steals
2m 2m punishments C7. Committed 7m E2 Earned 2m pun. YC. Yellow cards R/B Red/Blue cards Blk. Blocks S Starting Line-up



Super Globe Women

Wuxi (China)

Quarterfinal



Match Team Statistics
Match No. 1

OMRON 29 - 22 New York City
(14 - 9) (15 - 13)

1.8.2019. 14:00
Attendance:
Wuxi Sports Hall

Referees: Yufeng Cheng (CHN) / Yunlei Zhou (CHN)

Shot distribution by player

4 Y. Yoshida

1/1		1/1
2/2		4/4

2 post

5 M. Takasugi

6 Y. Ishii

	1/1	1/1
		2/2
	1/1	1/1

7 I. Iwabuchi

1/1		1/1

2 miss. 1 block

8 R. Nishio

1/1		1/1
2/2		

2 miss.

10 M. Yamashita

11 K. Ozaki

1/1		2/2

13 M. Eto

1/1		

1 post

14 Y. Kawamata

1/1		
1/1		
1/1		

15 C. Takehara

18 M. Ijichi

		1/1

1 post

19 A. Fukui

		1/1

1 post

TOTAL

3/3	1/1	3/3
2/2		3/3
7/7	1/1	9/9

5 post 4 miss. 1 block

Saves distribution goalkeepers

12 S. Shiroishi

0/3		0/1
0/3		0/1
0/6	0/1	0/3

16 A. Watanabe

0/2		0/2

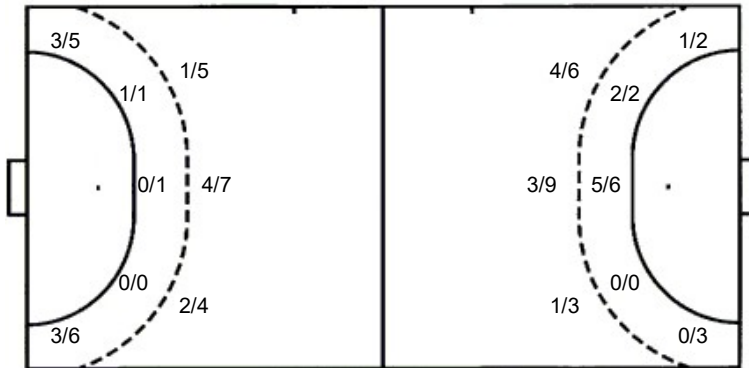
TOTAL

0/3		0/1
0/3		0/1
0/8	0/1	0/5

Shots by position

ATTACK

DEFENSE



7m penalties 2/4
Fastbreak 8/11
Breakthrough 5/5
Long dist. 0/0

7m penalties 5/5
Fastbreak 1/1
Breakthrough 0/1
Long dist. 0/0

Shooting statistics

Position	Goals	Sav.	Miss.	Post	Blk.	Total	%
Back (9m)	7	4	2	2	1	16	44
Line (6m)	1	1	0	0	0	2	50
Wing	6	2	2	1	0	11	55
7m penalties	2	1	0	1	0	4	50
Fastbreak	8	2	0	1	0	11	73
Breakthrough	5	0	0	0	0	5	100
Total	29	10	4	5	1	49	59

Jersey number Tot. Total shooting 6m 6m (line) shooting 9m 9m shooting Wng. Wing shooting FB Fastbreak sh. 7m 7m penalty sh.
 Brk. Breakthrough sh. LD Long distance sh. As. Assists PC Pass clear chance E7 Earned 7m pen. TF Technical faults St. Steals
 2m 2m punishments C7. Committed 7m E2 Earned 2m pun. YC. Yellow cards R/B Red/Blue cards Blk. Blocks S Starting Line-up



Super Globe Women
Wuxi (China)
Quarterfinal



Match Team Statistics
Match No. 1

OMRON 29 - 22 New York City
(14 - 9) (15 - 13)

1.8.2019. 14:00
Attendance:
Wuxi Sports Hall

Referees: Yufeng Cheng (CHN) / Yunlei Zhou (CHN)

New York City

#	Surname and name	S	Goals / shots								Attack					Def.			Penalties			TP			
			Tot.	%	9m	6m	Wing	7m	FB	Brk.	LD	As.	PC	E7	E2	TF	St.	C7	Blk	YC	2m		R	B	
1	SORENSEN Elisabeth Ouus																							19:46	
2	MICHAELSEN Signe Fangel	S	3/4	75	1/1		1/2			1/1								1						59:40	
3	MOYON Sarah	S																1		1				18:17	
4	HORTENSIUS Sem Robin													1										15:28	
5	ENGELSTOFT Maja Storm	S												1			3	1				1		45:41	
6	GAMTIS Louise	S	0/2	0			0/2							1			2							34:52	
7	KESLEROVA Zuzana		0/2	0	0/2									1	2	1	3					1		22:06	
8	MOSER Helen Laura	S	7/10	70	0/2	7/8								2							1			60:00	
9	KHATTAB Jasmien													2		1	2							14:19	
10	GUSTAFSSON Elsa Helena		1/4	25	1/3					0/1				5	1		4		1					21:01	
11	BALANCHE Cecile Marie	S	1/3	33	1/2		0/1							1			1	1						44:02	
12	SEVERIANO Daniela	S												1										40:14	
13	NIELSEN Cecilie Maria		5/5	100				5/5																1:03	
14	NIELSEN Maja Drud		5/8	63	5/8									2	3		1							23:31	
Team / bench																									
UKUPNO			22/38	58	8/18	7/8	1/5	5/5	1/1	0/1	0/0				9	9	5	1	17	1	4	1	1	2	0

#	Surname and name	Saves / shots								
		Tot.	%	9m	6m	Wing	7m	FB	Brk.	LD
1	SORENSEN Elisabeth Ouus	6/15	40	2/5	1/1	1/3	1/1	1/3	0/2	
12	SEVERIANO Daniela	4/24	17	2/6	0/1	1/5	0/2	1/7	0/3	
TOTAL		10/39	26	4/11	1/2	2/8	1/3	2/10	0/5	0/0

Coch: Pierre-Yves Coudrette

Number of attacks: 55, Efficiency: 40%, Average Duration: 46.1 seconds

Attack by type of defense

	Shots	9m	6m	Wing	TF	E7	E2
On def. 6-0	15/24	8/15	6/7	1/2	14	4	1
On def. 5-1	1/7	0/3	1/1	0/3	2	1	0
On def. 3-2-1	0/1	0/0	0/0	0/0	0	0	0
Fastbreak	1/1				0	0	0

Defense by type

	Total	9m	6m	Wing	Stl.	C7	2m
Def. 6-0	19/34	7/16	1/2	6/11	1	4	2
Fastbreak	8/11				0	0	0

Attack with goalkeeper out

	Attack				Reaction			
	Att.	Eff.	Shots	TF	FB	LD	Tot.	
GK in	55	40%	22/38	16	8/11	0/0	8/11	

GK out attack is counted if one part or whole attack was GK out

Defense with opponent goalkeeper out

	Attack				Reaction		
	Att.	Eff.	Shots	TF	FB	LD	Tot.
GK out (7 on 6)	1	100%	1/1	0	0/0	0/0	0/0
GK in	53	53%	28/48	6	1/1	0/0	1/1

Attack with player superiority/minority

	Attack				Reaction			
	Att.	Eff.	Shots	TF	FB	LD	Tot.	
Superiority +1	4	75%	3/3	1	0/0	0/0	0/0	
Normal	30	47%	14/22	7	4/6	0/0	4/6	
Minority -1	3	0%	0/1	2	1/1	0/0	1/1	
Minority -2	2	0%	0/1	1	0/0	0/0	0/0	

Player superiority counted at the end of attack (in case it changes during attack)

Defense with player superiority/minority

	Attack				Reaction		
	Att.	Eff.	Shots	TF	FB	LD	Tot.
Minority -2	1	100%	1/1	0	0/0	0/0	0/0
Minority -1	3	67%	2/2	1	0/0	0/0	0/0
Normal	29	52%	15/29	1	1/1	0/0	1/1
Superiority +1	4	50%	2/3	1	0/0	0/0	0/0

Jersey number Tot. Total shooting 6m 6m (line) shooting 9m 9m shooting Wng Wing shooting FB Fastbreak sh. 7m 7m penalty sh.
Brk. Breakthrough sh. LD Long distance sh. As. Assists PC Pass clear chance E7 Earned 7m pen. TF Technical faults St. Steals
2m 2m punishments C7. Committed 7m E2 Earned 2m pun. YC. Yellow cards R/B Red/Blue cards Blk. Blocks S Starting Line-up



Super Globe Women

Wuxi (China)

Quarterfinal



IHF Women's Super Globe
2019

Match Team Statistics
Match No. 1

OMRON 29 - 22 New York City

(14 - 9) (15 - 13)

1.8.2019. 14:00
Attendance:
Wuxi Sports Hall

Referees: Yufeng Cheng (CHN) / Yunlei Zhou (CHN)

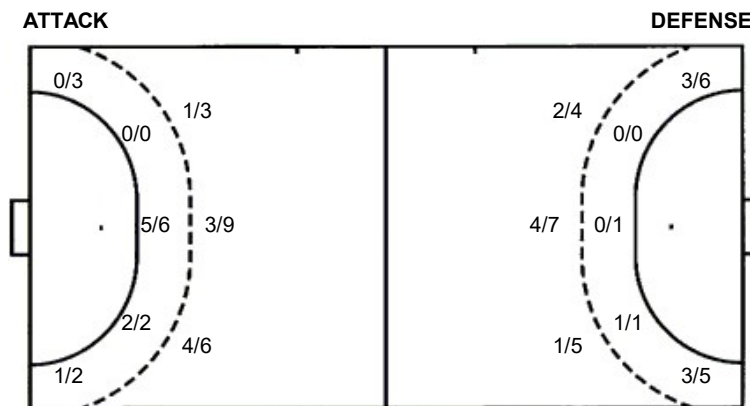
Shot distribution by player

2 S. Michaelsen	3 S. Moyon	4 S. Hortensius	5 M. Engelstoft	6 L. Gamtis	7 Z. Keslerova	8 H. Moser
1/1						2/2
						2/2
1/1						2/2
						1/1
				1 post 1 miss.	1 miss.	1 miss.
9 J. Khattab	10 E. Gustafsson	11 C. Balanche	13 C. Nielsen	14 M. Nielsen	TOTAL	
					3/3	1/1
					3/3	1/1
	1/1		1/1	1/1	8/8	1/1
			2/2	2/2	5/5	
	1 post 1 block	1 post		1 miss.	3 post 4 miss. 1 block	

Saves distribution goalkeepers

1 E. Sorensen	12 D. Severiano	TOTAL
	0/3 0/1 0/3	0/3 0/1 0/3
	0/2 0/3	0/2 0/3
0/3 0/1 0/5	0/4 0/4	0/7 0/1 0/9

Shots by position



Shooting statistics

Position	Goals	Sav.	Miss.	Post	Blk.	Total	%
Back (9m)	8	5	3	1	1	18	44
Line (6m)	7	1	0	0	0	8	88
Wing	1	1	1	2	0	5	20
7m penalties	5	0	0	0	0	5	100
Fastbreak	1	0	0	0	0	1	100
Breakthrough	0	1	0	0	0	1	0
Total	22	8	4	3	1	38	58

7m penalties 5/5
Fastbreak 1/1
Breakthrough 0/1
Long dist. 0/0

7m penalties 2/4
Fastbreak 8/11
Breakthrough 5/5
Long dist. 0/0

Jersey number **Tot.** Total shooting **6m** 6m (line) shooting **9m** 9m shooting **Wng.** Wing shooting **FB** Fastbreak sh. **7m** 7m penalty sh.
Brk. Breakthrough sh. **LD** Long distance sh. **As.** Assists **PC** Pass clear chance **E7** Earned 7m pen. **TF** Technical faults **St.** Steals
2m 2m punishments **C7.** Committed 7m **E2** Earned 2m pun. **YC.** Yellow cards **R/B** Red/Blue cards **Blk.** Blocks **S** Starting Line-up

