



Super Globe Women

Wuxi (China)

Final



IHF Women's Super Globe
2019

Match Team Statistics

Chinese National Club 22 - 27 Agosto Luanda

4.8.2019. 20:45

Match No. 12

(10 - 13) (12 - 14)

Attendance:

Wuxi Sports Hall

Referees: Viktoriia Alpaidze (RUS) / Tatiana Berzkina (RUS)

Chinese National Club

Players		Goals / shots									Attack					Def.			Penalties			TP			
#	Surname and name	S	Tot.	%	9m	6m	Wing	7m	FB	Brk.	LD	As.	PC	E7	E2	TF	St.	C7	Blk	YC	2m		R	B	
2	LIN Yan Qun		2/4	50	0/2				1/1	1/1			3	1	1	1	1								29:21
3	ZHANG Hai Xia		5/7	71		1/1	4/6									1									29:33
5	XIN Yan																	1			1				15:57
6	HUANG Yan		0/2	0	0/2											1									4:25
10	TIAN Xiu Xiu	S																							3:47
12	WANG Hai Ye																								21:03
14	LIU Xiao Mei	S	1/2	50	1/2																				11:09
19	MO Meng Meng	S															1	2							38:07
21	ZHAO Jia Qin		1/6	17	0/5					1/1		2		1		3	1								47:12
22	YANG Yu Rou	S																							34:45
27	LI Yao	S	2/5	40		0/2			2/2		0/1				1										59:22
28	QIAO Ru		2/2	100	1/1	1/1								3	3										49:54
29	ZHANG Yue																								
30	ZHOU Lei	S	1/1	100		1/1						1				1	1								30:00
34	JIN Meng Qing		8/13	62	0/4	1/1		6/7		1/1			1	2	1	2									16:30
69	LAN Xiao Ling	S	0/1	0	0/1							1				3	1	1	1	1					28:55
	Team / bench															1									
	UKUPNO		22/43	51	2/17	4/4	4/8	6/7	3/3	3/3	0/1	7	2	7	6	13	3	4	1	1	2	0	0		

Goalkeepers		Saves / shots								
#	Surname and name	Tot.	%	9m	6m	Wing	7m	FB	Brk.	LD
12	WANG Hai Ye	4/14	29	2/6			1/2	0/1	0/3	1/2
22	YANG Yu Rou	8/25	32	3/6	0/1	3/7	0/2		2/9	
	TOTAL	12/39	31	5/12	0/1	3/7	1/4	0/1	2/12	1/2

Coach: **Jorn-Uwe Lommel**

Number of attacks: 52, Efficiency: 42%, Average Duration: 35.3 seconds

Attack by type of defense

	Shots	9m	6m	Wing	TF	E7	E2
On def. 6-0	10/26	1/14	2/2	4/7	7	5	4
On def. 5-1	3/6	1/3	2/2	0/1	6	2	2
Fastbreak	3/3				0	0	0

Defense by type

	Total	9m	6m	Wing	Stl.	C7	2m
Def. 6-0	13/20	5/8	0/1	2/5	2	4	2
Def. 5-1	4/8	1/4	1/1	0/0	1	0	0
Def. 4-2	4/6	1/2	0/0	2/2	0	0	0
Def. 3-2-1	1/1	0/0	0/0	0/0	0	0	0
Fastbreak	1/1				0	0	0

Attack with goalkeeper out

	Attack				Reaction		
	Att.	Eff.	Shots	TF	FB	LD	Tot.
GK out (7 on 6)	2	50%	1/1	1	0/0	0/0	0/0
GK in	50	42%	21/42	12	1/1	1/3	2/4

GK out attack is counted if one part or whole attack was GK out

Attack with player superiority/minority

	Attack				Reaction		
	Att.	Eff.	Shots	TF	FB	LD	Tot.
Superiority +2	3	67%	2/3	0	0/0	0/0	0/0
Superiority +1	10	60%	6/9	1	0/0	0/0	0/0
Normal	28	36%	10/21	10	1/1	1/3	2/4
Minority -1	2	50%	1/2	0	0/0	0/0	0/0

Player superiority counted at the end of attack (in case it changes during attack)

Defense with opponent goalkeeper out

	Attack				Reaction		
	Att.	Eff.	Shots	TF	FB	LD	Tot.
GK out (7 on 6)	0	0%	0/0	0	0/0	0/0	0/0
GK in	52	52%	27/43	8	3/3	0/1	3/4

Defense with player superiority/minority

	Attack				Reaction		
	Att.	Eff.	Shots	TF	FB	LD	Tot.
Minority -1	3	33%	1/2	1	0/0	0/0	0/0
Normal	28	50%	14/22	4	2/2	0/0	2/2
Superiority +1	10	50%	5/9	0	0/0	0/1	0/1
Superiority +2	2	50%	1/2	0	0/0	0/0	0/0

Jersey number Tot. Total shooting 6m 6m (line) shooting 9m 9m shooting Wng Wing shooting FB Fastbreak sh. 7m 7m penalty sh.
 Brk. Breakthrough sh. LD Long distance sh. As. Assists PC Pass clear chance E7 Earned 7m pen. TF Technical faults St. Steals
 2m 2m punishments C7. Committed 7m E2 Earned 2m pun. YC. Yellow cards R/B Red/Blue cards Blk. Blocks S Starting Line-up



Super Globe Women

Wuxi (China)

Final



IHF Women's Super Globe 2019

Match Team Statistics

Chinese National Club 22 - 27 Agosto Luanda

4.8.2019. 20:45

Match No. 12

(10 - 13) (12 - 14)

Attendance:

Wuxi Sports Hall

Referees: Viktoriia Alpaidze (RUS) / Tatiana Berzkina (RUS)

Shot distribution by player

2 Y. Lin

1/1		1/1

1 block

3 H. Zhang

1/1		
1/1		
2/2		

1/1 lob

5 Y. Xin

6 Y. Huang

1 post

10 X. Tian

14 X. Liu

		1/1

19 M. Mo

21 J. Zhao

1/1		

2 post 1 miss. 1 block

27 Y. Li

1/1		1/1

1 post 1 miss.

28 R. Qiao

2/2		

29 Y. Zhang

30 L. Zhou

		1/1

34 M. Jin

		2/2
2/2	1/1	3/3

1 miss. 2 block

69 X. Lan

TOTAL

1/1		3/3
1/1		
9/9	1/1	6/6

4 post 3 miss. 4 block 1/1 lob

Saves distribution goalkeepers

12 H. Wang

0/1	0/1	0/3
0/1		
0/2	0/1	0/1

22 Y. Yang

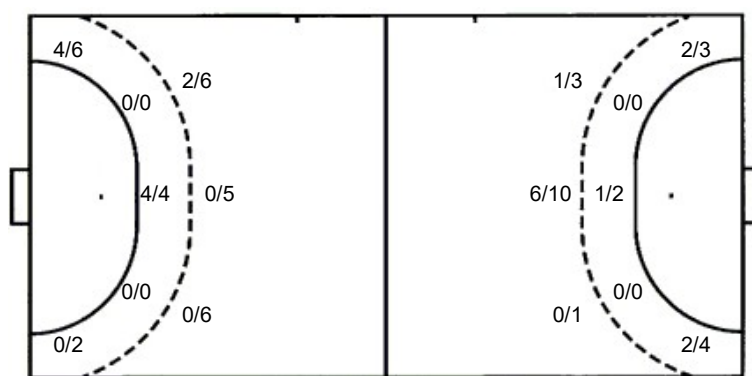
0/1		0/1
0/4		0/2
0/7		0/2

TOTAL

0/2	0/1	0/4
0/5		0/2
0/9	0/1	0/3

Shots by position

ATTACK



7m penalties 6/7
Fastbreak 3/3
Breakthrough 3/3
Long dist. 0/1

7m penalties 3/4
Fastbreak 1/1
Breakthrough 10/12
Long dist. 1/3

Shooting statistics

Position	Goals	Sav.	Miss.	Post	Blk.	Total	%
Back (9m)	2	6	2	3	4	17	12
Line (6m)	4	0	0	0	0	4	100
Wing	4	3	0	1	0	8	50
7m penalties	6	1	0	0	0	7	86
Fastbreak	3	0	0	0	0	3	100
Breakthrough	3	0	0	0	0	3	100
Total	22	10	2	4	4	42	52

Jersey number Tot. Total shooting 6m 6m (line) shooting 9m 9m shooting Wng. Wing shooting FB Fastbreak sh. 7m 7m penalty sh.
Brk. Breakthrough sh. LD Long distance sh. As. Assists PC Pass clear chance E7 Earned 7m pen. TF Technical faults St. Steals
2m 2m punishments C7. Committed 7m E2 Earned 2m pun. YC. Yellow cards R/B Red/Blue cards Blk. Blocks S Starting Line-up



Super Globe Women

Wuxi (China)

Final



IHF Women's Super Globe
2019

Match Team Statistics

Chinese National Club 22 - 27 Agosto Luanda

4.8.2019. 20:45

Match No. 12

(10 - 13) (12 - 14)

Attendance:

Wuxi Sports Hall

Referees: Viktoriia Alpaidze (RUS) / Tatiana Berzkina (RUS)

Agosto Luanda

Players		Goals / shots										Attack					Def.			Penalties			TP				
#	Surname and name	S	Tot.	%	9m	6m	Wing	7m	FB	Brk.	LD	As.	PC	E7	E2	TF	St.	C7	Blk	YC	2m	R		B			
3	DA SILVA Iracelma																							1			17:43
4	PAULO Helena Gilda Simao	S	10/14	71	2/5			3/3		4/5	1/1	1				2		1				1	1				45:04
6	MACHADO Juliana		1/1	100						1/1						1	1								1		14:50
8	JOAO Ruth Francisco																										
9	BERNARDO Natalia																										0:45
10	SILVA Vilma	S	1/1	100			1/1																				14:54
11	KASSOMA Albertina	S	1/4	25	0/1	1/2				0/1					3	2			1	1							54:52
12	LIOVERAS Eleneidys	S														1											52:07
15	VENANCIO Liliana		1/1	100					1/1										1	2					2		37:29
16	SOUSA Helena																										2:45
18	JOSE Claudete	S	2/4	50			2/4																				32:58
19	DOMBAXI Wuta	S	0/3	0	0/1							0/2					1	3	2						1		48:10
20	PINTO Amalia																										0:46
23	MWASESA Cristiane	S	7/9	78	3/4			0/1		4/4					1	2											32:30
31	SANTOS Janete		1/2	50			1/2												1	1					1		41:51
90	GUILAO Isabel		3/4	75	2/3					1/1							1	1	1								23:16
	Team / bench																										
	UKUPNO		27/43	63	7/14	1/2	4/7	3/4	1/1	10/12	1/3	2	0	4	2	8	5	7	4	1	7	0	0				

Goalkeepers		Saves / shots									
#	Surname and name	Tot.	%	9m	6m	Wing	7m	FB	Brk.	LD	
12	LIOVERAS Eleneidys	6/19	32	4/5	0/3	2/3	0/2	0/3	0/3		
16	SOUSA Helena	3/10	30	2/2	0/1	1/4	0/3				
20	PINTO Amalia	1/3	33	0/1			1/2				
	TOTAL	10/32	31	6/8	0/4	3/7	1/7	0/3	0/3	0/0	

Coach: Morten Soubak

Number of attacks: 53, Efficiency: 51%, Average Duration: 33.3 seconds

Attack by type of defense

	Shots	9m	6m	Wing	TF	E7	E2
On def. 6-0	13/20	5/8	0/1	2/5	5	4	2
On def. 5-1	4/8	1/4	1/1	0/0	0	0	0
On def. 4-2	4/6	1/2	0/0	2/2	3	0	0
On def. 3-2-1	1/1	0/0	0/0	0/0	0	0	0
Fastbreak	1/1				0	0	0

Attack with goalkeeper out

	Attack				Reaction		
	Att.	Eff.	Shots	TF	FB	LD	Tot.
GK out pl. minority	1	0%	0/0	0	0/0	0/0	0/0
GK in	52	52%	27/43	8	3/3	0/1	3/4

GK out attack is counted if one part or whole attack was GK out

Attack with player superiority/minority

	Attack				Reaction		
	Att.	Eff.	Shots	TF	FB	LD	Tot.
Superiority +1	3	33%	1/2	1	0/0	0/0	0/0
Normal	28	50%	14/22	4	2/2	0/0	2/2
Minority -1	10	50%	5/9	0	0/0	0/1	0/1
Minority -2	2	50%	1/2	0	0/0	0/0	0/0

Player superiority counted at the end of attack (in case it changes during attack)

Defense by type

	Total	9m	6m	Wing	Stl.	C7	2m
Def. 6-0	10/26	1/14	2/2	4/7	4	5	5
Def. 5-1	3/6	1/3	2/2	0/1	1	2	2
Fastbreak	3/3				0	0	0

Defense with opponent goalkeeper out

	Attack				Reaction		
	Att.	Eff.	Shots	TF	FB	LD	Tot.
GK out (7 on 6)	2	50%	1/1	1	0/0	0/0	0/0
GK out pl. super.	0	0%	0/0	0	0/0	0/0	0/0
GK in	50	42%	21/42	12	1/1	1/3	2/4

Defense with player superiority/minority

	Attack				Reaction		
	Att.	Eff.	Shots	TF	FB	LD	Tot.
Minority -2	3	67%	2/3	0	0/0	0/0	0/0
Minority -1	10	60%	6/9	1	0/0	0/0	0/0
Normal	28	36%	10/21	10	1/1	1/3	2/4
Superiority +1	2	50%	1/2	0	0/0	0/0	0/0

Jersey number Tot. Total shooting 6m 6m (line) shooting 9m 9m shooting Wng Wing shooting FB Fastbreak sh. 7m 7m penalty sh.
 Brk. Breakthrough sh. LD Long distance sh. As. Assists PC Pass clear chance E7 Earned 7m pen. TF Technical faults St. Steals
 2m 2m punishments C7. Committed 7m E2 Earned 2m pun. YC. Yellow cards R/B Red/Blue cards Blk. Blocks S Starting Line-up



Super Globe Women

Wuxi (China)

Final



IHF Women's Super Globe
2019

Match Team Statistics

Chinese National Club 22 - 27 Agosto Luanda

4.8.2019. 20:45

Match No. 12

(10 - 13) (12 - 14)

Attendance:

Wuxi Sports Hall

Referees: Viktoriia Alpaidze (RUS) / Tatiana Berzkina (RUS)

Shot distribution by player

3 I. Da Silva

4 H. Paulo

1/1		
3/3		
4/4	1/1	1/1

1 miss.

6 J. Machado

1/1		

8 R. Joao

9 N. Bernardo

10 V. Silva

		1/1

11 A. Kassoma

		1/1

1 miss.

15 L. Venancio

		1/1

18 C. Jose

		1/1
1/1		

19 W. Dombaxi

1 miss.

23 C. Mwasesa

	1/1	
2/2		1/1
3/3		

1 block

31 J. Santos

		1/1

90 I. Guilao

1/1		2/2

TOTAL

2/2	1/1	4/4
5/5		2/2
9/9	1/1	3/3

3 miss. 1 block

Saves distribution goalkeepers

12 E. Lioveras

		0/2
0/5	0/1	0/4

16 H. Sousa

0/1		
0/1		
0/3		0/2

20 A. Pinto

		0/1
0/1		

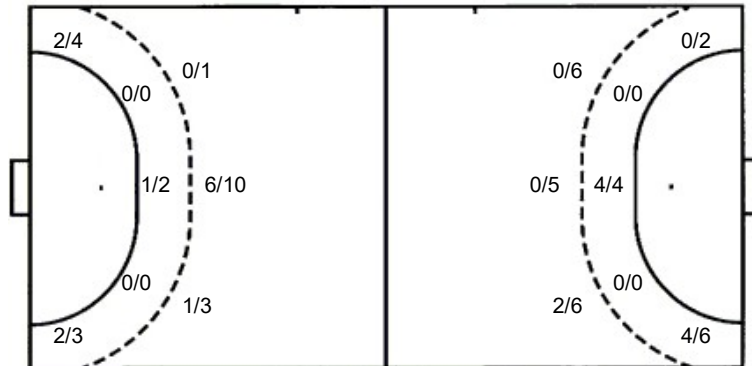
TOTAL

0/1		0/3
0/1		
0/9	0/1	0/6

Shots by position

ATTACK

DEFENSE



7m penalties 3/4

Fastbreak 1/1

Breakthrough 10/12

Long dist. 1/3

7m penalties 6/7

Fastbreak 3/3

Breakthrough 3/3

Long dist. 0/1

Shooting statistics

Position	Goals	Sav.	Miss.	Post	Blk.	Total	%
Back (9m)	7	5	1	0	1	14	50
Line (6m)	1	0	1	0	0	2	50
Wing	4	3	0	0	0	7	57
7m penalties	3	1	0	0	0	4	75
Fastbreak	1	0	0	0	0	1	100
Breakthrough	10	2	0	0	0	12	83
Total	26	11	2	0	1	40	65

Jersey number Tot. Total shooting 6m 6m (line) shooting 9m 9m shooting Wng. Wing shooting FB Fastbreak sh. 7m 7m penalty sh.
 Brk. Breakthrough sh. LD Long distance sh. As. Assists PC Pass clear chance E7 Earned 7m pen. TF Technical faults St. Steals
 2m 2m punishments C7. Committed 7m E2 Earned 2m pun. YC. Yellow cards R/B Red/Blue cards Blk. Blocks S Starting Line-up



Super Globe Women

Wuxi (China)

Final



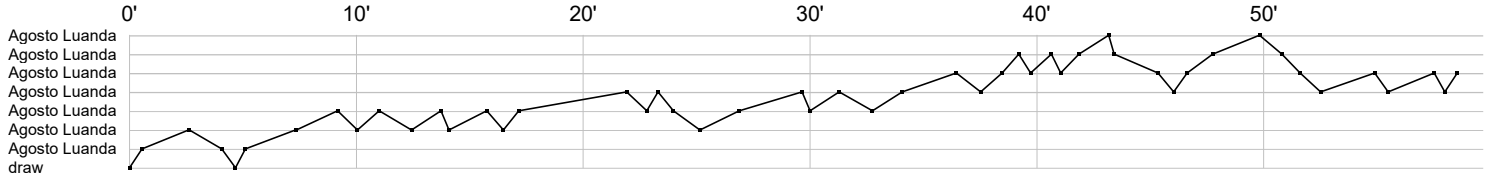
IHF Women's Super Globe
2019

Match Team Statistics
Match No. 12

Chinese National Club 22 - 27 Agosto Luanda
(10 - 13) (12 - 14)

4.8.2019. 20:45
Attendance:
Wuxi Sports Hall

Referees: Viktoriia Alpaidze (RUS) / Tatiana Berzkina (RUS)



Chinese National Club

2 Lin Y		ei g		f p g t					a a		f				a	
3 Zhang H					t g		g		g f						g g f	
5 Xin Y									c						2	
6 Huang Y		f		f	t											
10 Tian X																
12 Wang H					r r s	r s r	r r s r s		r r r							
14 Liu X		g f														
19 Mo M		b						c c								
21 Zhao J		f		b t g		e	f		t t		f				f a a	f
22 Yang Y		r r r	r s r	r	sr s r r					r		r s s r r	r	s s r	r r s	
27 Li Y		g			f					f	i g					f
28 Qiao R				i		i e		e		ei	g					g
29 Zhang Y																
30 Zhou L		a				g bt										
34 Jin M				f g	t g f		f g		g		g	p g	ef		f	g
69 Lan X		cy		x				2		a	t	f	t t			

Agosto Luanda

3 Da Silva I															2	
4 Paulo H		g y g		f g		fg		f		g t f		g g a g g		g		t c2
6 Machado J					2		t		b					g		
8 Joao R																
9 Bernardo N																
10 Silva V																g
11 Kassoma A		e				i		f		c f e e				x		i g f
12 Lioveras E		r r tss	r	r sr			s r r r							r s	r r r s r	
15 Venancio L				x2		c		2			g				x	
16 Sousa H						r			r s r	s r r	r s r					
18 Jose C			g	g										f f		
19 Dombaxi W		t		f		c		bf b		b f	c2					
20 Pinto A												s r				r
23 Mwasesa C		t g	f			g g			e f		g	g g g g t				
31 Santos J				c2		x									f g	
90 Guilao I								g t g g				c			f	ab

In game g Goal scored f Missed shot a Assist t Technical faults b Steal
 2 2min suspension e Earned 7m c Committed 7m y Yellow card r Red Card k Blue card
 i Earned 2min. x Block 4 4min suspension p Pass for clear chance s Saved shot r Received goal