



Super Globe Women

Wuxi (China)

Placement Match 3-4



IHF Women's Super Globe
2019

Match Team Statistics

Match No. 11

OMRON 32 - 35 A.A. UnC Concord

(17 - 17) (15 - 18)

4.8.2019. 18:30

Attendance:

Wuxi Sports Hall

Referees: Yufeng Cheng (CHN) / Yunlei Zhou (CHN)

OMRON

Players		Goals / shots									Attack				Def.			Penalties			TP				
#	Surname and name	S	Tot.	%	9m	6m	Wing	7m	FB	Brk.	LD	As.	PC	E7	E2	TF	St.	C7	Blk	YC		2m	R	B	
4	YOSHIDA Yukiko	S	9/13	69	2/4		1/1	4/5		2/3		1				1	2								48:25
5	TAKASUGI Momoka																								
6	ISHII Yuka	S	4/7	57	1/2					2/3	1/2	3		2		3		1							59:10
7	IWABUCHI Ikumi	S	5/9	56	2/6					3/3		1	1	2		1	1								56:44
8	NISHIO Runa	S	2/3	67	1/1		0/1		1/1			1	1	1											42:50
10	YAMASHITA Marina																								
11	OZAKI Kana	S	5/7	71			4/6		1/1						2										57:20
12	SHIROISHI Sato	S																							44:03
13	ETO Mika																								
14	KAWAMATA Yukari	S	4/7	57	0/1	4/6						2		1		1		1							58:14
15	TAKEHARA Chika																								
16	WATANABE Ayana																								14:44
18	IJICHI Miki		2/2	100	2/2																				5:14
19	FUKUI Ayumi		1/2	50	0/1				1/1																33:16
	Team / bench																								
	UKUPNO		32/50	64	8/17	4/6	5/8	4/5	3/3	7/9	1/2	8	2	6	2	6	3	2	0	2	1	0	0		

Goalkeepers		Saves / shots								
#	Surname and name	Tot.	%	9m	6m	Wing	7m	FB	Brk.	LD
12	SHIROISHI Sato	1/29	3	0/13	0/5	0/2	1/3	0/1	0/3	0/2
16	WATANABE Ayana	3/10	30	1/5		1/3			0/1	1/1
	TOTAL	4/39	10	1/18	0/5	1/5	1/3	0/1	0/4	1/3

Coach: Yuki Mizuno

Number of attacks: 60, Efficiency: 53%, Average Duration: 27.2 seconds

Attack by type of defense

	Shots	9m	6m	Wing	TF	E7	E2
On def. 6-0	24/40	8/17	4/6	5/8	6	6	2
Fastbreak	3/3				0	0	0

Defense by type

	Total	9m	6m	Wing	Stl.	C7	2m
Def. 6-0	16/19	9/12	2/2	1/1	3	2	1
Def. 5-1	14/20	8/12	3/4	3/4	0	0	0
Fastbreak	1/1				0	0	0

Attack with goalkeeper out

	Attack				Reaction		
	Att.	Eff.	Shots	TF	FB	LD	Tot.
GK out (7 on 6)	5	60%	3/5	0	1/1	0/0	1/1
GK out pl. minority	3	0%	0/2	0	0/0	1/1	1/1
GK in	52	56%	29/43	6	0/0	1/2	1/2

GK out attack is counted if one part or whole attack was GK out

Defense with opponent goalkeeper out

	Attack				Reaction		
	Att.	Eff.	Shots	TF	FB	LD	Tot.
GK out (7 on 6)	10	80%	8/10	0	1/1	0/0	1/1
GK in	51	53%	27/35	12	2/2	1/2	3/4

Attack with player superiority/minority

	Attack				Reaction		
	Att.	Eff.	Shots	TF	FB	LD	Tot.
Superiority +1	7	71%	5/7	0	0/0	0/0	0/0
Normal	38	50%	19/32	3	1/1	0/1	1/2
Minority -1	4	25%	1/3	0	0/0	2/2	2/2

Player superiority counted at the end of attack (in case it changes during attack)

Defense with player superiority/minority

	Attack				Reaction		
	Att.	Eff.	Shots	TF	FB	LD	Tot.
Minority -1	4	75%	3/3	0	0/0	0/0	0/0
Normal	40	65%	26/34	5	2/2	1/2	3/4
Superiority +1	6	0%	0/2	3	0/0	0/0	0/0

Jersey number Tot. Total shooting 6m 6m (line) shooting 9m 9m shooting Wng Wing shooting FB Fastbreak sh. 7m 7m penalty sh.
 Brk. Breakthrough sh. LD Long distance sh. As. Assists PC Pass clear chance E7 Earned 7m pen. TF Technical faults St. Steals
 2m 2m punishments C7. Committed 7m E2 Earned 2m pun. YC. Yellow cards R/B Red/Blue cards Blk. Blocks S Starting Line-up



Super Globe Women

Wuxi (China)

Placement Match 3-4



IHF Women's Super Globe 2019

Match Team Statistics

Match No. 11

OMRON 32 - 35 A.A. UnC Concord

(17 - 17) (15 - 18)

4.8.2019. 18:30

Attendance:

Wuxi Sports Hall

Referees: Yufeng Cheng (CHN) / Yunlei Zhou (CHN)

Shot distribution by player

4 Y. Yoshida

2/2	2/2	5/5

1 block

5 M. Takasugi

6 Y. Ishii

		1/1
	1/1	2/2

1 miss.

7 I. Iwabuchi

1/1		1/1
1/1	2/2	

2 post

8 R. Nishio

2/2		

1 miss.

10 M. Yamashita

11 K. Ozaki

1/1	1/1	1/1
		1/1

1 post 1/1 lob

13 M. Eto

14 Y. Kawamata

1/1		
		1/1
1/1		

1 block 1/1 lob

15 C. Takehara

18 M. Ijichi

1/1		
	1/1	

19 A. Fukui

	1/1	

1 block

TOTAL

2/2	1/1	2/2
2/2		2/2
6/6	7/7	8/8

3 post 2 miss. 3 block 2/2 lob

Saves distribution goalkeepers

12 S. Shiroishi

0/6	0/1	0/4
		0/3
0/4	0/4	0/5

16 A. Watanabe

0/2		
0/1		
0/3		

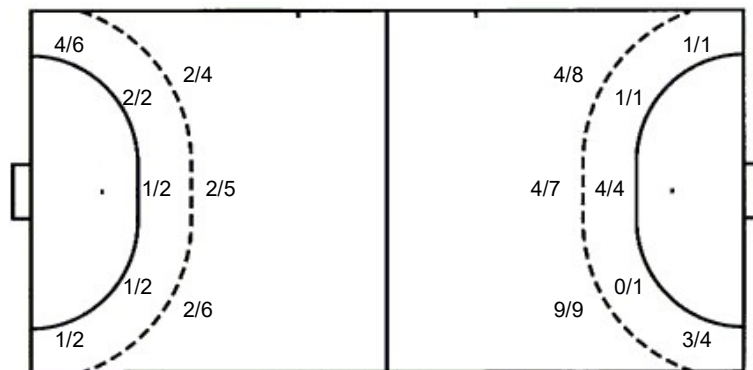
TOTAL

0/8	0/1	0/4
0/1		0/3
0/7	0/4	0/5

Shots by position

ATTACK

DEFENSE



7m penalties 4/5
Fastbreak 3/3
Breakthrough 7/9
Long dist. 1/2

7m penalties 2/3
Fastbreak 1/1
Breakthrough 4/4
Long dist. 2/3

Shooting statistics

Position	Goals	Sav.	Miss.	Post	Blk.	Total	%
Back (9m)	8	4	0	2	3	17	47
Line (6m)	4	2	0	0	0	6	67
Wing	5	1	1	1	0	8	63
7m penalties	4	1	0	0	0	5	80
Fastbreak	3	0	0	0	0	3	100
Breakthrough	7	1	1	0	0	9	78
Total	31	9	2	3	3	48	65

Jersey number Tot. Total shooting 6m 6m (line) shooting 9m 9m shooting Wng. Wing shooting FB Fastbreak sh. 7m 7m penalty sh.
Brk. Breakthrough sh. LD Long distance sh. As. Assists PC Pass clear chance E7 Earned 7m pen. TF Technical faults St. Steals
2m 2m punishments C7. Committed 7m E2 Earned 2m pun. YC. Yellow cards R/B Red/Blue cards Blk. Blocks S Starting Line-up



Super Globe Women

Wuxi (China)

Placement Match 3-4



IHF Women's Super Globe
2019

Match Team Statistics

Match No. 11

OMRON 32 - 35 A.A. UnC Concord

(17 - 17) (15 - 18)

4.8.2019. 18:30

Attendance:

Wuxi Sports Hall

Referees: Yufeng Cheng (CHN) / Yunlei Zhou (CHN)

A.A. UnC Concordia

Players		Goals / shots										Attack				Def.			Penalties			TP			
#	Surname and name	S	Tot.	%	9m	6m	Wing	7m	FB	Brk.	LD	As.	PC	E7	E2	TF	St.	C7	Blk	YC	2m		R	B	
1	VERONA ROTTA Luciane															1									31:25
2	KELLER MORCINECK Nadyne	S	2/2	100		2/2										3	2		1	1	1				51:48
3	MARIELLE ENGEL Eduarda																								
4	OLIVEIRA SOUSA Daise	S	8/12	67	6/9	0/1				2/2		4			1	1					1	1			54:53
6	M.C.F. CANATA MORINGO Sabrina	S	6/6	100		3/3		2/2			1/1				1	1	2								50:24
7	ISABEL BIEGER Aline	S													1										2:09
10	BELLA D CARMO MONTEIRO Barbarah																								
13	ALVES CARNEIRO Talita	S	10/14	71	7/10					2/2	1/2	1	1	1	1	1	1		1						59:18
14	R. GONCALVES PEREIRA Agda	S	6/8	75	2/2		3/4	0/1	1/1																60:00
15	AGUIAR CAMELO BORBA Ana Luiza																								1:38
19	SOUZA CAETANO BUCK Amanda																								
20	LIMA DIAS Maite	S																							16:01
22	SOTHE Francieli																								
73	PEREIRA COSTA Juliane																								
88	B. DO NASCIMENTO FELIX Jamily		1/1	100			1/1												1			1			37:07
99	MARTINS SCHNEIDER Tauani		2/3	67	2/3							7				4		2	1						55:17
	Team / bench																								
	UKUPNO		35/46	76	17/24	5/6	4/5	2/3	1/1	4/4	2/3	12	1	2	4	12	3	3	3	2	3	0	0		

Goalkeepers		Saves / shots									
#	Surname and name	Tot.	%	9m	6m	Wing	7m	FB	Brk.	LD	
1	VERONA ROTTA Luciane	10/33	30	4/10	2/6	1/4	1/3	0/1	1/7	1/2	
20	LIMA DIAS Maite	0/9	0	0/2		0/2	0/2	0/2	0/1		
	TOTAL	10/42	24	4/12	2/6	1/6	1/5	0/3	1/8	1/2	

Coach: **Alexandre Trevisan Schneider**

Number of attacks: 62, Efficiency: 56%, Average Duration: 31.8 seconds

Attack by type of defense

	Shots	9m	6m	Wing	TF	E7	E2
On def. 6-0	16/19	9/12	2/2	1/1	10	2	4
On def. 5-1	14/20	8/12	3/4	3/4	2	0	0
Fastbreak	1/1				0	0	0

Defense by type

	Total	9m	6m	Wing	Stl.	C7	2m
Def. 6-0	24/40	8/17	4/6	5/8	2	3	3
Def. 5-1	0/0	0/0	0/0	0/0	1	0	0
Fastbreak	3/3				0	0	0

Attack with goalkeeper out

	Attack				Reaction		
	Att.	Eff.	Shots	TF	FB	LD	Tot.
GK out (7 on 6)	10	80%	8/10	0	1/1	0/0	1/1
GK out pl. minority	1	0%	0/1	0	0/0	0/0	0/0
GK in	51	53%	27/35	12	2/2	1/2	3/4

GK out attack is counted if one part or whole attack was GK out

Attack with player superiority/minority

	Attack				Reaction		
	Att.	Eff.	Shots	TF	FB	LD	Tot.
Superiority +1	4	75%	3/3	0	0/0	0/0	0/0
Normal	40	65%	26/34	5	2/2	1/2	3/4
Minority -1	6	0%	0/2	3	0/0	0/0	0/0

Player superiority counted at the end of attack (in case it changes during attack)

Defense with opponent goalkeeper out

	Attack				Reaction		
	Att.	Eff.	Shots	TF	FB	LD	Tot.
GK out (7 on 6)	5	60%	3/5	0	1/1	0/0	1/1
GK in	52	56%	29/43	6	0/0	1/2	1/2

Defense with player superiority/minority

	Attack				Reaction		
	Att.	Eff.	Shots	TF	FB	LD	Tot.
Minority -1	7	71%	5/7	0	0/0	0/0	0/0
Normal	38	50%	19/32	3	1/1	0/1	1/2
Superiority +1	4	25%	1/3	0	0/0	2/2	2/2

Jersey number Tot. Total shooting 6m 6m (line) shooting 9m 9m shooting Wng Wing shooting FB Fastbreak sh. 7m 7m penalty sh.
 Brk. Breakthrough sh. LD Long distance sh. As. Assists PC Pass clear chance E7 Earned 7m pen. TF Technical faults St. Steals
 2m 2m punishments C7. Committed 7m E2 Earned 2m pun. YC. Yellow cards R/B Red/Blue cards Blk. Blocks S Starting Line-up



Super Globe Women

Wuxi (China)

Placement Match 3-4



IHF Women's Super Globe 2019

Match Team Statistics

Match No. 11

OMRON 32 - 35 A.A. UnC Concord

(17 - 17) (15 - 18)

4.8.2019. 18:30

Attendance:

Wuxi Sports Hall

Referees: Yufeng Cheng (CHN) / Yunlei Zhou (CHN)

Shot distribution by player

2 N. Keller Morcineck

	2/2	

3 E. Marielle Engel

4 D. Oliveira Sousa

3/3		1/1
		2/2
2/2		

2 post 1 miss.

6 S. M.C.F. Canata Moringo

2/2		
		1/1
	1/1	1/1

7 A. Isabel Bieger

10 B. Bella D carmo Monteiro

13 T. Alves Carneiro

3/3	1/1	2/2
1/1		
3/3		

1 post 2 miss.

14 A. R. Goncalves Pereira

2/2	1/1	2/2

1/1 lob

15 A. Aguiar Camelo Borba

19 A. Souza Caetano Buck

22 F. Sothe

73 J. Pereira Costa

88 J. B. do Nascimento Felix

	1/1	

99 T. Martins Schneider

		1/1
		1/1

1 miss.

TOTAL

8/8	1/1	4/4
1/1		3/3
7/7	4/4	5/5

3 post 4 miss. 1/1 lob

Saves distribution goalkeepers

1 L. Verona Rotta

0/2	0/1	0/1
0/2		0/2
0/4	0/3	0/6

20 M. Lima Dias

		0/1
0/2	0/4	0/2

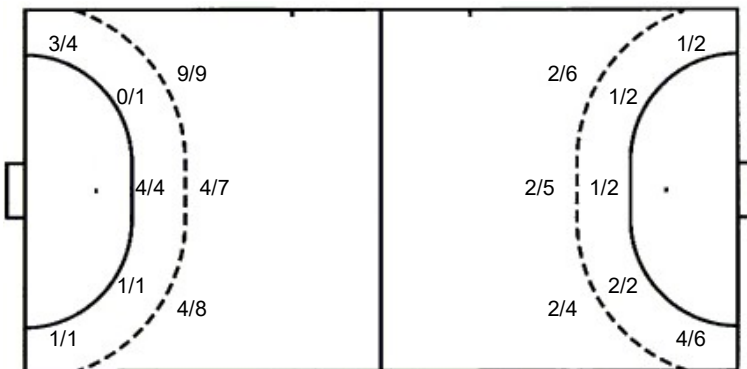
TOTAL

0/2	0/1	0/2
0/2		0/2
0/6	0/7	0/8

Shots by position

ATTACK

DEFENSE



7m penalties 2/3
Fastbreak 1/1
Breakthrough 4/4
Long dist. 2/3

7m penalties 4/5
Fastbreak 3/3
Breakthrough 7/9
Long dist. 1/2

Shooting statistics

Position	Goals	Sav.	Miss.	Post	Blk.	Total	%
Back (9m)	17	1	4	2	0	24	71
Line (6m)	5	0	0	1	0	6	83
Wing	4	1	0	0	0	5	80
7m penalties	2	1	0	0	0	3	67
Fastbreak	1	0	0	0	0	1	100
Breakthrough	4	0	0	0	0	4	100
Total	33	3	4	3	0	43	77

Jersey number Tot. Total shooting 6m 6m (line) shooting 9m 9m shooting Wng. Wing shooting FB Fastbreak sh. 7m 7m penalty sh.
Brk. Breakthrough sh. LD Long distance sh. As. Assists PC Pass clear chance E7 Earned 7m pen. TF Technical faults St. Steals
2m 2m punishments C7. Committed 7m E2 Earned 2m pun. YC. Yellow cards R/B Red/Blue cards Blk. Blocks S Starting Line-up

