



Super Globe Women

Wuxi (China)

Placement Match 5-6



IHF Women's Super Globe
2019

Match Team Statistics

Match No. 10

Kaysar Club 35 - 30 Jianguo Team

(18 - 15) (17 - 15)

4.8.2019. 16:15

Attendance:

Wuxi Sports Hall

Referees: Haidy Elsaied (EGY) / Yasmina Elsaied (EGY)

Kaysar Club

Players		Goals / shots									Attack				Def.			Penalties			TP				
#	Surname and name	S	Tot.	%	9m	6m	Wing	7m	FB	Brk.	LD	As.	PC	E7	E2	TF	St.	C7	Blk	YC		2m	R	B	
3	SITNIKOVA Mariya	S	2/2	100		2/2								1							1				37:43
4	REJEMETOVA Sevara	S	0/1	0			0/1									1		1							15:46
7	SYZDYKOVA Lunara		2/2	100			1/1			1/1						1									27:10
8	POLUYANKO Natalya		0/2	0		0/2																			3:10
9	PUPCHENKOVA Mariya		0/1	0			0/1																		2:22
10	YEGUNOVA Olga																								
11	ISKAKOVA Feruza																								6:40
12	AITENOVA Zhannat	S																							51:14
13	ILINA Natalya		3/4	75	2/2		1/1			0/1		2			1	2		1	3		1				53:40
14	KHARDINA Veronika	S	3/5	60	0/2		1/1		2/2			1			1	1			1						39:37
15	ABDIKHAMIT Arailym		1/1	100		1/1										1			2						17:35
16	DAVYDOVA Tatyana		0/1	0							0/1														7:41
17	ALEXANDROVA Irina	S	7/9	78	4/6			1/1		2/2		3	3			2	1	1	6						60:00
18	PIKALOVA Marina	S	10/14	71			8/12			1/1	1/1					1	1	1							56:51
44	STEPANOVA Kristina																								
96	ABILDA Dana	S	7/9	78	3/5			2/2	1/1	1/1		4		2	4		1		1						40:31
	Team / bench																								
	UKUPNO		35/51	69	9/15	3/5	11/17	3/3	3/3	5/6	1/2	10	3	3	6	9	3	4	13	0	2	0	0		

Goalkeepers		Saves / shots								
#	Surname and name	Tot.	%	9m	6m	Wing	7m	FB	Brk.	LD
12	AITENOVA Zhannat	8/35	23	7/17	0/1	0/6	1/4	0/1	0/6	
16	DAVYDOVA Tatyana	0/3	0	0/2		0/1				
	TOTAL	8/38	21	7/19	0/1	0/7	1/4	0/1	0/6	0/0

Coach: Vyacheslav Kim

Number of attacks: 60, Efficiency: 58%, Average Duration: 31.7 seconds

Attack by type of defense

	Shots	9m	6m	Wing	TF	E7	E2
On def. 6-0	15/27	6/10	1/3	7/12	7	3	5
On def. 5-1	2/3	0/1	0/0	0/0	0	0	0
On def. 3-2-1	11/13	3/4	2/2	4/5	2	0	1
Fastbreak	3/3				0	0	0

Defense by type

	Total	9m	6m	Wing	Stl.	C7	2m
Def. 6-0	25/46	12/33	1/1	6/6	2	4	2
Def. 5-1	1/4	0/3	0/0	1/1	0	0	0
Def. 3-2-1	0/0	0/0	0/0	0/0	1	0	0
Fastbreak	1/1				0	0	0

Attack with goalkeeper out

	Attack				Reaction		
	Att.	Eff.	Shots	TF	FB	LD	Tot.
GK out (7 on 6)	1	100%	1/1	0	0/0	0/0	0/0
GK in	59	58%	34/50	9	1/1	0/0	1/1

GK out attack is counted if one part or whole attack was GK out

Defense with opponent goalkeeper out

	Attack				Reaction		
	Att.	Eff.	Shots	TF	FB	LD	Tot.
GK out (7 on 6)	0	0%	0/0	0	0/0	0/0	0/0
GK in	57	49%	28/53	12	3/3	1/2	4/5

Attack with player superiority/minority

	Attack				Reaction		
	Att.	Eff.	Shots	TF	FB	LD	Tot.
Superiority +1	16	38%	6/13	4	0/0	0/0	0/0
Normal	31	65%	20/26	4	0/0	0/0	0/0
Minority -1	6	67%	4/6	0	1/1	0/0	1/1

Player superiority counted at the end of attack (in case it changes during attack)

Defense with player superiority/minority

	Attack				Reaction		
	Att.	Eff.	Shots	TF	FB	LD	Tot.
Minority -1	7	43%	3/4	3	0/0	0/0	0/0
Normal	30	50%	15/32	3	1/1	0/0	1/1
Superiority +1	15	47%	7/13	5	1/1	1/2	2/3

Jersey number Tot. Total shooting 6m 6m (line) shooting 9m 9m shooting Wng Wing shooting FB Fastbreak sh. 7m 7m penalty sh.
 Brk. Breakthrough sh. LD Long distance sh. As. Assists PC Pass clear chance E7 Earned 7m pen. TF Technical faults St. Steals
 2m 2m punishments C7. Committed 7m E2 Earned 2m pun. YC. Yellow cards R/B Red/Blue cards Blk. Blocks S Starting Line-up



Super Globe Women

Wuxi (China)

Placement Match 5-6



IHF Women's Super Globe 2019

Match Team Statistics

Match No. 10

Kaysar Club 35 - 30 Jiangsu Team

(18 - 15) (17 - 15)

4.8.2019. 16:15

Attendance:

Wuxi Sports Hall

Referees: Haidy Elsaied (EGY) / Yasmina Elsaied (EGY)

Shot distribution by player

3 M. Sitnikova

2/2		

4 S. Rejemetova

1 post

7 L. Syzdykova

	1/1	1/1

8 N. Poluyanko

9 M. Pupchenkova

10 O. Yegunova

11 F. Iskakova

13 N. Ilina

		2/2

1 miss. 1/1 lob

14 V. Khardina

1/1		1/1
		1/1

1 post 1 block

15 A. Abdikhamit

1/1		

17 I. Alexandrova

		1/1
1/1		2/2
1/1	1/1	

1 post 1/1 lob

18 M. Pikalova

1/1	3/3	

6/6 lob

44 K. Stepanova

96 D. Abilda

2/2		1/1
3/3		1/1

1 block

TOTAL

4/4		5/5
1/1		2/2
7/7	5/5	3/3

3 post 1 miss. 2 block 8/8 lob

Saves distribution goalkeepers

12 Z. Aitenova

0/1	0/1	0/1
		0/5
0/11	0/1	0/7

16 T. Davydova

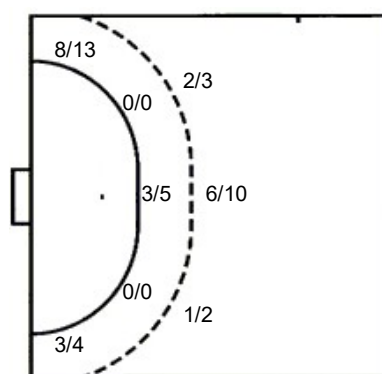
0/1	0/1	0/1

TOTAL

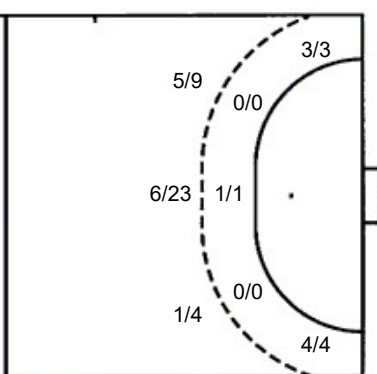
0/1	0/1	0/1
		0/5
0/12	0/2	0/8

Shots by position

ATTACK



DEFENSE



7m penalties 3/3
Fastbreak 3/3
Breakthrough 5/6
Long dist. 1/2

7m penalties 3/4
Fastbreak 1/1
Breakthrough 6/6
Long dist. 0/0

Shooting statistics

Position	Goals	Sav.	Miss.	Post	Blk.	Total	%
Back (9m)	9	2	0	2	2	15	60
Line (6m)	3	2	0	0	0	5	60
Wing	11	5	0	1	0	17	65
7m penalties	3	0	0	0	0	3	100
Fastbreak	3	0	0	0	0	3	100
Breakthrough	5	0	1	0	0	6	83
Total	34	9	1	3	2	49	69

Jersey number Tot. Total shooting 6m 6m (line) shooting 9m 9m shooting Wng. Wing shooting FB Fastbreak sh. 7m 7m penalty sh.
Brk. Breakthrough sh. LD Long distance sh. As. Assists PC Pass clear chance E7 Earned 7m pen. TF Technical faults St. Steals
2m 2m punishments C7. Committed 7m E2 Earned 2m pun. YC. Yellow cards R/B Red/Blue cards Blk. Blocks S Starting Line-up



Super Globe Women

Wuxi (China)

Placement Match 5-6



IHF Women's Super Globe
2019

Match Team Statistics

Match No. 10

Kaysar Club 35 - 30 Jiangsu Team

(18 - 15) (17 - 15)

4.8.2019. 16:15

Attendance:

Wuxi Sports Hall

Referees: Haidy Elsaied (EGY) / Yasmina Elsaied (EGY)

Jiangsu Team

Players		Goals / shots									Attack					Def.			Penalties			TP			
#	Surname and name	S	Tot.	%	9m	6m	Wing	7m	FB	Brk.	LD	As.	PC	E7	E2	TF	St.	C7	Blk	YC	2m		R	B	
1	SONG Chenxi	S																							40:07
5	WANG Dan	S	6/8	75	1/3			2/2		3/3		1		1		4		1					1		40:40
6	FENG Yang		5/7	71	0/1		3/3	0/1	1/1	1/1													1		53:23
7	SUN Jiao	S	1/1	100		1/1								2	1		1		1			2			56:54
10	WANG Keke		5/9	56	3/7		1/1			1/1		1		1					1						30:24
11	YU Yuanyuan	S	4/4	100			3/3	1/1								2									56:57
13	HUANG Huiying																								
14	XU Hanshu																								3:03
15	XIE Mingyue																								
17	WU Meiqi		0/3	0	0/3																				1:59
18	DAI Xiaoyu	S	2/6	33	1/5					1/1		1				1		1				1			33:23
19	JIAO Ya	S	0/1	0	0/1											1									11:59
21	GAO Yuanyuan		2/3	67	2/3										1	3							1		23:24
22	PENG Ruyu																								14:48
23	WANG Shuhui	S	5/13	38	5/13							1				1		1							38:22
28	LIANG Rong																						1		14:37
	Team / bench																								
	UKUPNO		30/55	55	12/36	1/1	7/7	3/4	1/1	6/6	0/0	4	0	4	2	12	1	3	2	1	6	0	0		

Goalkeepers		Saves / shots								
#	Surname and name	Tot.	%	9m	6m	Wing	7m	FB	Brk.	LD
1	SONG Chenxi	6/32	19	2/7	2/5	2/9	0/3	0/3	0/5	
22	PENG Ruyu	3/12	25	0/4		3/7				0/1
	TOTAL	9/44	20	2/11	2/5	5/16	0/3	0/3	0/5	0/1

Coach: Jiashu Kim

Number of attacks: 59, Efficiency: 51%, Average Duration: 28.8 seconds

Attack by type of defense

	Shots	9m	6m	Wing	TF	E7	E2
On def. 6-0	25/46	12/33	1/1	6/6	12	4	2
On def. 5-1	1/4	0/3	0/0	1/1	0	0	0
Fastbreak	1/1				0	0	0

Defense by type

	Total	9m	6m	Wing	Stl.	C7	2m
Def. 6-0	15/27	6/10	1/3	7/12	1	3	5
Def. 5-1	2/3	0/1	0/0	0/0	0	0	0
Def. 3-2-1	11/13	3/4	2/2	4/5	0	0	1
Fastbreak	3/3				0	0	0

Attack with goalkeeper out

	Attack				Reaction		
	Att.	Eff.	Shots	TF	FB	LD	Tot.
GK out pl. minority	2	100%	2/2	0	0/0	0/0	0/0
GK in	57	49%	28/53	12	3/3	1/2	4/5

GK out attack is counted if one part or whole attack was GK out

Defense with opponent goalkeeper out

	Attack				Reaction		
	Att.	Eff.	Shots	TF	FB	LD	Tot.
GK out (7 on 6)	1	100%	1/1	0	0/0	0/0	0/0
GK in	59	58%	34/50	9	1/1	0/0	1/1

Attack with player superiority/minority

	Attack				Reaction		
	Att.	Eff.	Shots	TF	FB	LD	Tot.
Superiority +1	7	43%	3/4	3	0/0	0/0	0/0
Normal	30	50%	15/32	3	1/1	0/0	1/1
Minority -1	15	47%	7/13	5	1/1	1/2	2/3

Player superiority counted at the end of attack (in case it changes during attack)

Defense with player superiority/minority

	Attack				Reaction		
	Att.	Eff.	Shots	TF	FB	LD	Tot.
Minority -1	16	38%	6/13	4	0/0	0/0	0/0
Normal	31	65%	20/26	4	0/0	0/0	0/0
Superiority +1	6	67%	4/6	0	1/1	0/0	1/1

Jersey number Tot. Total shooting 6m 6m (line) shooting 9m 9m shooting Wng Wing shooting FB Fastbreak sh. 7m 7m penalty sh.
 Brk. Breakthrough sh. LD Long distance sh. As. Assists PC Pass clear chance E7 Earned 7m pen. TF Technical faults St. Steals
 2m 2m punishments C7. Committed 7m E2 Earned 2m pun. YC. Yellow cards R/B Red/Blue cards Blk. Blocks S Starting Line-up



Super Globe Women

Wuxi (China)

Placement Match 5-6



IHF Women's Super Globe
2019

Match Team Statistics

Match No. 10

Kaysar Club 35 - 30 Jiangsu Team

(18 - 15) (17 - 15)

4.8.2019. 16:15

Attendance:

Wuxi Sports Hall

Referees: Haidy Elsaied (EGY) / Yasmina Elsaied (EGY)

Shot distribution by player

5 D. Wang

		1/1
4/4		1/1

1 post 1 block

6 Y. Feng

		1/1
4/4		

7 J. Sun

		1/1

10 K. Wang

		2/2
1/1	1/1	1/1

1 miss.

11 Y. Yu

1/1	1/1	
1/1		1/1

13 H. Huang

14 H. Xu

15 M. Xie

17 M. Wu

3 block

18 X. Dai

1/1		1/1

3 block

19 Y. Jiao

21 Y. Gao

1/1		1/1

1 post

23 S. Wang

		1/1
		1/1
	1/1	2/2

1 miss. 6 block

28 R. Liang

TOTAL

1/1	1/1	1/1
		5/5
12/12	2/2	8/8

2 post 2 miss. 13 block

Saves distribution goalkeepers

1 C. Song

0/4		0/3
0/1		0/2
0/5	0/4	0/3

22 R. Peng

		0/2
0/2	0/1	

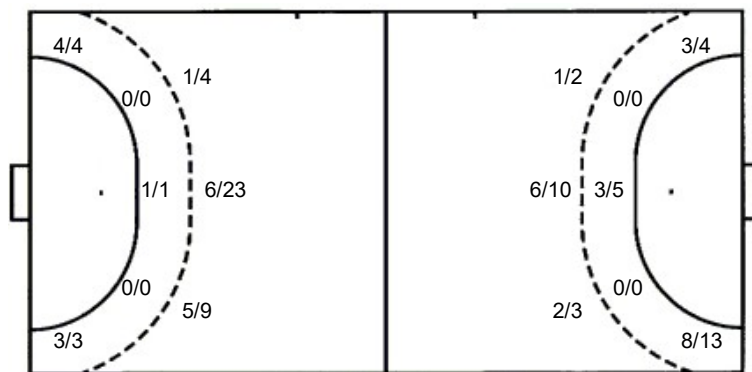
TOTAL

0/4		0/5
0/1		0/2
0/7	0/5	0/3

Shots by position

ATTACK

DEFENSE



7m penalties 3/4
Fastbreak 1/1
Breakthrough 6/6
Long dist. 0/0

7m penalties 3/3
Fastbreak 3/3
Breakthrough 5/6
Long dist. 1/2

Shooting statistics

Position	Goals	Sav.	Miss.	Post	Blk.	Total	%
Back (9m)	12	7	2	2	13	36	33
Line (6m)	1	0	0	0	0	1	100
Wing	7	0	0	0	0	7	100
7m penalties	3	1	0	0	0	4	75
Fastbreak	1	0	0	0	0	1	100
Breakthrough	6	0	0	0	0	6	100
Total	30	8	2	2	13	55	55

Jersey number Tot. Total shooting 6m 6m (line) shooting 9m 9m shooting Wng. Wing shooting FB Fastbreak sh. 7m 7m penalty sh.
Brk. Breakthrough sh. LD Long distance sh. As. Assists PC Pass clear chance E7 Earned 7m pen. TF Technical faults St. Steals
2m 2m punishments C7. Committed 7m E2 Earned 2m pun. YC. Yellow cards R/B Red/Blue cards Blk. Blocks S Starting Line-up

