

第十四届全运会女子手球资格赛暨2021年“体彩杯”全国女子手球冠军杯赛

万州

Preliminary

FTR
Match NO.1

广东 46.0 - 23.0 四川
(22.5-10.0)(23.5-13.0)

2021-05-21 13:00
万州体育馆

Referees: 王羚(CHN) / 谷瑶(CHN)

广东

Players		Goals/shots										Attack			Defense			Penalties			TP			
#	Surname and name	Tot.	%	9m	6m	Wing	7m	Fst.	Brk.	FT	LD	As.	PC	E7	OF	St.	C7	Blk	W	2m		D	Dr	
2	唐悦	3/8	37.5	1/2			0/1	1/2	1/2		0/1				2									10:22
3	陈硕	3/5	60	1/1	2/2	0/1			0/1			1												03:26
5	张宇	1/3	33.33		0/2			1/1									1		1					21:05
6	姚香凝	4/6	66.67			4/5			0/1					2						1				17:14
7	王戈	2/2	100					2/2							1									32:05
8	李诗棋	1/1	100					1/1																25:56
9	韦娜娜	6/8	75	2/3				3/3	1/2			2		1	1									17:29
13	杨慧	3/3	100	1/1		1/1		1/1						1		1		4						25:54
15	周亚茹	4/4	100					2/2	2/2						1		1							27:59
19	董雪	3/7	42.86		2/4			1/3																13:37
26	杨丽丽										1													15:44
27	韦秋花	2/2	100			1/1		1/1						1										00:05
28	叶飞雪	4/4	100		2/2	1/1		1/1				1						1						17:32
29	韦宝桂	0/2	0		0/1		0/1						2					1						07:01
32	刘晓玉														1									14:16
33	马琳	3/5	60	1/1			1/1	0/1	1/2						1		1		1					26:13
	Total	39/60	65	6/8	6/11	7/9	1/3	14/18	5/10		0/1	5	2	2	9	2	3	6	2	1				04:35:58

Goalkeepers		Saves / shots										TP
#	Surname and name	Tot.	%	9m	6m	Wing	7m	Fst.	Brk.	FT	LD	
26	杨丽丽	14/33	42.42	5/7	0/1	5/11	0/3	0/1	4/10			15:44
32	刘晓玉	4/7	57.14	1/1		0/1		0/1	3/4			14:16
	Total	18/40	45	6/8	0/1	5/12	0/3	0/2	7/14			00:30:00

Jersey number Tot. Total shooting 6m 6m shooting 9m 9m shooting Wing Wing shooting Fst Fastbreak 7m 7m Throw
 Brk. Breakthrough LD Long distance shooting As. Assists E7 Earned 7m St. Steals 2m 2-minute suspension C7. Received 7m
 D Disqualification Dr Disqualification+Report FT Free Throw PC Pass clear chance OF Offensiven Foul TP Time played W warning
 Blk. Block

第十四届全运会女子手球资格赛暨2021年“体彩杯”全国女子手球冠军杯赛

万州
Preliminary

Match Team Statistics
Match NO.1

广东 46.0 - 23.0 四川
(22.5-10.0)(23.5-13.0)

2021-05-21 13:00
万州体育馆

Referees: 王羚(CHN) / 谷瑶(CHN)

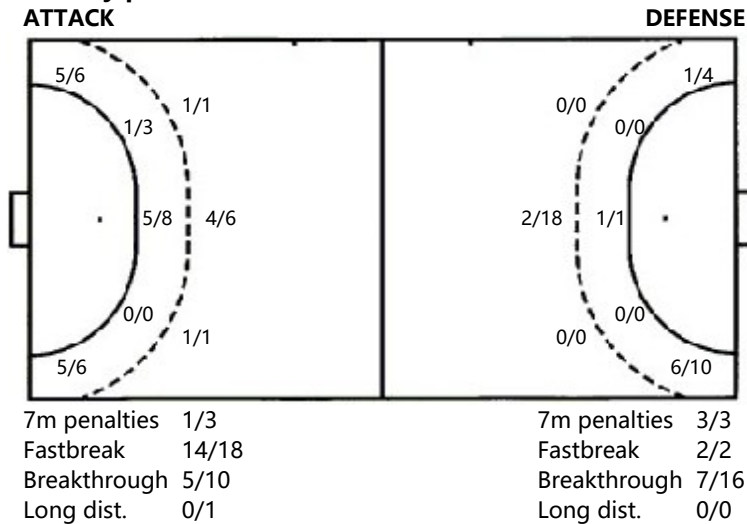
Shot distribution by player

2.唐悦	3.陈硕	5.张宇	6.姚香凝	7.王戈	8.李诗棋	9.韦娜娜
0/1			0/1	1/1		
2/2	1/3			1/1		1/1
1miss 1block			1post			
13.杨慧	15.周亚茹	19.董雪	26.杨丽丽	27.韦秋花	28.叶飞雪	29.韦宝桂
3/3	1/1	1/1			3/3	0/1
32.刘晓玉	33.马琳	.Total				1miss
	1/1	2/4	2/4	0/1	12/12	
		0/2	0/2		1/5	
	2/2	16/17	2/6	6/7		
	1miss	2post 3miss 1block				

Saves distribution goalkeepers

26.杨丽丽	32.刘晓玉	.Total
3/4		3/4
1/3		2/5
4/10	2/4	4/11
	2/3	2/4
	1/1	2/4
	0/1	0/5

Shots by position



Shooting statistics

Position	Goals	Save	Miss	Post	Blk	Total	%
Back (9m)	6	1			1	8	75
Line (6m)	6	4	1			11	55
Wing	7	1		1		9	78
7m penalties	1	1	1			3	33
Fastbreak	14	3		1		18	78
Breakthrough	5	4	1			10	50
Total	39	14	3	2	1	59	66

Jersey number Tot. Total shooting 6m 6m shooting 9m 9m shooting Wing Wing shooting Fst Fastbreak 7m 7m Throw
 Brk. Breakthrough LD Long distance shooting As. Assists E7 Earned 7m St. Steals 2m 2-minute suspension C7. Received 7m
 D Disqualification Dr Disqualification+Report FT Free Throw PC Pass clear chance OF Offensiven Foul TP Time played W warning

第十四届全运会女子手球资格赛暨2021年“体彩杯”全国女子手球冠军杯赛

万州
Preliminary

Match Team Statistics
Match NO.1

广东 46.0 - 23.0 四川
(22.5-10.0)(23.5-13.0)

2021-05-21 13:00
万州体育馆

Referees: 王羚(CHN) / 谷瑶(CHN)

四川

Players		Goals/shots										Attack				Defense			Penalties				TP	
#	Surname and name	Tot.	%	9m	6m	Wing	7m	Fst.	Brk.	FT	LD	As.	PC	E7	OF	St.	C7	Blk	W	2m	D	Dr		
1	冯颖慧																							18:03
3	张雨乐	1/5	20	0/1		1/4										1	1							00:00
6	顾天澍	7/14	50	1/5					6/9					1	7				1					00:00
10	李旗	6/13	46.15	0/2		5/8		1/1	0/1	0/1														00:00
11	梁圳萍	1/2	50	0/1				1/1																00:00
16	季实娟	1/1	100				1/1																	00:00
18	王慧	1/5	20	0/3			1/1		0/1					2	1		2	1						00:00
19	赵晔	5/17	29.41	1/6	1/1	1/2	1/1		1/5	0/2					3									00:00
22	魏子寒														1									06:10
26	黄晓莹																							05:41
	Total	22/57	38.6	2/18	1/1	7/14	3/3	2/2	7/16	0/3				3	13	3	2	1	1					00:29:54

Goalkeepers		Saves / shots										TP
#	Surname and name	Tot.	%	9m	6m	Wing	7m	Fst	Brk.	FT	LD	
1	冯颖慧	14/45	31.11	1/4	4/10	1/4	1/2	3/17	3/7		1/1	18:03
16	季实娟											00:00
22	魏子寒	1/5	20	0/2		0/2			1/1			06:10
26	黄晓莹	0/4		0/1		0/2			0/1			05:41
	Total	15/54	27.78	1/7	4/10	1/8	1/2	3/17	4/9		1/1	00:29:54

Jersey number **Tot.** Total shooting **6m** 6m shooting **9m** 9m shooting **Wing** Wing shooting **Fst** Fastbreak **7m** 7m Throw
Brk. Breakthrough **LD** Long distance shooting **As.** Assists **E7** Earned 7m **St.** Steals **2m** 2-minute suspension **C7.** Received 7m
D Disqualification **Dr** Disqualification+Report **FT** Free Throw **PC** Pass clear chance **OF** Offensiven Foul **TP** Time played **W** warning
Blk. Block

第十四届全运会女子手球资格赛暨2021年“体彩杯”全国女子手球冠军杯赛

万州
Preliminary

FTR
Match NO.1

广东 46.0 - 23.0 四川
(22.5-10.0)(23.5-13.0)

2021-05-21 13:00
万州体育馆

Referees: 王羚(CHN) / 谷瑶(CHN)

Shot distribution by player

1.冯颖慧

3.张雨乐

6.顾天澍

10.李旗

11.梁圳萍

16.季实娟

18.王慧

		0/1
	0/1	1/1

1/1		1/3
1/1		1/2
2/2		1/1

0/1		1/1
1/2		
2/4	2/2	

1/1		

1/1		

		0/2
		1/1

19.赵晔

2post
22.魏子寒

2post 2block
26.黄晓莹

1miss 2block
.Total

1miss

1post 1block

0/2		1/1
1/2		0/1
1/3	0/1	2/2

1/4		3/7
3/5		1/4
7/11	2/4	5/5

2post 2miss 1block

7post 4miss 6block

Saves distribution goalkeepers

1.冯颖慧

16.季实娟

22.魏子寒

26.黄晓莹

.Total

2/4	1/1	0/9
2/2		4/5
1/14	3/4	1/6

		0/2
0/1	1/1	0/1

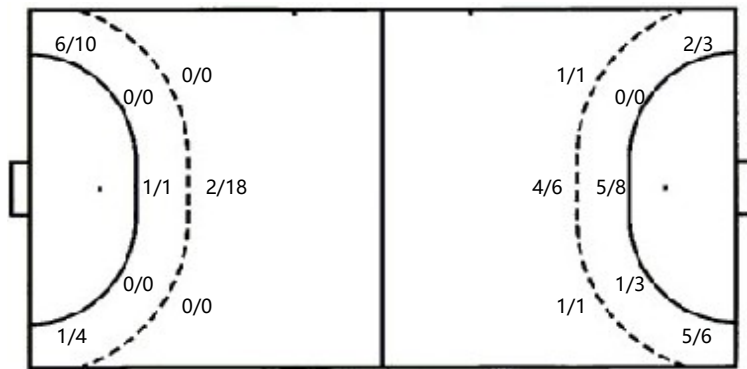
		0/1
0/2	0/1	

2/4	1/1	0/12
2/2		4/5
1/17	4/6	1/7

Shots by position

ATTACK

DEFENSE



7m penalties 3/3
Fastbreak 2/2
Breakthrough 7/16
Long dist. 0/0

7m penalties 1/3
Fastbreak 14/18
Breakthrough 5/10
Long dist. 0/1

Shooting statistics

Position	Goals	Save	Miss	Post	Blk	Total	%
Back (9m)	2	6	1	3	6	18	11
Line (6m)	1					1	100
Wing	7	5		2		14	50
7m penalties	3					3	100
Fastbreak	2					2	100
Breakthrough	7	7		2		16	44
Total	22	18	1	7	6	54	41

Jersey number Tot. Total shooting 6m 6m shooting 9m 9m shooting Wing Wing shooting Fst Fastbreak 7m 7m Throw
 Brk. Breakthrough LD Long distance shooting As. Assists E7 Earned 7m St. Steals 2m 2-minute suspension C7. Received 7m
 D Disqualification Dr Disqualification+Report FT Free Throw PC Pass clear chance OF Offensiven Foul TP Time played W warning
 Blk. Block