

# 全国女子锦标赛

重庆万州

Preliminary

Match Team Statistics

**广西队 17 - 58 江苏队**

2020-09-19 10:40

Match NO.8

(7.5 - 26.5)(9.5 - 31.5)

体育馆

Referees: (CHN) / (CHN)

## 广西队

Players		Goals/shots										Attack				Def.			Penalties				TP	
#	Surname and name	Tot.	%	9m	6m	Wing	7m	Fst.	Brk.	FT	LD	As.	PC	E7	OF	St.	C7	Blk	W	2m	D	Dr		
12	江燕红																							
9	蓝雪梅	6/22	27.27	2/14	2/5	1/1	0/1		1/1				1	2	5			1		2				
17	杨杨	1/7	14.29	1/7									1	6	1				1					
26	黄海玉	4/12	33.33	2/6	0/1	1/4			1/1				3	1	2		1			1				
20	岳欣华	0/3	0		0/2	0/1								3				1						
22	陈依依	2/13	15.38	2/9		0/4									2					1				
13	覃柳林	1/2	50			0/1		1/1							1									
6	覃沥莹																							
7	谭金凤																							
8	金莹																							
14	蒙倩																							
15	陈嘉贝																							
18	林杏																							

Goalkeepers		Saves / shots										
#	Surname and name	Tot.	%	9m	6m	Wing	7m	FB	Brk.	FT	LD	
12	江燕红	0/21	0		0/5	0/1	0/3	0/7	0/3	0/2		

Coach:

# Jersey number    Tot. Total shooting    6m 6m (line) shooting    9m 9m shooting    Wng. Wing shooting    FB Fastbreak sh.    7m 7m penalty sh.  
 Brk. Breakthrough sh.    LD Long distance sh.    As. Assists    E7 Earned 7m pen.    TF Technical faults    St. Steals    2m 2m punishments  
 C7. Committed 7m    YC. Yellow cards    Blk. Blocks

# 全国女子锦标赛

重庆万州

Preliminary

Match Team Statistics  
Match NO.8

**广西队 17 - 58 江苏队**  
(7.5 - 26.5)(9.5 - 31.5)

2020-09-19 10:40  
体育馆

Referees: (CHN) / (CHN)

## Shot distribution by player

26.黄海玉

17.杨杨

20.岳欣华

22.陈依依

13.覃柳林

9.蓝雪梅

12.江燕红

0/1		1/2
		0/1
2/2		1/1

1post 2miss 2block  
18.林杏

		0/1
1/2		

2miss 2block  
15.陈嘉贝

		0/1

1post 1miss  
8.金莹

		0/1
1/1		1/6

1post 3miss 1block  
14.蒙倩

		1/2

6.覃沥莹

		1/2
3/6	1/1	1/5

1post 4miss 3block  
7.谭金凤





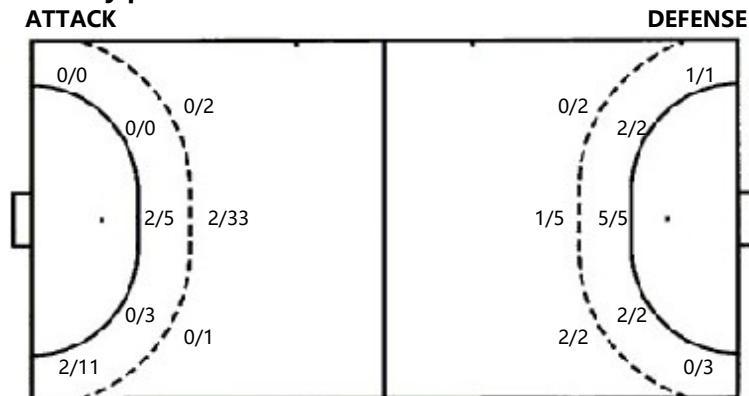



## Saves distribution goalkeepers

12.江燕红

0/1		0/4
0/2		1/3
3/10	0/1	0/4

## Shots by position



7m penalties 0/1  
Fastbreak 0/0  
Breakthrough 2/2  
Long dist. 0/0

7m penalties 4/7  
Fastbreak 0/0  
Breakthrough 4/5  
Long dist. 0/0

## Shooting statistics

Position	Goals	Sav.	Miss.	Post	Blk.	Total	%
Back (9m)	2	11	8	3	7	31	6.45
Line (6m)	2	2	2	1	1	8	25.00
Wing	2	7	2			11	18.18
7m penalties		1				1	0.00
Fastbreak							
Breakthrough	2					2	100.00
<b>Total</b>	<b>8</b>	<b>21</b>	<b>12</b>	<b>4</b>	<b>8</b>	<b>53</b>	<b>15.09</b>

# Jersey number    **Tot.** Total shooting    **6m** 6m (line) shooting    **9m** 9m shooting    **Wng.** Wing shooting    **FB** Fastbreak sh.    **7m** 7m penalty sh.  
**Brk.** Breakthrough sh.    **LD** Long distance sh.    **As.** Assists    **E7** Earned 7m pen.    **TF** Technical faults    **St.** Steals    **2m** 2m punishments  
**2m** 2m punishments    **C7.** Committed 7m    **YC.** Yellow cards    **Blk.** Blocks

# 全国女子锦标赛

重庆万州

Preliminary

Match Team Statistics

**广西队 17 - 58 江苏队**

2020-09-19 10:40

Match NO.8

(7.5 - 26.5)(9.5 - 31.5)

体育馆

Referees: (CHN) / (CHN)

## 江苏队

Players		Goals/shots										Attack				Def.			Penalties			TP	
#	Surname and name	Tot.	%	9m	6m	Wing	7m	Fst.	Brk.	FT	LD	As.	PC	E7	OF	St.	C7	Blk	W	2m	D		Dr
12	黄霞	0/18	0	0/18								1											
34	金梦青	6/10	60		1/1	0/1	1/1	2/2	1/2	1/3			1		2	2	2						
11	于源源	2/2	100			1/1		1/1															
31	王铃娜	2/2	100					2/2								1							
9	莫蒙萌	2/4	50	0/1	2/2					0/1		1			1	1	1						
69	蓝小玲	4/7	57.14	0/2	1/1			2/2	1/1	0/1		2				1		3					
6	凤洋	4/5	80				1/1	3/4									1						
10	王可可	3/5	60	0/2			1/1		1/1	1/1		2					2						
32	孙姣	3/4	75	0/1	1/1	1/1		1/1								1	1	1					
15	焉妍	0/1	0				0/1							1									
18	戴小宇	4/6	66.67	0/1	1/1		0/1	3/3									2	1					
5	庄红艳	4/5	80		2/2			2/3				1			1								
1	王丹	4/5	80		1/1	0/1	1/1	1/1	1/1			1			2								
3	张海侠	2/2	100				1/1	1/1															

Goalkeepers		Saves / shots										
#	Surname and name	Tot.	%	9m	6m	Wing	7m	FB	Brk.	FT	LD	
12	黄霞											

Coach:

# Jersey number    Tot. Total shooting    6m 6m (line) shooting    9m 9m shooting    Wng. Wing shooting    FB Fastbreak sh.    7m 7m penalty sh.  
 Brk. Breakthrough sh.    LD Long distance sh.    As. Assists    E7 Earned 7m pen.    TF Technical faults    St. Steals    2m 2m punishments  
 2m 2m punishments    C7. Committed 7m    YC. Yellow cards    Blk. Blocks

# 全国女子锦标赛

重庆万州

Preliminary

Match Team Statistics  
Match NO.8

广西队 17 - 58 江苏队  
(7.5 - 26.5)(9.5 - 31.5)

2020-09-19 10:40  
体育馆

Referees: (CHN) / (CHN)

## Shot distribution by player

3.张海侠

6.凤洋

9.莫蒙蒙

10.王可可

18.戴小宇

1.王丹

32.孙姣

2/2		

3/4		1/1

		1/1
		1/1

		1/1
1/1		1/1
2/2		

2/2		
1/1		
1/3		

1/1		4/4

2/2		
		1/1

11.于源源

34.金梦青

1miss  
69.蓝小玲

12.黄霞

31.王铃娜

1post  
5.庄红艳

15.焉妍

1/1		1/1

		4/4
1/2	1/1	1/1

1/1		
1/1		1/2
1/1		1/1


		1/1
1/1		

1/1	0/1	
1/1		3/3


1post 1miss 1block

1miss 1block

1post

## Saves distribution goalkeepers

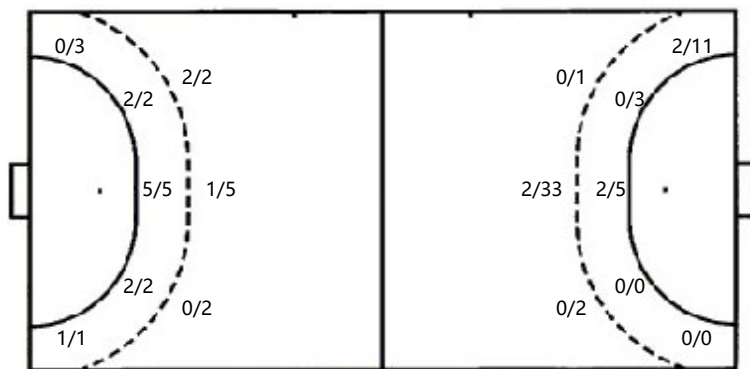
12.黄霞

1/1		1/2
		4/5
4/11	0/1	11/15

## Shots by position

ATTACK

DEFENSE



7m penalties 4/7  
Fastbreak 0/0  
Breakthrough 4/5  
Long dist. 0/0

7m penalties 0/1  
Fastbreak 0/0  
Breakthrough 2/2  
Long dist. 0/0

## Shooting statistics

Position	Goals	Sav.	Miss.	Post	Blk.	Total	%
Back (9m)	3	2	1			6	50.00
Line (6m)	9					9	100.00
Wing	1		1	1		3	33.33
7m penalties	4	1		1		6	66.67
Fastbreak							
Breakthrough	4	1				5	80.00
<b>Total</b>	<b>21</b>	<b>4</b>	<b>2</b>	<b>2</b>		<b>29</b>	<b>72.41</b>

# Jersey number Tot. Total shooting 6m 6m (line) shooting 9m 9m shooting Wng. Wing shooting FB Fastbreak sh. 7m 7m penalty sh.  
Brk. Breakthrough sh. LD Long distance sh. As. Assists E7 Earned 7m pen. TF Technical faults St. Steals 2m 2m punishments  
2m 2m punishments C7. Committed 7m YC. Yellow cards Blk. Blocks