

全国女子锦标赛

重庆万州

Mainround

Match Team Statistics

安徽队 38.5 - 28.5 广东队

2020-09-24 14:40

Match NO.36

(17.5 - 14.0)(21.0 - 14.5)

体育馆

Referees: 程钰峰(CHN) / 周云磊(CHN)

安徽队

Players		Goals/shots										Attack				Def.			Penalties				TP	
#	Surname and name	Tot.	%	9m	6m	Wing	7m	Fst.	Brk.	FT	LD	As.	PC	E7	OF	St.	C7	Blk	W	2m	Dr	D		
3	孙明月																							00:00
8	徐仕媛																							00:00
10	袁玉	7/8	87.5		1/1	3/3	1/1	1/2	1/1						3	1								00:00
11	李晓晴	3/3	100					1/1	1/1	1/1		1			2		2							00:00
13	何雅莉														1									00:00
15	李窈窕																							00:00
17	周婷	1/3	33.33	0/1	0/1				1/1						4		1							00:00
18	蔡雪洁	6/9	66.67	1/1	0/1	0/2		1/1	4/4						3									00:00
19	王选																							00:00
27	张慧													1							1			00:00
33	周梦雪	5/6	83.33			2/3		2/2	1/1					1	1									00:00
41	杜机娟																							00:00
52	丁丽洁																							00:00
93	张婷婷	8/9	88.89		3/3	1/1	2/2	2/2	0/1			3		2	1	3	1				1			00:00
96	张文慧	3/3	100		2/2			1/1							2									00:00
	Total	33/41	80.49	1/2	6/8	6/9	3/3	8/9	8/9	1/1		4		4	17	4	2	2			2			

Goalkeepers		Saves / shots											TP
#	Surname and name	Tot.	%	9m	6m	Wing	7m	FB	Brk.	FT	LD		
8	徐仕媛	0/7			0/3	0/2	0/1		0/1			00:00	
19	王选	0/21			0/2	0/7	0/3	0/5	0/3		0/1	13:51	
	Total	9/34		0/2	0/5	2/12	0/4	4/5	2/4	0/1	1/1		

Jersey number Tot. Total shooting 6m 6m (line) shooting 9m 9m shooting Wng. Wing shooting FB Fastbreak sh. 7m 7m penalty sh.
 Brk. Breakthrough sh. LD Long distance sh. As. Assists E7 Earned 7m pen. TF Technical faults St. Steals 2m 2m punishments
 C7. Committed 7m YC. Yellow cards Blk. Blocks

全国女子锦标赛

重庆万州

Mainround

Match Team Statistics
Match NO.36

安徽队 38.5 - 28.5 广东队
(17.5 - 14.0)(21.0 - 14.5)

2020-09-24 14:40
体育馆

Referees: 程钰峰(CHN) / 周云磊(CHN)

Shot distribution by player

3. 孙明月

8. 徐仕媛

10. 袁玉

11. 李晓晴

13. 何雅莉

15. 李窈窈

17. 周婷

2/2	1/1	1/1
2/3		1/1

1/1		
1/1		1/1

0/1		
1/2		

18. 蔡雪洁

19. 王选

27. 张慧

33. 周梦雪

41. 杜机娟

52. 丁丽洁

93. 张婷婷

0/1		2/2
1/1		3/3

2/2		1/2
		2/2

1/1		1/1
2/2		1/1
2/2		1/1

1post 1miss
96. 张文慧

.Total

1post

		3/3

6/6	1/1	3/4
2/4		3/3
7/9		11/11

2post 1miss

Saves distribution goalkeepers

8. 徐仕媛

19. 王选

.Total

0/1		0/3
2/2		0/1
0/2		2/3

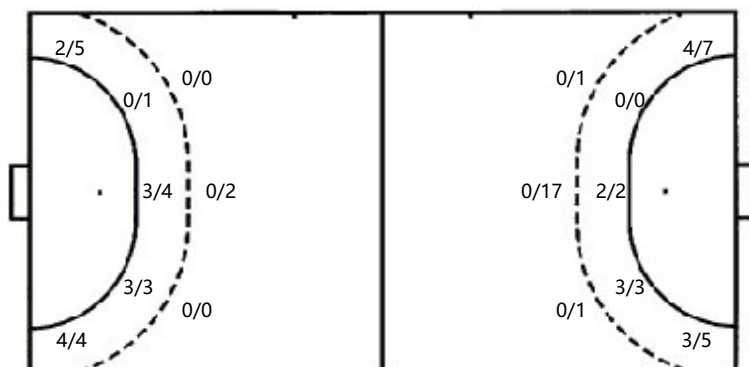
1/3	0/1	
2/3		1/4
6/12		0/4

1/4	0/1	0/3
4/5		1/5
6/14		2/7

Shots by position

ATTACK

DEFENSE



7m penalties 2/3
Fastbreak 0/9
Breakthrough 8/9
Long dist. 0/0

7m penalties 4/4
Fastbreak 0/5
Breakthrough 2/4
Long dist. 0/1

Shooting statistics

Position	Goals	Sav.	Miss.	Post	Blk.	Total	%
Back (9m)		1				1	0.00
Line (6m)	6	1	1			8	75.00
Wing	6	2		1		9	66.67
7m penalties	2					2	100.00
Fastbreak							
Breakthrough	8			1		9	88.89
Total	22	4	1	2		29	75.86

Jersey number Tot. Total shooting 6m 6m (line) shooting 9m 9m shooting Wng. Wing shooting FB Fastbreak sh. 7m 7m penalty sh.
 Brk. Breakthrough sh. LD Long distance sh. As. Assists E7 Earned 7m pen. TF Technical faults St. Steals 2m 2m punishments
 2m 2m punishments C7. Committed 7m YC. Yellow cards Blk. Blocks

全国女子锦标赛

重庆万州

Mainround

Match Team Statistics

安徽队 38.5 - 28.5 广东队

2020-09-24 14:40

Match NO.36

(17.5 - 14.0)(21.0 - 14.5)

体育馆

Referees: 程钰峰(CHN) / 周云磊(CHN)

广东队

Players		Goals/shots										Attack				Def.			Penalties			TP		
#	Surname and name	Tot.	%	9m	6m	Wing	7m	Fst.	Brk.	FT	LD	As.	PC	E7	OF	St.	C7	Blk	W	2m	Dr		D	
2	唐悦	4/4	100				4/4																	23:53
3	陈硕	0/1				0/1																		01:24
4	韦秋花																							
5	张宇	2/4	50			2/3		0/1							2		1							00:00
6	唐盼盼																							
7	王戈	3/4	75			3/3		0/1							1									11:32
8	李诗棋	1/2	50						1/2			1	1		3	2	3							00:00
9	韦娜娜	3/3	100		1/1	1/1			1/1			1	1	1	4									00:00
13	杨慧	2/5	40			1/3		1/1	0/1						3	1								00:00
15	周亚茹														1									06:12
16	叶飞雪																							
19	董雪	1/1	100		1/1																1			18:31
21	刘诗彤	2/5	40		2/2	0/1		0/2							1									00:00
22	范春燕																							02:11
26	杨丽丽	0/3		0/2							0/1													00:00
33	马琳	1/2	50		1/1					0/1														00:00
	Total	19/34	57.58	0/2	5/5	7/12	4/4	1/5	2/4	0/1	0/1	1	2	2	14	3	4				1			

Goalkeepers		Saves / shots											TP
#	Surname and name	Tot.	%	9m	6m	Wing	7m	FB	Brk.	FT	LD		
22	范春燕	0/12			0/3	0/2	0/2	0/2	0/2	0/1		02:11	
26	杨丽丽	0/26		0/2	0/4	0/6	0/1	0/7	0/6			00:00	
	Total												

#	Jersey number	Tot.	Total shooting	6m	6m (line) shooting	9m	9m shooting	Wng	Wing shooting	Fst.	Fastbreak	7m	7m Throw
Brk.	Breakthrough sh.	LD	Long distance	As.	Assists	E7	Eearned 7m	TF	Technical faults	St.	Steals	2m	2m punishments
2m	2m punishments	C7.	Received 7m	YC.	Yellow cards	Blk.	Blocks	OF	Offensive Foul	TP	Time played	W	warning
D	Disqualification	Dr	Disqualification Report	FT	Free Throw	PC	Passclear(Assists without god)						

全国女子锦标赛

重庆万州

Mainround

FTR
Match NO.36

安徽队 38.5 - 28.5 广东队
(17.5 - 14.0)(21.0 - 14.5)

2020-09-24 14:40
体育馆

Referees: 程钰峰(CHN) / 周云磊(CHN)

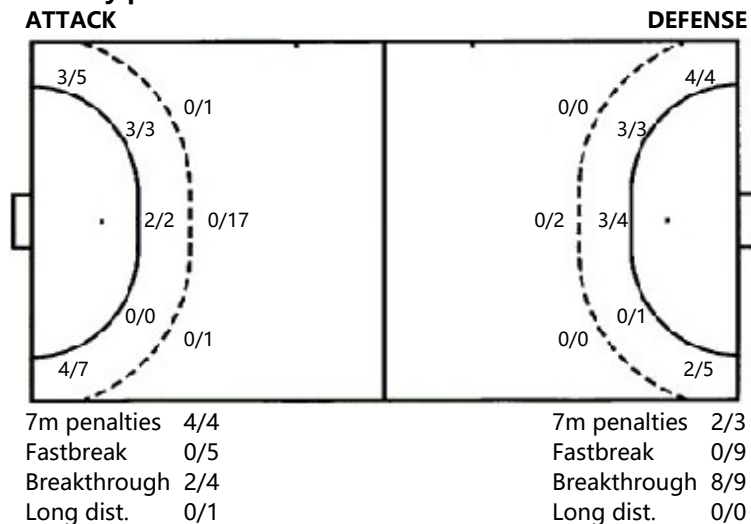
Shot distribution by player

2.唐悦	3.陈硕	4.韦秋花	5.张宇	6.唐盼盼	7.王戈	8.李诗棋
1/1 2/2 1/1	1/1 1/1		0/1 1/2 1/1		1/1 1/1 1/2	0/2 1/1
9.韦娜娜	13.杨慧	15.周亚茹	16.叶飞雪	19.董雪	21.刘诗彤	22.范春燕
1miss 1block 2/3 1/1	1post 2miss 2/4 1/2				0/1 1/1 1/1	
26.杨丽丽	33.马琳	.Total			1post	
0/1	2/2 0/1 0/1	3/4 1/1 3/3 1/5 4/5 8/14 5/7				
	3miss 1block	2post 8miss 2block				

Saves distribution goalkeepers

22.范春燕	26.杨丽丽	.Total
0/2 0/2 1/1	0/4 2/4 1/8	0/6 2/4 2/9
0/2 0/5	0/1 0/1 0/6	0/1 1/4 0/3 0/11

Shots by position



Shooting statistics

Position	Goals	Sav.	Miss.	Post	Blk.	Total	%
Back (9m)		5	6		2	13	0.00
Line (6m)	5					5	100.00
Wing	7	2	1	2		12	58.33
7m penalties	4					4	100.00
Fastbreak							
Breakthrough	2	2				4	50.00
Total	18	9	7	2	2	38	47.37

Jersey number Tot. Total shooting 6m 6m (line) shooting 9m 9m shooting Wng. Wing shooting FB Fastbreak sh. 7m 7m penalty sh.
Brk. Breakthrough sh. LD Long distance sh. As. Assists E7 Earned 7m pen. TF Technical faults St. Steals 2m 2m punishments
2m 2m punishments C7. Committed 7m YC. Yellow cards Blk. Blocks