

全国女子锦标赛

重庆万州

Preliminary

Match Team Statistics

上海队 43.5 - 26 北京队

2020-09-23 09:00

Match NO.27

(22.0 - 15.0)(21.5 - 11.0)

体育馆

Referees: 李加伟(CHN) / 王禹澎(CHN)

上海队

Players		Goals/shots										Attack				Def.			Penalties				TP
#	Surname and name	Tot.	%	9m	6m	Wing	7m	Fst.	Brk.	FT	LD	As.	PC	E7	OF	St.	C7	Blk	W	2m	Dr	D	
2	周蕾	2/2	100					1/1	1/1									1					05:05
3	江馨彤	4/4	100		1/1			3/3				1						1					00:31
5	王嘉怡	1/3	33.33	0/1	1/1			0/1				1				1		1					00:31
6	黄妍	0/1	0						0/1						1					1			21:25
8	张萍萍	2/2	100		1/1			1/1				1			1			2					00:31
9	武娜娜																						
10	包纪仪	4/7	57.14			3/4		1/2	0/1			1		1									00:32
11	孙梦颖	2/3	66.67		0/1		1/1	1/1				1				1							01:53
12	郑冯																						15:18
13	徐娟	3/4	75		1/2			2/2						1	2								18:29
17	杨崧	9/17	52.94	2/4	2/4		1/1	2/4	2/4			2	1		2	1		1					00:36
18	沙正文	4/5	80		2/3			2/2				2		1		2				1			20:01
20	郑雅楠																						24:56
21	张嘉悦	0/1	0		0/1										1								00:34
22	胡晓莹											1			1								00:00
28	杨奚琦	3/6	50	1/4	1/1			1/1					1	1	2								00:37
	Total	34/55	61.82	3/9	8/14	4/5	2/2	14/18	3/7			10	2	4	10	5	2	4		2			

Goalkeepers		Saves / shots										TP
#	Surname and name	Tot.	%	9m	6m	Wing	7m	FB	Brk.	FT	LD	
12	郑冯	0/3			0/1	0/1	0/1					15:18
22	胡晓莹	0/23			0/10	0/4	0/3	0/2	0/2	0/2		00:00
	Total	8/39		0/9	3/12	2/5	1/4	0/3	0/3	2/3		

Jersey number Tot. Total shooting 6m 6m (line) shooting 9m 9m shooting Wng. Wing shooting FB Fastbreak sh. 7m 7m penalty sh.
 Brk. Breakthrough sh. LD Long distance sh. As. Assists E7 Earned 7m pen. TF Technical faults St. Steals 2m 2m punishments
 C7. Committed 7m YC. Yellow cards Blk. Blocks

全国女子锦标赛

重庆万州

Preliminary

Match Team Statistics
Match NO.27

上海队 43.5 - 26 北京队
(22.0 - 15.0)(21.5 - 11.0)

2020-09-23 09:00
体育馆

Referees: 李加伟(CHN) / 王禹澎(CHN)

Shot distribution by player

2.周蕾	3.江馨彤	5.王嘉怡	6.黄妍	8.张萍萍	9.武娜娜	10.包纪仪
2/2	1/1 1/1	0/1 1/2	0/1	1/1 1/1		1/1 0/2 3/3 0/1

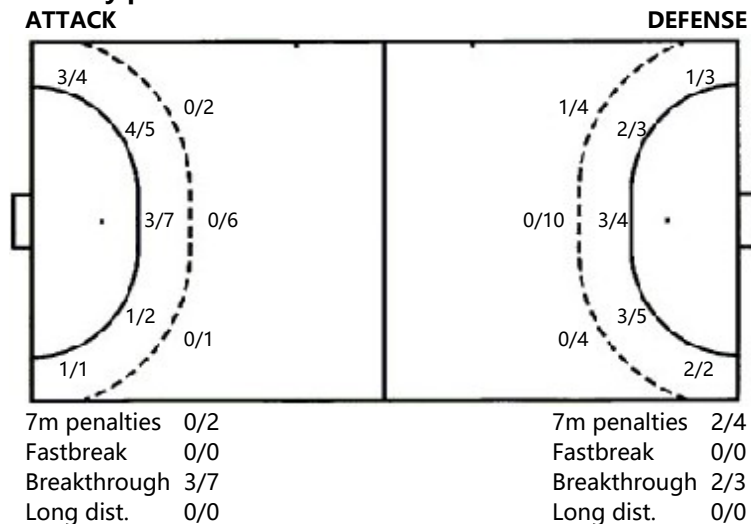
11.孙梦颖	12.郑冯	13.徐娟	17.杨崑	18.沙正文	20.郑雅楠	21.张嘉悦
1/1 1/1		1/1 1/2 1/1	2/2 1/1 0/2	0/1 4/4		0/1

1block 22.胡晓莹	28.杨奚琦	.Total	1post 1block
	1/1 1/1	6/6 0/1 2/2 0/2 0/1 7/9 14/21 1/1 4/6	
	2post 1miss	3post 1miss 2block	

Saves distribution goalkeepers

12.郑冯	22.胡晓莹	.Total
0/1 1/1 0/1	1/6 1/1 1/3 2/3 1/1 5/8 0/5 2/7	1/7 1/1 1/3 2/3 1/1 6/9 0/5 2/8

Shots by position



Shooting statistics

Position	Goals	Sav.	Miss.	Post	Blk.	Total	%
Back (9m)		1	1	3	1	6	0.00
Line (6m)	8	5			1	14	57.14
Wing	4	1				5	80.00
7m penalties							
Fastbreak							
Breakthrough	3	4				7	42.86
Total	15	11	1	3	2	32	46.88

Jersey number **Tot.** Total shooting **6m** 6m (line) shooting **9m** 9m shooting **Wng.** Wing shooting **FB** Fastbreak sh. **7m** 7m penalty sh.
Brk. Breakthrough sh. **LD** Long distance sh. **As.** Assists **E7** Earned 7m pen. **TF** Technical faults **St.** Steals **2m** 2m punishments
2m 2m punishments **C7.** Committed 7m **YC.** Yellow cards **Blk.** Blocks

全国女子锦标赛

重庆万州

Preliminary

Match Team Statistics

上海队 43.5 - 26 北京队

2020-09-23 09:00

Match NO.27

(22.0 - 15.0)(21.5 - 11.0)

体育馆

Referees: 李加伟(CHN) / 王禹澎(CHN)

北京队

Players		Goals/shots										Attack				Def.			Penalties				TP	
#	Surname and name	Tot.	%	9m	6m	Wing	7m	Fst.	Brk.	FT	LD	As.	PC	E7	OF	St.	C7	Blk	W	2m	Dr	D		
5	徐慧敏	0/1						0/1						1	2	1								15:28
6	侯鑫淼	2/4	50		1/1	1/3							1		1		1	1						00:17
9	宋建军	1/3	33.33	0/1	0/1		1/1					1		1	2			1						00:20
10	陈丽婷	1/5	20	0/2	0/1				1/2						1									00:18
11	王腾爽	2/3	66.67		2/2					0/1					2									17:16
13	杨政赢	4/7	57.14	0/2	1/1	1/1		1/1	1/1	0/1					2		1							00:22
14	侯美林	1/1	100				1/1								1									17:38
18	王木子																							20:48
20	田媛	0/1					0/1										1							12:10
21	郝泽荣	5/7	71.43		3/5		1/1	1/1							1	1								00:23
24	李华																1							18:05
25	田俊	0/1								0/1		1			2									09:05
26	刘思琦																							
27	曹芳鸣	2/2	100		1/1	1/1						1												00:24
63	王雨晗																							
Total		18/39	46.15	0/9	8/12	3/5	3/4	2/3	2/3	0/3		3	1	2	14	2	4	2						

Goalkeepers		Saves / shots											TP
#	Surname and name	Tot.	%	9m	6m	Wing	7m	FB	Brk.	FT	LD		
26	刘思琦												
63	王雨晗												
Total													

#	Jersey number	Tot.	Total shooting	6m	6m (line) shooting	9m	9m shooting	Wng	Wing shooting	Fst.	Fastbreak	7m	7m Throw
Brk.	Breakthrough sh.	LD	Long distance	As.	Assists	E7	Earned 7m	TF	Technical faults	St.	Steals	2m	2m punishments
2m	2m punishments	C7.	Received 7m	YC.	Yellow cards	Blk.	Blocks	OF	Offensive Foul	TP	Time played	W	warning
D	Disqualification	Dr	Disqualification Report	FT	Free Throw	PC	Passclear(Assists without god)						

全国女子锦标赛

重庆万州

Preliminary

FTR
Match NO.27

上海队 43.5 - 26 北京队
(22.0 - 15.0)(21.5 - 11.0)

2020-09-23 09:00
体育馆

Referees: 李加伟(CHN) / 王禹澎(CHN)

Shot distribution by player

5.徐慧敏

6.侯鑫淼

9.宋建军

10.陈丽婷

11.王腾爽

13.杨政赢

14.侯美林

2/3		
		0/1

1/1		0/1
		0/1
		1/1

1/1	0/1	
	0/1	0/2
1/1		1/2

1/1		
		1/1

		1/1
1/2		0/1
2/2		2/2

		1/1

1post
18.王木子

20.田媛

1post 1miss
21.郝泽荣

1post 1block
24.李华

1miss 1block
25.田俊

1miss 2block
26.刘思琦

27.曹芳鸣

		0/1

1/1		1/1
		0/1
1/1		2/2

0/1		

		1/1
1/1		

63.王雨晗

.UKUPNO

1post

6/7	0/1	2/3
1/3	0/1	3/9
5/5		6/8

4post 3miss 4block

Saves distribution goalkeepers

26.刘思琦

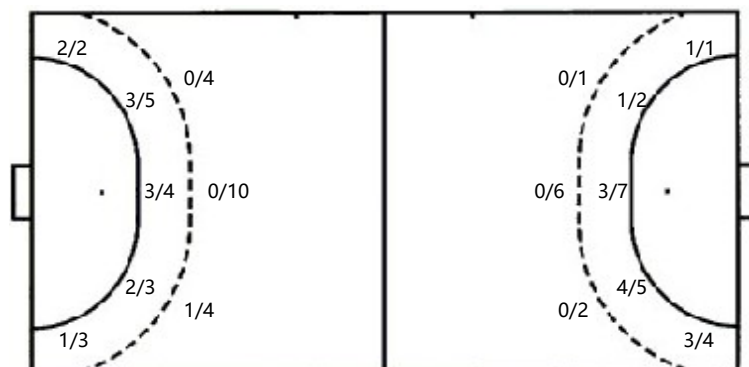
63.王雨晗

.UKUPNO

Shots by position

ATTACK

DEFENSE



7m penalties 2/4
Fastbreak 0/0
Breakthrough 2/3
Long dist. 0/0

7m penalties 0/2
Fastbreak 0/0
Breakthrough 3/7
Long dist. 0/0

Shooting statistics

Position	Goals	Sav.	Miss.	Post	Blk.	Total	%
Back (9m)	1	6	2	1	4	14	7.14
Line (6m)	8	3		1		12	66.67
Wing	3	2				5	60.00
7m penalties	2	1				3	66.67
Fastbreak							
Breakthrough	2			1		3	66.67
Total	16	12	2	3	4	37	43.24

Jersey number Tot. Total shooting 6m 6m (line) shooting 9m 9m shooting Wng. Wing shooting FB Fastbreak sh. 7m 7m penalty sh.
Brk. Breakthrough sh. LD Long distance sh. As. Assists E7 Earned 7m pen. TF Technical faults St. Steals 2m 2m punishments
2m 2m punishments C7. Committed 7m YC. Yellow cards Blk. Blocks