

全国女子锦标赛

重庆万州

Preliminary

Match Team Statistics

上海队 32.5 - 36.5 江苏队

2020-09-22 14:40

Match NO.24

(14.5 - 22.5)(18.0 - 14.0)

体育馆

Referees: (CHN) / (CHN)

上海队

Players		Goals/shots										Attack				Def.			Penalties				TP	
#	Surname and name	Tot.	%	9m	6m	Wing	7m	Fst.	Brk.	FT	LD	As.	PC	E7	OF	St.	C7	Blk	W	2m	D	Dr		
11	孙梦颖	7/16	43.75	1/4	1/3	0/1	3/3	2/2		0/3		1	1	1	1	1	1				1			
5	王嘉怡	5/11	45.45	2/5	1/1		0/1	2/3	0/1			4	1	2	2	1	1	1			1			
9	武娜娜	2/2	100					2/2							1		1							
2	周蕾	3/9	33.33		0/3	1/4		1/1	1/1					1		1	1	1						
12	郑冯											1												
13	徐娟	2/2	100		2/2									1	1		1			1				
3	江馨彤	1/3	33.33	0/1	1/1				0/1			1			1	1								
28	杨奚琦	1/10	10	1/6		0/3	0/1																	
6	黄妍	2/5	40	0/1				2/3		0/1						1								
17	杨崧	0/2	0		0/1	0/1																		
18	沙正文	1/3	33.33		1/3																			
22	胡晓莹																							
10	包纪仪															2								
8	张萍萍	1/1	100					1/1																

Goalkeepers		Saves / shots										
#	Surname and name	Tot.	%	9m	6m	Wing	7m	FB	Brk.	FT	LD	
12	郑冯	0/34	0		0/6	0/1	0/2	0/13	0/9	0/3		
22	胡晓莹	0/4	0				0/2	0/1	0/1			

Coach:

Jersey number Tot. Total shooting 6m 6m (line) shooting 9m 9m shooting Wng. Wing shooting FB Fastbreak sh. 7m 7m penalty sh.
 Brk. Breakthrough sh. LD Long distance sh. As. Assists E7 Earned 7m pen. TF Technical faults St. Steals 2m 2m punishments
 C7. Committed 7m YC. Yellow cards Blk. Blocks

全国女子锦标赛

重庆万州

Preliminary

Match Team Statistics

上海队 32.5 - 36.5 江苏队

2020-09-22 14:40

Match NO.24

(14.5 - 22.5)(18.0 - 14.0)

体育馆

Referees: (CHN) / (CHN)

Shot distribution by player

2.周蕾 3.江馨彤 5.王嘉怡 6.黄妍 8.张萍萍 9.武娜娜 10.包纪仪

0/1	0/1										
2/2		1/1									
0/1	0/1										

2miss 1post 1block 1block 1post 18.沙正文 20.郑雅楠 21.张嘉悦

1/2	1/1	0/1									
1/1		1/2						0/1			
2/4	0/1	1/1						0/1			

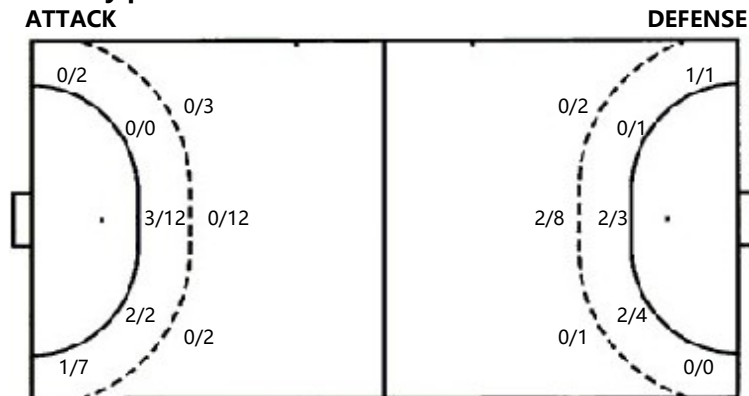
3block 1miss 1post

Saves distribution goalkeepers

12.郑冯 22.胡晓莹

0/3	0/1	2/3			0/1
1/2	1/1	2/5			
3/11	1/1	6/14	0/3		0/1

Shots by position



7m penalties	1/5	7m penalties	1/4
Fastbreak	0/0	Fastbreak	0/0
Breakthrough	1/3	Breakthrough	8/10
Long dist.	0/0	Long dist.	0/0

Shooting statistics

Position	Goals	Sav.	Miss.	Post	Blk.	Total	%
Back (9m)		9			4	13	0.00
Line (6m)	5	5	1	1	1	13	38.46
Wing	1	6	2			9	11.11
7m penalties	1	2				3	33.33
Fastbreak							
Breakthrough	1	1		1		3	33.33
Total	8	23	3	2	5	41	19.51

Jersey number Tot. Total shooting 6m 6m (line) shooting 9m 9m shooting Wng. Wing shooting FB Fastbreak sh. 7m 7m penalty sh.
 Brk. Breakthrough sh. LD Long distance sh. As. Assists E7 Earned 7m pen. TF Technical faults St. Steals 2m 2m punishments
 2m 2m punishments C7. Committed 7m YC. Yellow cards Blk. Blocks

全国女子锦标赛

重庆万州

Preliminary

Match Team Statistics

Match NO.24

上海队 32.5 - 36.5 江苏队

(14.5 - 22.5)(18.0 - 14.0)

2020-09-22 14:40

体育馆

Referees: (CHN) / (CHN)

江苏队

Players		Goals/shots										Attack				Def.			Penalties			TP	
#	Surname and name	Tot.	%	9m	6m	Wing	7m	Fst.	Brk.	FT	LD	As.	PC	E7	OF	St.	C7	Blk	W	2m	D		Dr
1	王丹	5/5	100		1/1		3/3		1/1					1	2								
69	蓝小玲	8/10	80	0/2				3/3	4/4	1/1			1		4		2	3					
3	张海侠	1/1	100					1/1							1		1						
9	莫蒙萌															1							
12	黄霞	0/13	0	0/13											1								
34	金梦青	4/13	30.77		0/2		0/1	3/6	1/3	0/1					8								
11	于源源	3/5	60	0/1	2/3			1/1						1				1					
32	孙姣	1/5	20	0/1	0/1			1/3						2				2		1			
18	戴小宇	1/1	100					1/1							3								
6	凤洋	1/1	100			1/1																	
5	庄红艳	3/3	100		1/1				2/2					1	2		1						
23	MWASESA Cristiane																					1	
10	王可可	0/1	0							0/1													1

Goalkeepers		Saves / shots										
#	Surname and name	Tot.	%	9m	6m	Wing	7m	FB	Brk.	FT	LD	
12	黄霞											

Coach:

Jersey number Tot. Total shooting 6m 6m (line) shooting 9m 9m shooting Wng. Wing shooting FB Fastbreak sh. 7m 7m penalty sh.
 Brk. Breakthrough sh. LD Long distance sh. As. Assists E7 Earned 7m pen. TF Technical faults St. Steals 2m 2m punishments
 2m 2m punishments C7. Committed 7m YC. Yellow cards Blk. Blocks

全国女子锦标赛

重庆万州

Preliminary

Match Team Statistics
Match NO.24

上海队 32.5 - 36.5 江苏队
(14.5 - 22.5)(18.0 - 14.0)

2020-09-22 14:40
体育馆

Referees: (CHN) / (CHN)

Shot distribution by player

3.张海侠

6.凤洋

9.莫蒙萌

10.王可可

18.戴小宇

1.王丹

32.孙皎

1/1		

		1/1

		0/1

1/1		

		1/1
3/3		1/1

		0/1
		0/1
		1/2

11.于源源

34.金梦青

69.蓝小玲

12.黄霞

31.王铃娜

5.庄红艳

	1/1	
0/1		2/2

1/1		1/1
0/1	0/1	1/2
0/1	0/1	2/4

1/1		
8/8		1/3

		1/1
		1/1
0/1		1/2

1post

1post 1miss 2block

1miss

Saves distribution goalkeepers

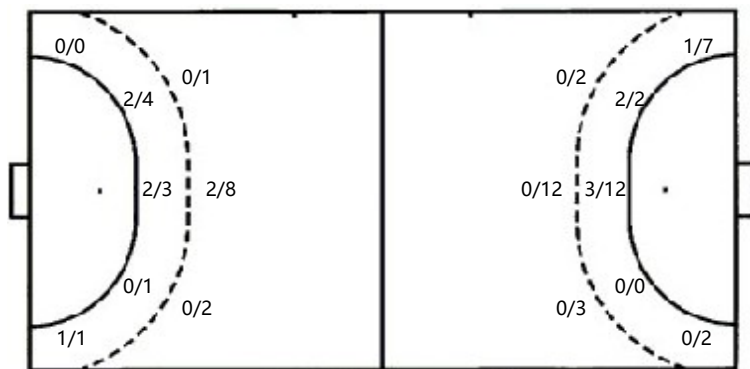
12.黄霞

4/6	1/2	2/4
1/4	2/2	6/9
6/14	4/6	1/5

Shots by position

ATTACK

DEFENSE



7m penalties 1/4

Fastbreak 0/0

Breakthrough 8/10

Long dist. 0/0

7m penalties 1/5

Fastbreak 0/0

Breakthrough 1/3

Long dist. 0/0

Shooting statistics

Position	Goals	Sav.	Miss.	Post	Blk.	Total	%
Back (9m)	2	5	2		1	10	20.00
Line (6m)	4	2		1	1	8	50.00
Wing	1					1	100.00
7m penalties	1	1				2	50.00
Fastbreak							
Breakthrough	8	2				10	80.00
Total	16	10	2	1	2	31	51.61

Jersey number Tot. Total shooting 6m 6m (line) shooting 9m 9m shooting Wng. Wing shooting FB Fastbreak sh. 7m 7m penalty sh.
 Brk. Breakthrough sh. LD Long distance sh. As. Assists E7 Earned 7m pen. TF Technical faults St. Steals 2m 2m punishments
 2m 2m punishments C7. Committed 7m YC. Yellow cards Blk. Blocks